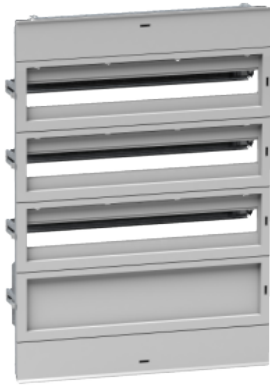


Product datasheet

Specifications



Modular distribution chassis 84 modules for NSYPLM86, NSYS3D86, NSYCRN86, NSYDLA84G

Local distributor code: 403418710 NSYDLA84G

Main

Range	Spacial
Accessory / separate part category	Mounting accessory
Application	Modular distribution application Multi-purpose
Product or component type	Chassis
Device short name	DLA
For enclosure nominal dimensions	-
Mounting location	Front of enclosure
Range compatibility	Spacial S3D Spacial CRN Spacial S3X Thalassa PLM
Device composition	1 chassis structure 2 finish cover 1 neutral/earth strip 2 x 16 mm ² 5 x 6 mm ² 3 front panels with 35 mm DIN rail 1 plain front panel with mounting plate
Quantity per set	Set of 1

Complementary

Material	Front panel: self-extinguishing insulating Chassis structure and rails: steel
Colour	Front panel: grey (RAL 7035)
Fixing mode	By fixing element - on front with supports location
Adjustment	In height from 40 to 85 mm for DIN rail
Number of horizontal rows	4
Total number of 18 mm modules	84
Type of front plate	Plain and cut-out plates
Number of cut-out	3 cut-outs
Height	780 mm
Width	560 mm

Packing Units

Unit Type of Package 1	PCE
Number of Units in Package 1	1
Package 1 Weight	8.73 kg
Package 1 Height	15 cm
Package 1 width	57 cm
Package 1 Length	78 cm
Unit Type of Package 2	P12
Number of Units in Package 2	10
Package 2 Weight	96.3 kg
Package 2 Height	83 cm
Package 2 width	80 cm
Package 2 Length	120 cm

Offer Sustainability

REACH Regulation	REACH Declaration
REACH free of SVHC	Yes
EU RoHS Directive	Pro-active compliance (Product out of EU RoHS legal scope) EU RoHS Declaration
Mercury free	Yes
RoHS exemption information	Yes
China RoHS Regulation	China RoHS declaration Product out of China RoHS scope. Substance declaration for your information

Contractual warranty

Warranty	18 months
----------	-----------