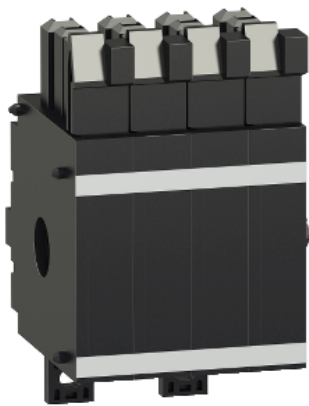


Product datasheet

Specifications



ON/OFF indication contact block 4 OF - 6 A/240 V AC - for MTZ2/MTZ3 drawout

LV848468

Main

Range	Masterpact
Device short name	OF
Product or component type	Auxiliary contact block
Device application	Control
Range compatibility	MasterPact MTZ2 circuit breaker MasterPact MTZ3 circuit breaker

Complementary

Auxiliary contacts type	Standard
Signal contacts composition	4 NO/NC
Mounting mode	Drawout
Breaking capacity	6 A AC-12 690 V AC 50/60 Hz 10 A AC-12 240/380 V AC 50/60 Hz 10 A AC-12 480 V AC 50/60 Hz 10 A DC-12 24/48 V DC 10 A DC-12 125 V DC 3 A DC-12 250 V DC
Minimum load	100 mA at 24 V 2 mA at 15 V

Packing Units

Unit Type of Package 1	PCE
Number of Units in Package 1	1
Package 1 Weight	1.066 kg
Package 1 Height	4 cm
Package 1 width	7 cm
Package 1 Length	4 cm

Offer Sustainability

REACH Regulation	REACH Declaration
EU RoHS Directive	Compliant EU RoHS Declaration
Mercury free	Yes
RoHS exemption information	Yes

China RoHS Regulation	China RoHS declaration Product out of China RoHS scope. Substance declaration for your information
-----------------------	---

Contractual warranty

Warranty	18 months
----------	-----------