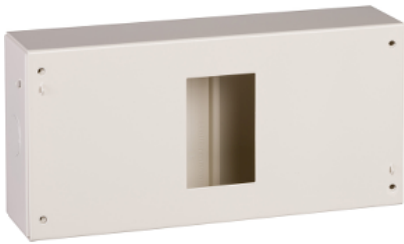


# Product datasheet

Specifications



## G9 surface enclosure - IP 30 - 4 ways - steel

Local distributor code: 382092008 14599

### Main

Product or component type	Enclosure
Enclosure type	Distribution enclosure
Nb of 18 mm modules per row	4
Colour	Enclosure: white (RAL 9003)

### Complementary

Enclosure mounting	Surface
Nb of horizontal rows	1
Type of rail	DIN
Mounting plate description	Without mounting plate
Cable entry	2 knock-outs
Enclosure material	Enclosure: steel
Width	122.5 mm
Height	250 mm
Depth	63 mm

### Environment

IP degree of protection	IP30 conforming to IEC 60529
-------------------------	------------------------------

### Packing Units

Unit Type of Package 1	PCE
Number of Units in Package 1	1
Package 1 Weight	863.0 g
Package 1 Height	6 cm
Package 1 width	12.5 cm
Package 1 Length	25 cm
Unit Type of Package 2	S03
Number of Units in Package 2	12
Package 2 Weight	11.192 kg
Package 2 Height	30 cm

Package 2 width	30 cm
Package 2 Length	40 cm
Unit Type of Package 3	P12
Number of Units in Package 3	48
Package 3 Weight	64.768 kg
Package 3 Height	65 cm
Package 3 width	80 cm
Package 3 Length	120 cm

### Offer Sustainability

EU RoHS Directive	Pro-active compliance (Product out of EU RoHS legal scope) <a href="#">EU RoHS Declaration</a>
-------------------	---

### Contractual warranty

Warranty	18 months
----------	-----------