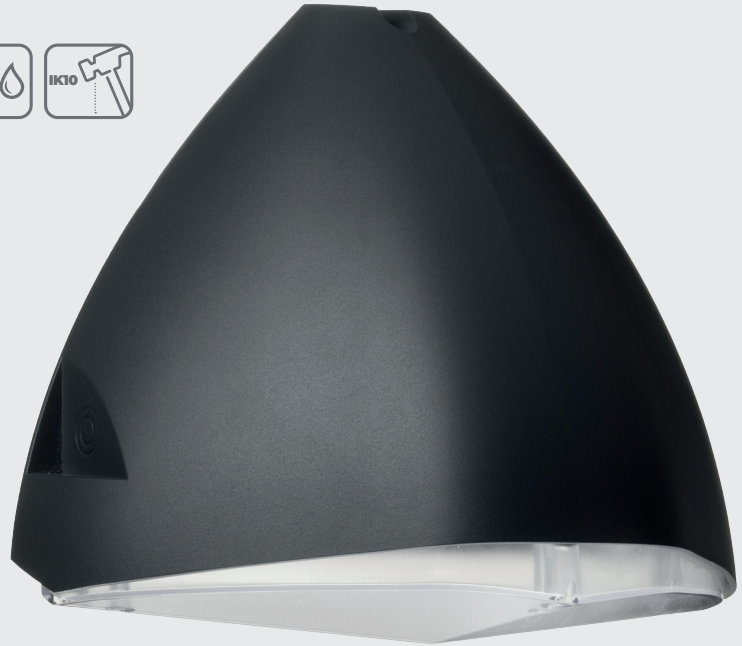




ZENITH

ARCHITECTURAL WALLPACK



Zenith combines attractive aesthetics with high performance, in a practical robust housing that is suitable for any public space. The area distribution lens provides even illumination with the benefit of selectable lumen output and choice of 3000K or 4000K, all in one product.

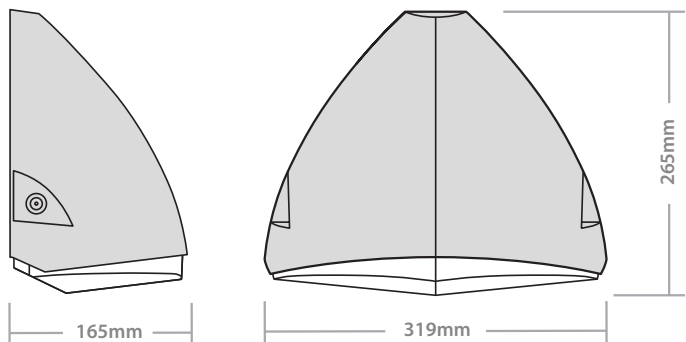
Features

- Attractive architectural design
- Selectable lumen output and colour temperature to suit any project
- Tamper resistant screws to lens
- Integral photocell and emergency options available
- Contemporary RAL7016 Anthracite Finish

Specification

Material:	Body: Die-Cast Aluminium Diffuser: Polycarbonate
Colour Temperature:	3000K/4000K Selectable
Colour Finish	RAL7016 Anthracite
CRI	Ra>80
Beam Angle	110° Area Flood
LED Lifetime:	L80B50 >54,000 Hrs
IP Rating:	IP65
IK Rating:	IK10
Working Temperature:	-20°C to 40°C
Power Factor	>0.9
Emergency Battery Type	LifePO4
Electrical Class	Class I
Guarantee:	5 Years (Emergency batteries 2 years)

Dimensions

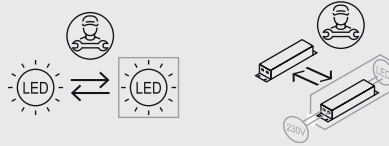
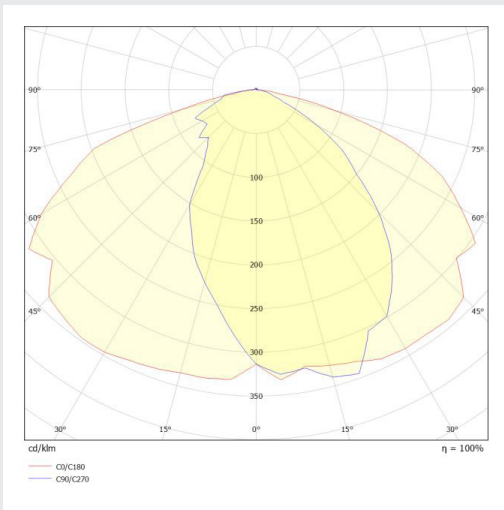


Product Code	Description	Wattage	Lumen Output	Emergency Lumen Output	Efficacy	Barcode	Weight (kg)
ZENA-CCT	Zenith	13W/18W/28W	1700 lm 2500 lm 3500 lm	-	131 lm/W 139 lm/W 125 lm/W	5055807623216	1.92
ZENAE-CCT	Zenith c/w 3Hr Emergency	13W/18W/28W		275 lm		5055807623223	2.07
ZENAPC-CCT	Zenith c/w Photocell	13W/18W/28W		-		5055807623230	2.0
ZENAEP-CCT	Zenith c/w 3Hr Emergency & Photocell	13W/18W/28W		275 lm		5055807623247	2.15

Maximum Fittings Per Circuit

Automatic Circuit Breaker Type:	B6	B10	B13	B16	B20	C10	C13	C16	C20
Rated Current:	6A	10A	13A	16A	20A	10A	13A	16A	20A
Cable (mm):	1.5	1.5	1.5	2.5	2.5	1.5	1.5	2.5	2.5
ZENA-CCT	27	46	60	73	90	46	60	73	90
ZENAE-CCT	23	42	56	69	86	42	56	69	86
ZENAPC-CCT	25	44	58	71	88	44	58	71	88
ZENAEP-CCT	21	40	54	67	84	40	54	67	84

Light Distribution Curve



www.redarrowelectrical.co.uk