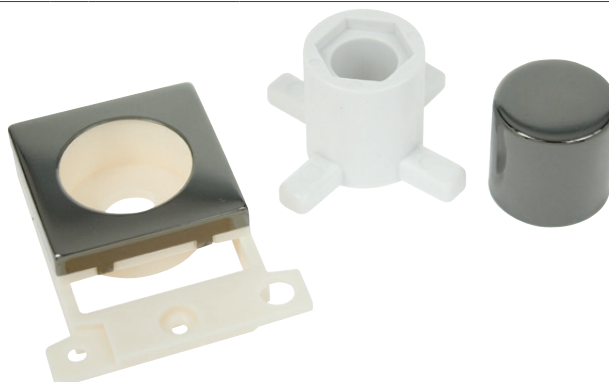


**Product Code:** MD150BN

**Description:** Ingot Dimmer Module Mounting Kit



## General Information

<b>Dimensions (mm)</b>	41 (W) x 52.5 (H) x 13.2 (D)	
<b>Finish</b>	Black Nickel	
<b>Materials</b>	Frame: Nylon	Control Button: Urea
	Cover & Control Button: Stainless Steel	
<b>Modular Rocker Switches</b>	Yes	
<b>Minimum Back Box Depth (mm)</b>	47	
<b>Operational Temperature (°C)</b>	-5 to +40	
<b>Warranty (Years)</b>	10	

**Standards** BS 5733

## Additional Information

For cleaning / polishing of products, use only a soft, dry, clean cloth.  
Ensure that the mains supply is isolated before commencing installation and refer to the circuit diagram with the relevant product.  
Bare earth cables must always be covered with appropriate sleeving and wired to the earth terminal.

## Compatible Dimmer Modules

MD9014: 100W Dual Mode LED Dimmer Module  
MD9001: 6A Push ON/OFF (Dummy Dimmer / Non Dimmable) Module  
MD9010: 1-10V Analogue Rotary Dimmer Module  
MD9022: 40-250W Leading Edge Dimmer Module  
MD9042: 60-400W Leading Edge Dimmer Module