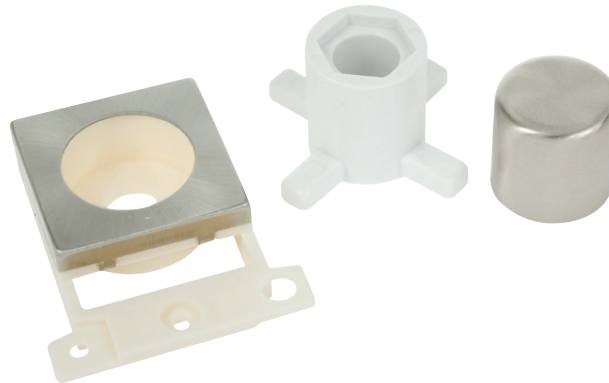


Technical Specification

Product Code: MD150SC

Description: Ingot Dimmer Module Mounting Kit



General Information

Dimensions (mm)	41 (W) x 52.5 (H) x 13.2 (D)		
Finish	Satin Chrome		
Materials	Frame: Nylon	Control Button: Urea	
	Cover & Control Button: Stainless Steel		
Modular Rocker Switches	Yes		
Minimum Back Box Depth (mm)	47		
Operational Temperature (°C)	-5 to +40		
Warranty (Years)	10		
Standards	BS 5733		

Additional Information

For cleaning / polishing of products, use only a soft, dry, clean cloth. Ensure that the mains supply is isolated before commencing installation and refer to the circuit diagram with the relevant product. Bare earth cables must always be covered with appropriate sleeving and wired to the earth terminal.

Compatible Dimmer Modules

- MD9014: 100W Dual Mode LED Dimmer Module
- MD9001: 6A Push ON/OFF (Dummy Dimmer / Non Dimmable) Module
- MD9010: 1-10V Analogue Rotary Dimmer Module
- MD9022: 40-250W Leading Edge Dimmer Module
- MD9042: 60-400W Leading Edge Dimmer Module