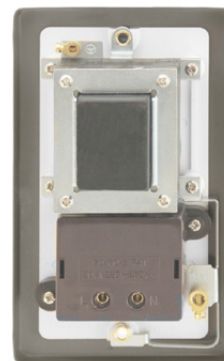


Product Code: VPSC100WH

Description: 115V/230V Dual Voltage Shaver Socket Outlet



General Information

Plate Dimensions (mm)	88 (W) x 146 (H) x 8 (D)
Dimensions With Gasket (mm)	91 (W) x 149 (H) x 9 (D)
Plate Fixing Centres - Horizontal (mm)	120.6
Style	Victorian
Finish	Satin Chrome
Insert Colour	White
Gasket Colour	White
Materials	Front Plate: Stainless Steel Terminals: Brass Contacts: Silver "on-lay" Copper / Brass Earth Strap: Mild Steel
Anti Microbial Certified	No
Rated Voltage (V~) (Ue)	240
Load Rating @115V (Va)	20
Load Rating @230V (Va)	20
Thermal Protection Device	PTC Resettable Fuse
Termination Type	Screw
Terminal Size (mm)	Ø3.5
Terminal Capacity - Solid (mm²)	2 x 1.5 or 1 x 2.5
Socket Features	Safety Interlock Shutter
Twin Earth Terminals	Yes
Product Marking	Shavers Only, 230V~, 115V~
Minimum Back Box Depth (mm)	47
Ingress Protection	IP21
Operational Temperature (°C)	-5 to +40
Warranty (Years)	10
Standards	BS EN IEC 61558-1 BS EN 61558-2-5

Insert & Rear Housing : Urea
Terminal Screws: Steel & Yellow Passivated
Internal Busbars: Formed Pressed Brass
Gasket: Nylon

Frequency (Hz) 50/60

Terminal Torque Value (Nm) 0.5

Additional Information

For cleaning / polishing of products, use only a soft, dry, clean cloth.
This outlet is not continuously rated and therefore not suitable for use as a permanent charging outlet. CLICK dual voltage shaver outlets incorporate a double wound isolating transformer rated 20Va at 230V or 115V and meets BS EN 61558-2-5:2010 making it safe for use in bathrooms. PTC resettable fuses increase resistance as temperature increases due to increased flow. PTC resettable fuses are designed to limit unsafe currents while allowing constant safe current levels, resistance will "reset" automatically when the fault is removed and temperature returns to a safe level. Ensure that the mains supply is isolated before commencing installation and refer to the circuit diagram with the relevant product.
Bare earth cables must always be covered with appropriate sleeving and wired to the earth terminal.