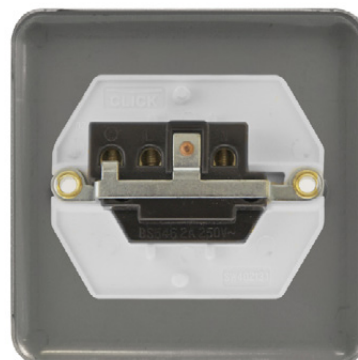


Product Code: DPSC039WH

Description: 2A Round Pin Socket Outlet



General Information

Plate Dimensions (mm)	88 (W) x 88 (H) x 8 (D)	
Dimensions With Gasket (mm)	91 (W) x 91 (H) x 9 (D)	
Plate Fixing Centres - Horizontal (mm)	60.3	
Style	Rounded Profile	
Finish	Satin Chrome	
Insert Colour	White	
Gasket Colour	White	
Materials	Front Plate: Stainless Steel Rear Housing: Nylon Terminal Screws: Steel & Yellow Passivated Earth Strap: Mild Steel	Insert: Urea Terminals: Brass Internal Busbars: Formed Pressed Brass
Anti Microbial Certified	No	
Rated Voltage (V~) (Ue)	250	Frequency (Hz) 50
Resistive Load Rating (A)	2	
Termination Type	Screw	
Terminal Size (mm)	Ø5	Terminal Torque Value (Nm) 0.5
Terminal Capacity - Solid (mm²)	3 x 1.5	
Switched	No	
Twin Earth Terminals	No	
Minimum Back Box Depth (mm)	25	
Ingress Protection	IP20	
Operational Temperature (°C)	-5 to +40	
Warranty (Years)	10	
Standards	BS 546	

Additional Information

For cleaning / polishing of products, use only a soft, dry, clean cloth.
Ensure that the mains supply is isolated before commencing installation and refer to the circuit diagram with the relevant product.
Bare earth cables must always be covered with appropriate sleeving and wired to the earth terminal.