

TRA250VAO 400-440/110 TRANSFORMER

TYPE	Double Wound & Earth Screen
------	-----------------------------

Loading/ Running Cycle	CONTINUOUS
VA Rating	250VA
Input Voltage	400-440V
Input AMP Load	0.57A
Output Voltage	110V CENTRE TAPPED TO EARTH (55-E-55)
Output AMP Load	2.27A
Incoming Protective Devices	N/A HARDWIRED
Outgoing Protective Devices	N/A HARDWIRED
Input Auxiliary (App Inlet etc)	SCREW TERMINALS
Output Auxiliary (Sockets etc)	SCREW TERMINALS
Frequency	50/60 Hz
Cooling	DRY- AIR COOLED
Insulation	CLASS F
Enclosure Type	N/A
Dimensions	125x120x104mm (H,L,D)
Weight	4kg



**All images used for illustrative purposes only*



Page 1 of 2



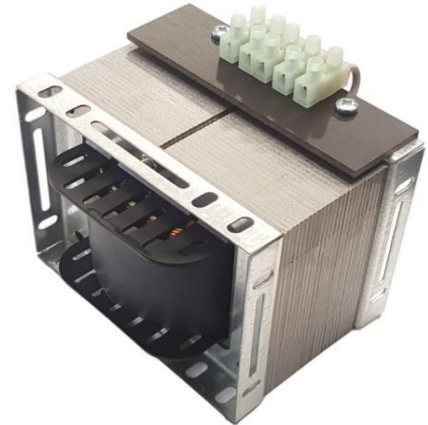
TRA250VAO 400-440/110

TRANSFORMER

TYPE Double Wound & Earth Screen

Additional items

N/A



**All images used for illustrative purposes only*

Notes



Page 2 of 2

A TRADING DIVISION OF
CEE NORM
U.K. Ltd

Reg No. 2581049 (England & Wales)
Reg. Office: Unit 2 Highbridge
Court, Stafford Park 1, Telford,
Shropshire, TF3 3BD



0161 336 7111
01952 212700



www.transpowerengineering.co.uk
www.ceenorm.co.uk



sales@transpowerengineering.co.uk
sales@ceenorm.co.uk

