

Micro+ Trunking 20mm x 10mm



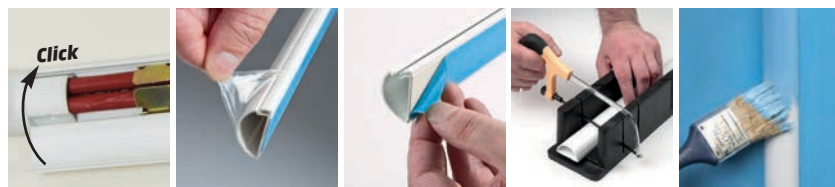
D-Line 20 x 10mm Micro+ profile gives a neat solution for single cables, while offering additional internal capacity that can be useful around corners.

Complementary Clip-Over bends and tees can provide a perfect finish and are incredibly easy to install.

Ideal for flexible cables (up to 8mm outer diameter), also fibre-optic, satellite/aerial and broadband cable installations.

- Discreet and stylish appearance; only 20 x 10mm (WxH)
- Patented hinge & click-lock lid
- Paintable
- Clip-Over accessories available for perfect finish
- 'Easy to install, looks great!'
- Self-adhesive
- Fully safety tested and certified to BS EN 50085-1:2005

Code	Description	Colour
R2D2010W	(L) 2m x (W) 20mm x (H) 10mm	White
R3D2010W	(L) 3m x (W) 20mm x (H) 10mm	White



Product Specification

Production method	<ul style="list-style-type: none">• Single piece design, produced in one single process by extrusion
PVC base & lid	<ul style="list-style-type: none">• Light weight, easy to handle & cut - lid cannot detach• Self-extinguishing• Can be drilled
Elastomer hinge	<ul style="list-style-type: none">• Effectively bonds base & lid• Impact absorbing• Can be opened & closed thousands of times
Available colours	<ul style="list-style-type: none">• White
UV stabilised	<ul style="list-style-type: none">• Will not discolour or turn brittle in sunlight
Operating temperature	<ul style="list-style-type: none">• Stable between -30°C upto +60°C
½ round design	<ul style="list-style-type: none">• No sharp edges• Enables subtle aesthetics• Blends above skirting
External dimensions	<ul style="list-style-type: none">• 20mm x 10mm (w x h)
Tape	<ul style="list-style-type: none">• Foam backed 1mm thick• Effective on clean dry surfaces• Caution, can spoil surfaces on removal
Paintable	<ul style="list-style-type: none">• Scuff using gentle abrasive such as sandpaper, so paint keys for best results
Weight	<ul style="list-style-type: none">• 0.08 kg per metre
Packaging	<ul style="list-style-type: none">• Each length supplied with removable film cover
Capacity	<ul style="list-style-type: none">• If containing 240v cables leave 45% of internal capacity for air circulation
Quality approvals	<ul style="list-style-type: none">• BS EN 50085 - 1:2005 Part 1 SGS Registration ELS 185841/2/C/AB/16