

QUICK START GUIDE

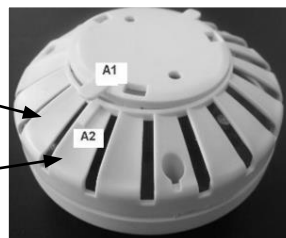
Follow these steps exactly, and **BEFORE YOU INSTALL ANY ALARMS** to have them paired in seconds! Read through the steps first, **BEFORE** you start, to familiarise yourself with each step.

DO THIS BEFORE YOU INSTALL ANY OF THE DEVICES!

1. Working on a table top or similar, turn all alarm baseplates clockwise to the "ON" position (the red LED on the front will light briefly when you do this and it will make a quiet click sound) and **place them to your right**. Note: The baseplate may be a bit stiff to turn.

In the "ON" position, the baseplate tab lines up with this arrow (it only turns a small amount)

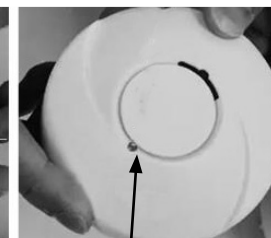
In the "OFF" position, the baseplate tab lines up with the arrow



2. On the **first alarm** (doesn't matter which) hold down the black pairing button on the back (for approx. 5 seconds) **until the red LED lights up and stays on**. Put this **directly in front of you**, where you can see the LED. (It stays on for 30 seconds).



WIRELESS PAIRING BUTTON



WIRELESS PAIRING MODE: THE RED LED IS ON FOR 30 SECONDS

3. On the next alarm, hold the black pairing button **ONLY FOR 2 SECONDS (NOT MORE) – THEN LET GO**. The red LED on the front will **flash 3 times**. This is now paired! Place this alarm **to your left**. (If you accidentally hold the button too long and the red LED stays lit like the first alarm, place it back to your right until it goes out – you will have to repeat Step 2 for the first alarm, then Step 3 for this alarm).

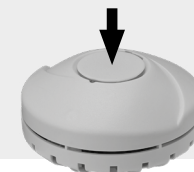
4. Making sure the red LED is still lit on the first alarm directly in front of you, repeat Step 3 for each of the alarms to your right. If the red LED on the first alarm (directly in front of you) goes out, repeat Step 2 for that alarm. Then continue with Step 3 for the remaining alarms to your right.

5. All of the alarms are now paired – you can test this by holding the TEST button down on any alarm until they have all sounded. This may take up to **20 seconds**.

6. You can now turn them off by turning the baseplate anti-clockwise (they will stay paired) and install them.

7. When installed, repeat Step 5 to test.

PUSH TO TEST & HUSH!



HISPEC

LIGHTING • FIRE & CO DETECTION

For further information, please read the enclosed full instruction manual.