



IP 66 | TYPE 4X, 12 | IK 10



The stainless steel single door wall mounted enclosure range, ASR, with a IP 66 protection degree, is available off the shelf in many different sizes. The risk for component failure, and with that unnecessary downtime, is eliminated as water and dust are prevented from entering the enclosure. This enclosure range is well suited for industries such as food and beverage and pharmaceuticals, as well as almost all other environments, grade dependant.

Material: AISI 304L / AISI 316L pre-grained stainless steel. Body: 1.5 mm. Door for AISI 304L: 1.5 mm / 2 mm for enclosures with a height or width of 600 mm or greater. Door for AISI 316L: 2 mm. Mounting plate: 2 mm galvanized steel.

Body: Folded and seam welded. For ease of installation, each back corner of the enclosure is laser-marked to precisely indicate where to drill holes and affix AWS wall mounting brackets.

Door: Corner formed in one piece. Surface mounted, with 130° opening. Concealed AISI 304 stainless steel hinges with captive pin. Can be mounted to allow left or right hand opening. Sealing is ensured by an injected polyurethane gasket. For AISI 316L, sealing is ensured by an injected silicone gasket. Inner M6 welded studs, to mount optional door profiles MMDP.

Lock: nVent HOFFMAN customized zamak double-bit 3 mm lock, with 90° movement and anti-vibration mechanism. Two locks for 600 mm high to 800 mm high enclosures. Espagnolette three point locking or 3 locks for 1000 mm high enclosures and above. Stainless steel lock and other versions are available as accessories.

Mounting plate: The mounting plate is marked vertically at 10 mm intervals, for easy horizontal positioning of equipment. On the top and bottom there are holes to facilitate cable fixing. Fixed onto M8 press welded studs to the rear of the enclosure. All sides, from 800 mm and above, are strengthened by folded edges. By using the AMG accessory, the mounting plate position can be adjusted to any depth.

Cable access: No gland plate openings as standard, to maximise sealing and cleanliness.

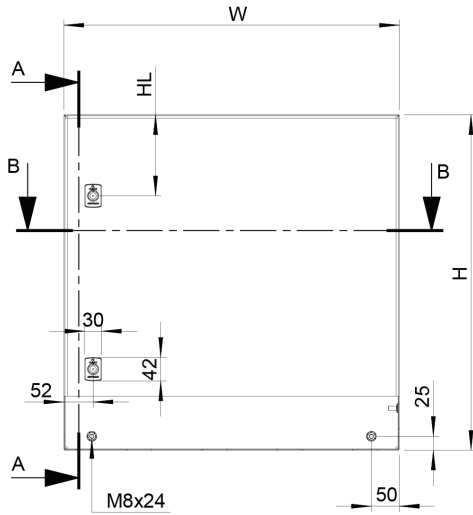
Protection: Corresponds with IP 66 | TYPE 4X, 12 | IK 10.

Finish: 400 pre-grained stainless steel.

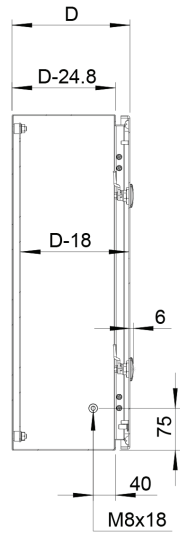
Delivery: Enclosure with door, mounting plate, plastic double-bit 3 mm key, and mounting accessories. Metallic key, for height 1000 mm and above.

Additional information: For outdoor environments, exposed to precipitation, the use of a rain hood is advised. Also in environments known for quick temperature changes, consideration to condensation should be taken. Please see the thermal management section.

Front view

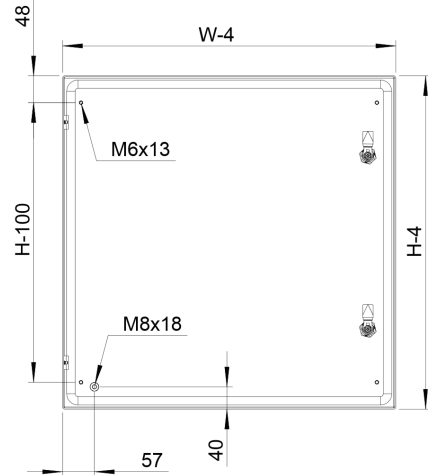


Sectional side view

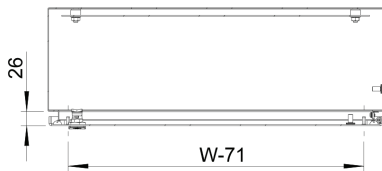


SECTION A-A

Inside door view

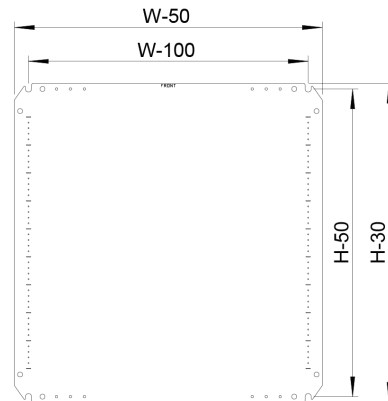


Sectional top view

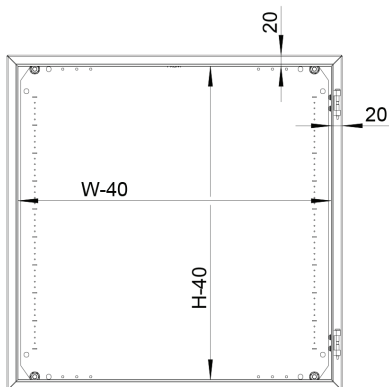


SECTION B-B

Mounting plate



Front view (no door)



Locks	H	HL
1	H < 600	H/2
2	600 ≤ H < 800	145
	800 ≤ H < 1000	150
1*	H ≥ 1000	H/2

With mounting plate

H	W	D	h	w	d	N° of locks	Item no.
180	240	150	150	190	132	1	ASR0182415
180	240	150	150	190	132	1	ASR0182415-316
240	240	150	210	190	132	1	ASR0242415
240	240	150	210	190	132	1	ASR0242415-316
240	360	150	210	310	132	1	ASR0243615
240	360	150	210	310	132	1	ASR0243615-316
300	200	150	270	150	132	1	ASR0302015
300	200	150	270	150	132	1	ASR0302015-316
360	240	150	330	190	132	1	ASR0362415
360	240	150	330	190	132	1	ASR0362415-316
400	300	150	370	250	132	1	ASR0403015
400	300	150	370	250	132	1	ASR0403015-316
400	300	210	370	250	192	1	ASR0403021
400	300	210	370	250	192	1	ASR0403021-316
400	400	210	370	350	192	1	ASR0404021
400	400	210	370	350	192	1	ASR0404021-316
400	600	210	370	550	192	1	ASR0406021
400	600	210	370	550	192	1	ASR0406021-316
500	400	210	470	350	192	1	ASR0504021
500	400	210	470	350	192	1	ASR0504021-316
500	500	210	470	450	192	1	ASR0505021
500	500	210	470	450	192	1	ASR0505021-316
600	400	210	570	350	192	2	ASR0604021
600	400	210	570	350	192	2	ASR0604021-316
600	600	210	570	550	192	2	ASR0606021
600	600	210	570	550	192	2	ASR0606021-316
600	600	300	570	550	282	2	ASR0606030
600	600	300	570	550	282	2	ASR0606030-316
600	800	300	570	750	282	2	ASR0608030
600	800	300	570	750	282	2	ASR0608030-316
800	600	210	770	550	192	2	ASR0806021
800	600	210	770	550	192	2	ASR0806021-316
800	600	300	770	550	282	2	ASR0806030
800	600	300	770	550	282	2	ASR0806030-316
800	800	300	770	750	282	2	ASR0808030
800	800	300	770	750	282	2	ASR0808030-316
1000	800	300	970	750	282	1*	ASR1008030
1000	800	300	970	750	282	1*	ASR1008030-316
1200	800	300	1170	750	282	1*	ASR1208030
1200	800	300	1170	750	282	1*	ASR1208030-316
1200	800	400	1170	750	382	1*	ASR1208040
1200	800	400	1170	750	382	1*	ASR1208040-316
1400	800	400	1370	750	382	1*	ASR1408040
1400	800	400	1370	750	382	3	ASR1408040-316

* 1000 mm high enclosures and above have espagnolette three point locking or 3 locks.

ASR

Stainless steel, single door enclosure

