

JC050005

Toughflood Commercial

Toughflood Commercial 70W 6300lm 90lpcW 4000K IP65 Black

Features & Benefits

- Up to 90 LpcW
- Driver less technology, instant start up
- Polycarbonate Diffuser: Suitable for food preparation
- 2M pre-wired H05RN-F cable for exterior applications
- ADC12 die-cast aluminium body, corrosion resistant, lightweight for easier installation
- Easy access installation with 55° angled Galvanized steel bracket
- 110° beam angle



RATING



CLASS I



BEAM



CRI:RA



WARRANTY



RATING

General Information

Mounting

Wall

Trade Name

Toughflood

Environment

Outdoor

Color Finish

Black

Product Shape

Rectangular

Product Range

Commercial Exterior

IK Rating

IK08

Overall Dimensions

255 x 229 x 36mm

Length (mm)

229

Width (mm)

240

Depth (mm)

36

Product Weight(kg)

1.15

Light Source

LED

Light Source Features

Neutral White

Recommended Product Location

Exterior, general security lighting

Method Of Fix

Mounting Bracket with suitable fixings (not supplied)

IP Rating

IP65

Origin of manufacturer

China

Warranty

2 years standard warranty extends to 3 years when

Driver Manufacturer

LED Manufacturer/Type

Lighting Product Type 1

registered within the first year of purchase (See Website for terms and conditions)

No driver, mains LED Chips

Optoelectronics 2835

Wall Light

Electrical

Voltage Rating220-240

Primary Running Current(Amp)0.35

Operating Frequency Hz50/60Hz

Luminaire Circuit Wattage70

ClassI

EMC Compliant (EN55015)Yes

Power Factor Correction0.9

Input Electrical ConnectionsLive, Earth and Neutral

DimmableNo

Supplied cable rating2M pre-wired H05RN-F

Thermals

Operating Temperature Range °C-20 to +40

Performance Data

LED Life (Hours)54000

Hours life stated is an indication of expected L70 chip and light output calculations when operating in optimum conditions. Product warranty period supports the full product during the term given. The L70 hours expectancy is not correlated with the full product warranty term, nor is it a representation of lumen depreciation during the warranty period.

Energy RatingThis product contains a light source of energy efficiency class F

Actual Lumen Output6300

Lumens Per Circuit Watt90

Standard Deviation Colour Matching - SDCM<6

Color Rendering Index50-79

CRI: Ra70

Correlated Color Temperature4000K

Beam Angle °110

LOR (Light Output Ratio) %100

Photometry AvailableYes

Construction

Primary MaterialADC12 die-cast aluminium

Outer DiffuserOpaque Polycarbonate

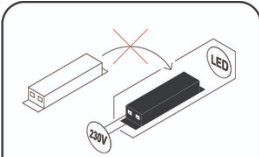
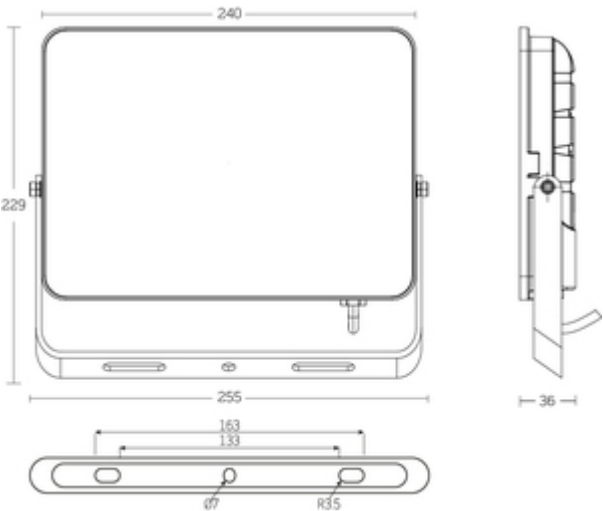
Packaging

Product carton overall dimensions(cm)27.4 x 24.5 x 4.5 cm

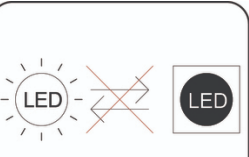
Product Packaged Weight(kg)	1.3
Quantity Per Outer Carton	10
Outer carton(L)- cm	47.0
Outer carton(W)- cm	28.6
Outer carton(H)- cm	25.7
Outer carton Net weight- kg	13.00kg
Outer carton Gross weight- kg	13.50kg
Product Bar Code EAN-13 Number	5052544105975
Outer carton Bar Code ITF-14 Number	15052544105972

Standards & Approvals

Manufactured In Accordance To	BS EN 60598-2015,2-1,2-5
CE Marked	Yes
UKCA Marked	Yes
Date code/Purchase order No.	Yes
WEEE Symbol	Yes
Certificate Of Conformity	Available on request
Accredited Members	LIA, ISO9001-2015, ISO14001-2015



Non-replaceable control gear



Non-replaceable light source



JCC Lighting LTD, Lux Park, Chichester Business Park, City Fields Way, Tangmere, Chichester, West Sussex, PO20 2FT.
Sales: 01243 838999 (8am to 5pm Monday to Friday) Fax: 01243 838998 | sales@jcc.co.uk | www.jcc.co.uk
Company Registration Number: 03044848 | VAT Number: 918544112

This document is uncontrolled if printed, all information is subject to change

Version 134 [06/03/2023]