

# Lepe Wall Light

*Exterior Wall Lighting*



Data Sheet

## Product Information

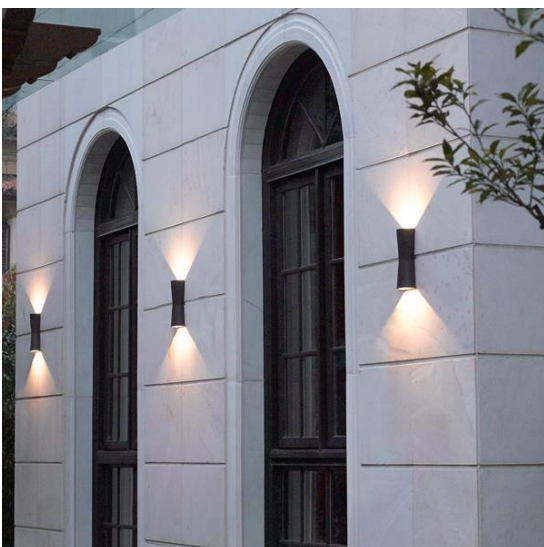
The Lepe wall lights are ideal for Wall washing and accenting for commercial and domestic applications.  
Supplied with an anthracite finish.

Made of Durable Cast Aluminium and Glass lens high quality finish.

Complete with a 2 year warranty

## Product Features

- 2 year warranty
- Class I
- IP54
- 2x7w LED Output
- Supplied in 3000K as standard
- 90° emitting beam angle
- CREE LED technology
- Strong Cast Aluminium Body
- L70 - 40,000hrs



# Product Specification

Product Code	Product Description	Wattage (W)	CCT (K)	Lumens (lm)	CRI (Ra)	Energy Efficiency Class 2021	Protection Class
KSR1900	Lepe 2x7w LED wall light	2x7w	3000	2x389	84	G	I

Nominal voltage	100~240VAC
Operating frequency	50/60Hz
Circuit Wattage	2x7w Cree LED/13.7w including losses
Circuit Current	0.112A
Driver mA Rating	300mA
PFC	0.52
In Rush Current	0.293A Max Peak
Ambient temperature range	-20°C to +40°C
IP rating	54

## Construction

Body: Cast Aluminium  
Lens: Transparent Glass

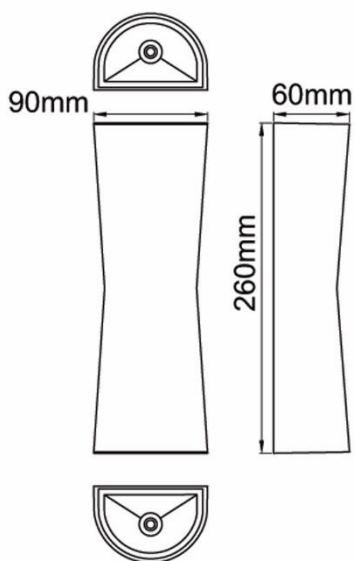
## Standards

BSEN60598-1:2021      Luminaires – Part 1: General requirements and tests

## In Conformity with

LVD      Low voltage directive 2014/35/EU  
EMC      Electromagnetic compatibility directive 2014/30/EU  
ERP      Energy related products directive 2019/2020/EU  
RoHS      Restriction of hazardous substances 2015/863/EU

## Product Dimensions



KSR Lighting is constantly developing and improving its products. For this reason, all product descriptions in this data sheet are intended as a general guide, and KSR may change specifications from time to time in the interest of product development, without prior notification or public announcement. All descriptions in this data sheet present only general particulars of the goods to which they refer and shall not form part of any contract. Data in this guide has been obtained in controlled experimental conditions. However, KSR Lighting cannot accept any liability arising from the reliance on such data to the extent permitted.