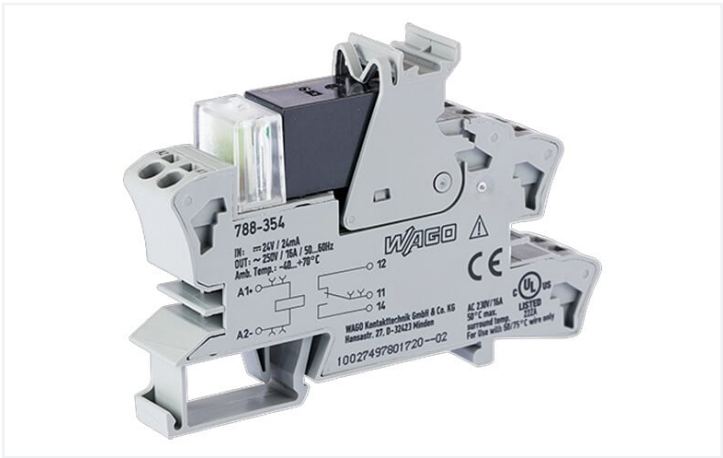


**Data Sheet | Item Number: 788-354**

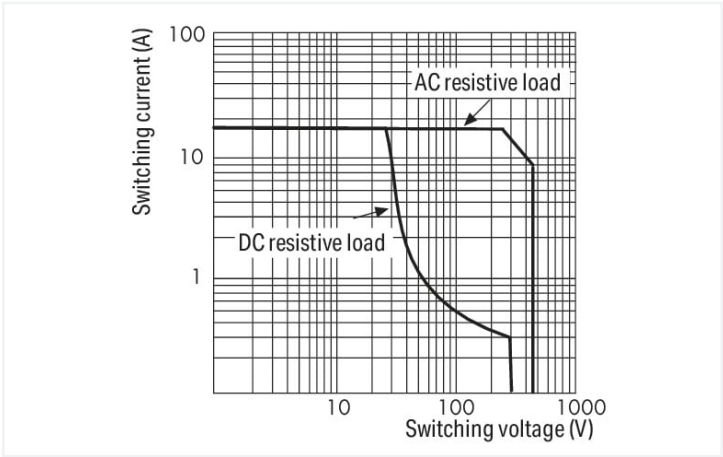
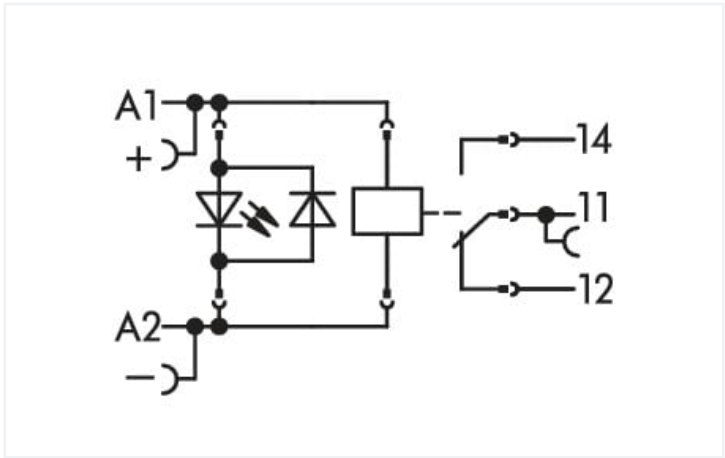
Relay module; Nominal input voltage: 24 VDC; 1 changeover contact; Limiting continuous current: 16 A; for lamp loads; Red status indicator; Module width: 15 mm; 2,50 mm²; gray



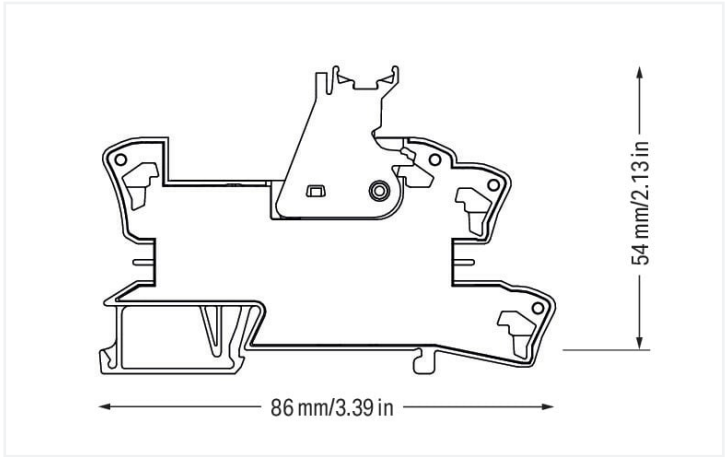
<https://www.wago.com/788-354>



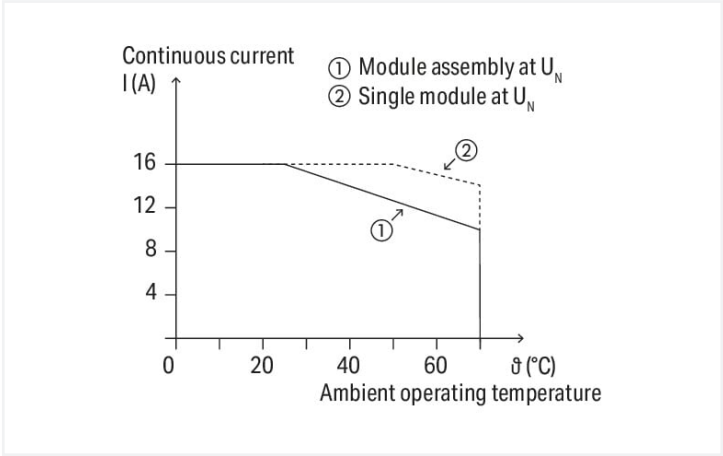
Color: gray



Load limit curve



Dimensions in mm



Current-carrying capacity curve



| Notes              |   |
|--------------------|---|
| Safety information | A separator plate (e.g., 209-191) must be used for voltages greater than 250 V between adjacent relay modules and for compliance with the reinforced insulation requirements.   |
| Note               | <ul style="list-style-type: none"><li>Reinforced insulation between coil and contacts</li><li>To protect the relay coils and contacts, inductive loads must be dampened with an effective protection circuit.</li></ul> |

| Technical data                              |  |
|---|--|
| Control circuit                             |  |
| Nominal input voltage U <sub>N</sub>        | DC 24 V                                    |
| Input voltage range                         | -15 ... +20 %                              |
| Nominal input current at U <sub>N</sub>     | 19 mA                                      |
| Load circuit                                |  |
| Number of changeover/switchover contacts    | 1  |
| Contact material (relay)                    | AgSnO <sub>2</sub>                         |
| Limiting continuous current                 | 16 A                                       |
| Inrush current (resistive) max.             | (AC) 120 A / 0.05 s                        |
| Switching voltage (max.)                    | AC 250 V                                   |
| Switching power (resistive) max.            | AC 4000 VA; DC (see load limit curve)      |
| Recommended minimum load                    | 5 V / 100 mA                               |
| Pull-in time (typ.)                         | 15 ms                                      |
| Drop-out time (typ.)                        | 5 ms                                       |
| Electrical life (NO; resistive load; 23 °C) | 100 x 10 <sup>3</sup> switching operations |
| Mechanical life                             | 10 x 10 <sup>6</sup> switching operations  |

| Signaling        |         |
|------------------|---------|
| Status indicator | Red LED |

| Safety and protection                                  |   |
|--|---|
| Rated voltage  | 250 V   |
| Rated surge voltage                                    | 4 kV  |
| Pollution degree                                       | 3   |
| Dielectric strength (control/load circuit) (AC, 1 min) | 5 kVrms   |
| Dielectric strength (open contact) (AC, 1 min)         | 1 kVrms   |
| Safety information                                     | A separator plate (e.g., 209-191) must be used for voltages greater than 250 V between adjacent relay modules and for compliance with the reinforced insulation requirements. |
| Protection type  | IP20  |

| Connection data         |                                    |
|-------------------------|------------------------------------|
| Connection technology   | Push-in CAGE CLAMP®                |
| Solid conductor         | 0.34 ... 2.5 mm² / 22 ... 14 AWG   |
| Fine-stranded conductor | 0.34 ... 2.5 mm² / 22 ... 14 AWG   |
| Strip length            | 9 ... 10 mm / 0.35 ... 0.39 inches |

| Physical data                     |                      |
|-----------------------------------|----------------------|
| Width                             | 15 mm / 0.591 inches |
| Height                            | 86 mm / 3.386 inches |
| Depth from upper-edge of DIN-rail | 54 mm / 2.126 inches |



| Mechanical data |             |
|-----------------|-------------|
| Mounting type   | DIN-35 rail |

| Material data |          |
|---------------|----------|
| Color         | gray     |
| Fire load     | 0.927 MJ |
| Weight        | 44.1 g   |

| Environmental requirements                            |                                 |
|---|---------------------------------|
| Ambient temperature (operation at U <sub>N</sub> )    | -40 ... +70 °C                  |
| Ambient temperature UL (operation at U <sub>N</sub> ) | -40 ... +50 °C                  |
| Ambient temperature (storage)                         | -40 ... +70 °C                  |
| Processing temperature                                | -25 ... +50 °C                  |
| Temperature range of connection cable                 | ≥ (T <sub>ambient</sub> + 20 K) |

| Standards and specifications |  |
|------------------------------|--|
| Standards/specifications     | EN 61010-2-201<br>EN 61810-1<br>EN 61373<br>UL 508 (max. 10 A) |

| Commercial data       |                          |
|-----------------------|--------------------------|
| Product Group         | 6 (INTERFACE ELECTRONIC) |
| eCl@ss 10.0           | 27-37-16-01              |
| eCl@ss 9.0            | 27-37-16-01              |
| ETIM 8.0              | EC001437                 |
| ETIM 7.0              | EC001437                 |
| PU (SPU)              | 20 (1) pcs               |
| Packaging type        | Box                      |
| Country of origin     | CN                       |
| GTIN                  | 4055143184168            |
| Customs tariff number | 85364900990              |

Approvals / Certificates

General approvals



| Approval  | Standard       | Certificate Name                |
|---|----------------|---------------------------------|
| EAC<br>Brjansker Zertifizierungs-<br>stelle                       | TP TC 004/2011 | EAC RU C-DE.AM02.<br>B.00122/19 |
| UL<br>Underwriters Laboratories<br>Inc. (ORDINARY LOCATI-<br>ONS) | UL 508         | E175199 Vol.1 Sec.6             |

Downloads

Environmental Product Compliance



|  |  |  |  |
|--|--|--|--|
| Compliance Search                        |  |  |  |
| Environmental Product Compliance 788-354 |  |  |  |

| Documentation              |            |                     |  |
|----------------------------|------------|---------------------|--|
| Bid Text                   |            | Instruction Leaflet |  |
| 788-354                    | 25.01.2019 | docx<br>16.59 KB    |  |
| 788-354                    | 19.02.2019 | xml<br>4.85 KB      |  |
| ausschreiben.de<br>788-354 |            |                     |  |

| CAD/CAE-Data         |                              |
|----------------------|------------------------------|
| CAD data             | CAE data                     |
| 2D/3D Models 788-354 | EPLAN Data Portal<br>788-354 |
|                      |                              |
|                      | WSCAD Universe<br>788-354    |
|                      |                              |
|                      | ZUKEN Portal 788-354         |
|                      |                              |

| 1 Compatible Products   |   |   |   |
|---|---|---|---|
| 1.1 Optional Accessories  |   |   |   |
| 1.1.1 Ferrule   |   |   |   |
| 1.1.1.1 Ferrule   |   |   |   |
|   |   |   |   |
| <a href="#">Item No.: 216-241</a><br>Ferrule; Sleeve for 0.5 mm² / 20 AWG; insulated; electro-tin plated; electrolytic copper; gastight crimped; acc. to DIN 46228, Part 4/09.90; white | <a href="#">Item No.: 216-242</a><br>Ferrule; Sleeve for 0.75 mm² / 18 AWG; insulated; electro-tin plated; electrolytic copper; gastight crimped; acc. to DIN 46228, Part 4/09.90; gray | <a href="#">Item No.: 216-243</a><br>Ferrule; Sleeve for 1 mm² / AWG 18; insulated; electro-tin plated; electrolytic copper; gastight crimped; acc. to DIN 46228, Part 4/09.90; red | <a href="#">Item No.: 216-244</a><br>Ferrule; Sleeve for 1.5 mm² / AWG 16; insulated; electro-tin plated; electrolytic copper; gastight crimped; acc. to DIN 46228, Part 4/09.90; black |
| <a href="#">Item No.: 216-542</a><br>Twin ferrule; Sleeve for 2 x 1 mm² / AWG 2 x 18; red, insulated; 12 mm long; red   |   |   |   |
| 1.1.2 Indicators  |   |   |   |

1.1.2.1 Status indication



**Item No.: 788-120**  
Accessories for relay modules; Operation status indicator: red; Nominal operating voltage: 24 VDC

1.1.3 Jumper

1.1.3.1 Jumper



**Item No.: 788-118**  
Jumper; for jumper slot; 2-way; from 1 to 3; insulated; light gray



**Item No.: 788-113**  
Jumper; for jumper slot; 2-way; insulated; light gray



**Item No.: 859-402**  
Jumper; for jumper slot; 2-way; insulated; light gray



**Item No.: 788-114**  
Jumper; for jumper slot; 3-way; insulated; light gray



**Item No.: 788-115**  
Jumper; for jumper slot; 4-way; insulated; light gray



**Item No.: 788-116**  
Jumper; for jumper slot; 6-way; insulated; light gray



**Item No.: 788-117**  
Jumper; for jumper slot; 8-way; insulated; light gray

1.1.4 Marking

1.1.4.1 Double marker carrier



**Item No.: 209-128**  
Adaptor; gray

1.1.4.2 Group marker carrier



**Item No.: 249-105**  
Group marker carrier; gray



**Item No.: 209-145**  
Group marker carrier; white

1.1.4.3 Marker



**Item No.: 209-183**  
Marker; white



**Item No.: 793-502**  
WMB marking card; as card; MARKED; 1 ... 10 (10x); not stretchable; Horizontal marking; snap-on type; white



**Item No.: 793-503**  
WMB marking card; as card; MARKED; 11 ... 20 (10x); not stretchable; Horizontal marking; snap-on type; white



**Item No.: 793-504**  
WMB marking card; as card; MARKED; 21 ... 30 (10x); not stretchable; Horizontal marking; snap-on type; white



**Item No.: 793-505**  
WMB marking card; as card; MARKED; 31 ... 40 (10x); not stretchable; Horizontal marking; snap-on type; white



**Item No.: 793-501**  
WMB marking card; as card; not stretchable; plain; snap-on type; white



**Item No.: 2009-115**  
WMB-Inline; for Smart Printer; 1500 pieces on roll; stretchable 5 - 5.2 mm; plain; snap-on type; white



1.1.4.4 Marking devices



Item No.: 210-110  
Fiber-tip pen

1.1.4.5 Marking strip



Item No.: 2009-110  
Marking strips; for Smart Printer; on reel;  
not stretchable; plain; snap-on type; white

1.1.4.6 Protective marker cover



Item No.: 209-184  
Protection cover; transparent

1.1.5 Tool

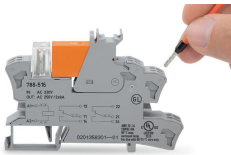
1.1.5.1 Operating tool



Item No.: 210-720  
Operating tool; Blade: 3.5 x 0.5 mm; with a  
partially insulated shaft; multicoloured

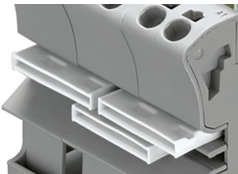
Installation Notes

Conductor termination



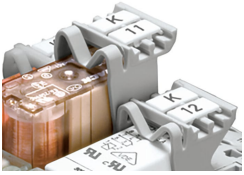
Conductor termination

Commoning



Easy commoning using adjacent jumpers

Marking



Marking using WMB Multi markers and group marker carriers.