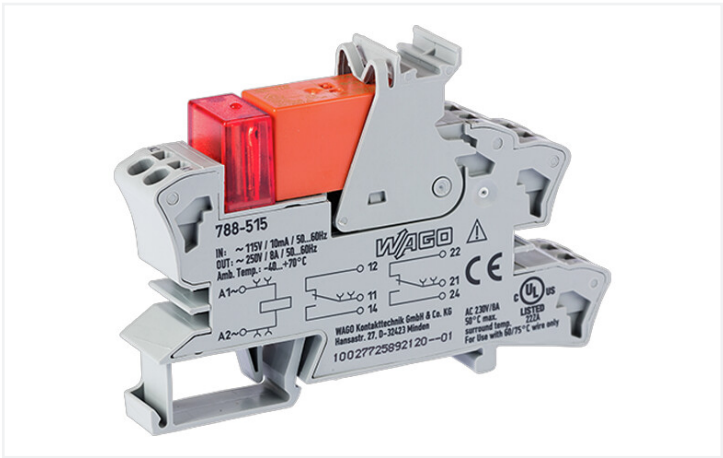


**Data Sheet | Item Number: 788-515**

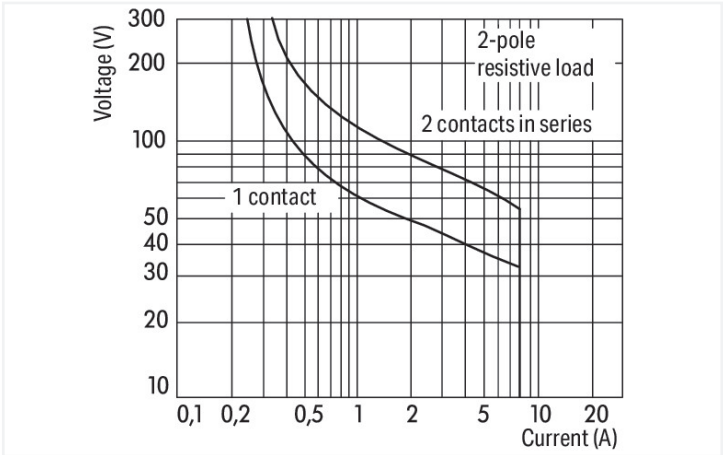
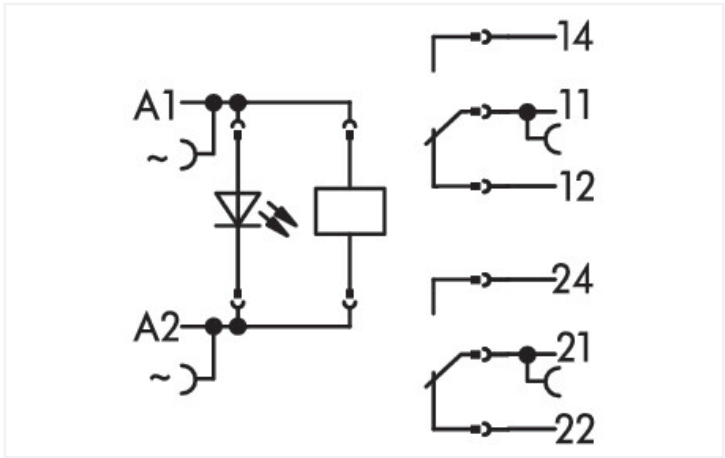
Relay module; Nominal input voltage: 115 VAC; 2 changeover contacts; Limiting continuous current: 8 A; Red status indicator; Module width: 15 mm; 2,50 mm²; gray



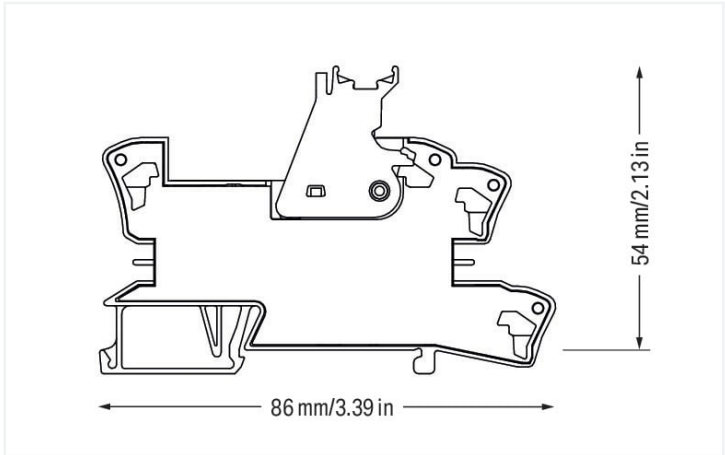
<https://www.wago.com/788-515>



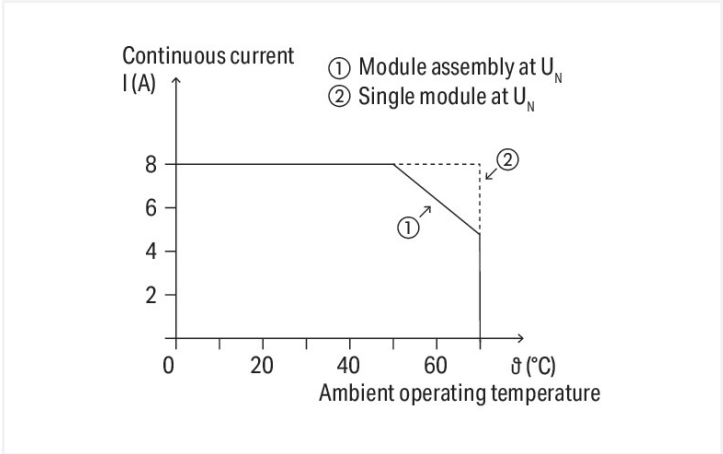
Color: gray



DC load limit curve



Dimensions in mm



Current-carrying capacity curve



Notes	
Safety information 1	A separator plate (e.g., 209-191) must be used for voltages greater than 250 V between adjacent relay modules and for compliance with the reinforced insulation requirements.
Note	<ul style="list-style-type: none"><li>• Reinforced insulation between coil and contacts</li><li>• To protect the relay coils and contacts, inductive loads must be dampened with an effective protection circuit.</li></ul>

Technical data	
Control Circuit	Load circuit
Nominal input voltage U <sub>N</sub>	AC 115 V
Input voltage range	±10 %
Nominal input current at U <sub>N</sub>	8 mA
	Number of changeover/switchover contacts
	2
	Contact material (relay)
	AgNi 90/10
	Limiting continuous current
	8 A
	Inrush current (resistive) max.
	(AC) 15 A / 4 s
	Switching voltage (max.)
	AC 250 V
	Switching power (resistive) max.
	AC 2000 VA; DC (see load limit curve)
	Switching capacity
	AC-15: 3 A / AC 250 V; DC-13: 2 A / DC 24 V
	Recommended minimum load
	12 V / 10 mA
	Pull-in time (typ.)
	10 ms
	Drop-out time (typ.)
	35 ms
	Bounce time (typ.)
	10 ms
	Electrical life (NO; resistive load; 23 °C)
	10 x 10 <sup>3</sup> switching operations
	Mechanical life
	30 x 10 <sup>6</sup> switching operations
	Switching frequency with/without load (max.)
	6 min <sup>-1</sup> / 1200 min <sup>-1</sup>

Signaling	
Status indicator	Red LED

Safety and protection	
Rated voltage	250 V
Rated surge voltage	4 kV
Pollution degree	3
Dielectric strength (control/load circuit) (AC, 1 min)	5 kVrms
Dielectric strength (open contact) (AC, 1 min)	1 kVrms
Dielectric strength (load/load circuit) (AC, 1 min)	2.5 kVrms
Safety information 1	A separator plate (e.g., 209-191) must be used for voltages greater than 250 V between adjacent relay modules and for compliance with the reinforced insulation requirements.
Protection type	IP20

Connection data	
Connection technology	Push-in CAGE CLAMP®
Solid conductor	0.34 ... 2.5 mm² / 22 ... 14 AWG
Fine-stranded conductor	0.34 ... 2.5 mm² / 22 ... 14 AWG
Strip length	9 ... 10 mm / 0.35 ... 0.39 inches



Physical data		
Width		15 mm / 0.591 inches
Height		86 mm / 3.386 inches
Depth from upper-edge of DIN-rail		54 mm / 2.126 inches

Mechanical data		
Mounting type		DIN-35 rail

Material Data		
Color		gray
Fire load		0.834 MJ
Weight		45 g

Environmental requirements		
Ambient temperature (operation at U <sub>N</sub> )		-40 ... +70 °C
Ambient temperature UL (operation at U <sub>N</sub> )		-40 ... +50 °C
Surrounding air temperature (storage)		-40 ... +70 °C
Processing temperature		-25 ... +50 °C
Temperature range of connection cable		≥ (T <sub>ambient</sub> + 20 K)

Standards and specifications		
Standards/specifications		EN 61010-2-201 EN 61810-1 EN 61373 UL 508 DNV

Basic relay		
WAGO Basic Relay		788-176

Commercial data		
Product Group		6 (INTERFACE ELECTRONIC)
eCl@ss 10.0		27-37-16-01
eCl@ss 9.0		27-37-16-01
ETIM 8.0		EC001437
ETIM 7.0		EC001437
PU (SPU)		20 (1) pcs
Packaging type		Box
Country of origin		CN
GTIN		4045454389512
Customs tariff number		85364900990

Approvals / Certificates		
--------------------------	--	--



General approvals



Approval	Standard	Certificate Name
EAC Brjansker Zertifizierungs- stelle	TP TC 004/2011	EAC RU C-DE.AM02. B.00122/19

Approvals for marine applications



Approval	Standard	Certificate Name
DNV DNV Germany GmbH	DNV-CG-0339, Aug. 2021	TAA00001D1
PRS Polski Rejestr Statków	-	TE/2186/880590/18

Downloads

Environmental Product Compliance

Compliance Search
Environmental Product Compliance 788-515



Documentation

Bid Text
788-515
19.02.2019
xml 4.60 KB
788-515
25.01.2019
docx 16.42 KB



Instruction Leaflet
Sockets with Elementa- ry Relay/ SSR
V 1.0.1 09.10.2020
pdf 2271.22 KB



CAD/CAE-Data

CAD data
2D/3D Models 788-515



CAE data
EPLAN Data Portal 788-515
WSCAD Universe 788-515
ZUKEN Portal 788-515



1 Compatible Products

1.1 Optional Accessories

1.1.1 Basic relay



1.1.1.1 Basic relay



**Item No.: 788-176**  
Basic relay; Nominal input voltage: 115 VAC; 2 changeover contacts; Limiting continuous current: 8 A; Module width: 13 mm; Module height: 15 mm

1.1.2 Ferrule

1.1.2.1 Ferrule



**Item No.: 216-241**  
Ferrule; Sleeve for 0.5 mm² / 20 AWG; insulated; electro-tin plated; electrolytic copper; gastight crimped; acc. to DIN 46228, Part 4/09.90; white



**Item No.: 216-242**  
Ferrule; Sleeve for 0.75 mm² / 18 AWG; insulated; electro-tin plated; electrolytic copper; gastight crimped; acc. to DIN 46228, Part 4/09.90; gray



**Item No.: 216-243**  
Ferrule; Sleeve for 1 mm² / AWG 18; insulated; electro-tin plated; electrolytic copper; gastight crimped; acc. to DIN 46228, Part 4/09.90; red



**Item No.: 216-244**  
Ferrule; Sleeve for 1.5 mm² / AWG 16; insulated; electro-tin plated; electrolytic copper; gastight crimped; acc. to DIN 46228, Part 4/09.90; black

**Item No.: 216-542**  
Twin ferrule; Sleeve for 2 x 1 mm² / AWG 2 x 18; red, insulated; 12 mm long; red

1.1.3 Filter module

1.1.3.1 Suppressor module



**Item No.: 788-148**  
Filter module; RC filter element; Nominal voltage: 230 VAC

1.1.4 Indicators

1.1.4.1 Status indication



**Item No.: 788-124**  
Accessories for relay modules; Operation status indicator: red

1.1.5 Jumper

1.1.5.1 Jumper



**Item No.: 788-118**  
Jumper; for jumper slot; 2-way; from 1 to 3; insulated; light gray



**Item No.: 788-113**  
Jumper; for jumper slot; 2-way; insulated; light gray



**Item No.: 859-402**  
Jumper; for jumper slot; 2-way; insulated; light gray



**Item No.: 788-114**  
Jumper; for jumper slot; 3-way; insulated; light gray



**Item No.: 788-115**  
Jumper; for jumper slot; 4-way; insulated; light gray



**Item No.: 788-116**  
Jumper; for jumper slot; 6-way; insulated; light gray



**Item No.: 788-117**  
Jumper; for jumper slot; 8-way; insulated; light gray

1.1.6 Marking

1.1.6.1 Double marker carrier



[Item No.: 209-128](#)  
Adaptor; gray

1.1.6.2 Group marker carrier



[Item No.: 249-105](#)  
Group marker carrier; gray



[Item No.: 209-145](#)  
Group marker carrier; white

1.1.6.3 Marker



[Item No.: 209-183](#)  
Marker; white



[Item No.: 793-502](#)  
WMB marking card; as card; MARKED; 1 ... 10 (10x); not stretchable; Horizontal marking; snap-on type; white



[Item No.: 793-503](#)  
WMB marking card; as card; MARKED; 11 ... 20 (10x); not stretchable; Horizontal marking; snap-on type; white



[Item No.: 793-504](#)  
WMB marking card; as card; MARKED; 21 ... 30 (10x); not stretchable; Horizontal marking; snap-on type; white



[Item No.: 793-505](#)  
WMB marking card; as card; MARKED; 31 ... 40 (10x); not stretchable; Horizontal marking; snap-on type; white



[Item No.: 793-501](#)  
WMB marking card; as card; not stretchable; plain; snap-on type; white



[Item No.: 2009-115](#)  
WMB-Inline; for Smart Printer; 1500 pieces on roll; stretchable 5 - 5.2 mm; plain; snap-on type; white

1.1.6.4 Marking devices



[Item No.: 210-110](#)  
Fiber-tip pen

1.1.6.5 Marking strip



[Item No.: 2009-110](#)  
Marking strips; for Smart Printer; on reel; not stretchable; plain; snap-on type; white

1.1.6.6 Protective marker cover



[Item No.: 209-184](#)  
Protection cover; transparent

1.1.7 Tool

### 1.1.7.1 Operating tool

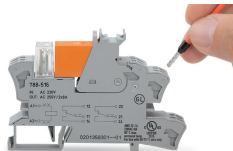


#### Item No.: 210-720

Operating tool; Blade: 3.5 x 0.5 mm; with a partially insulated shaft; multicoloured

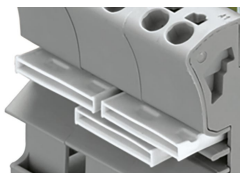
## Installation Notes

### Conductor termination



Conductor termination

## Commoning



Easy commoning using adjacent jumpers

## Marking



Marking using WMB Multi markers and group marker carriers.