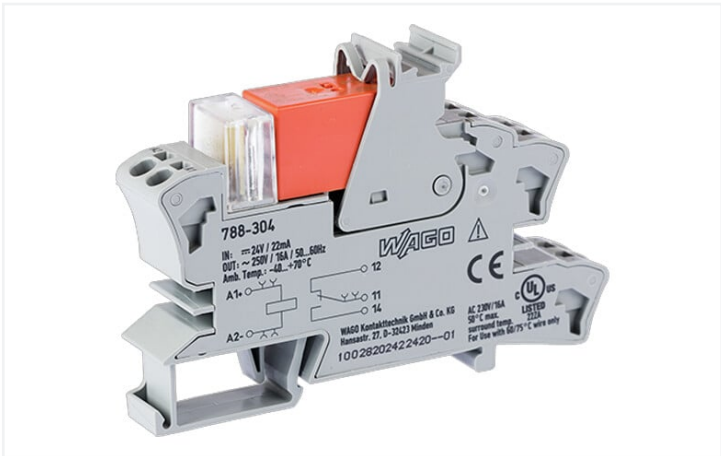


Data Sheet | Item Number: 788-304

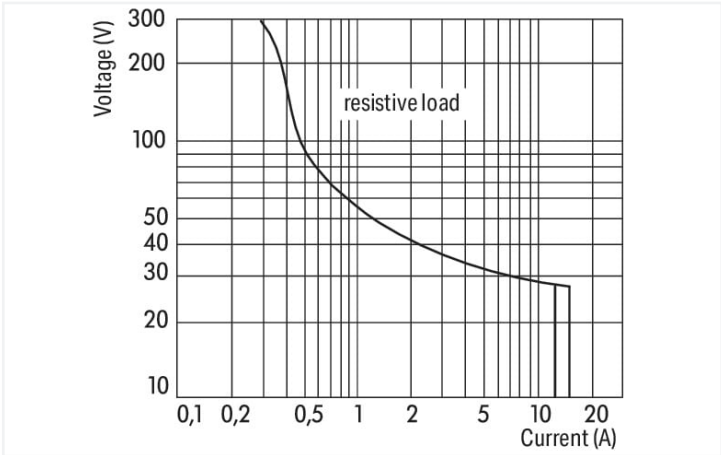
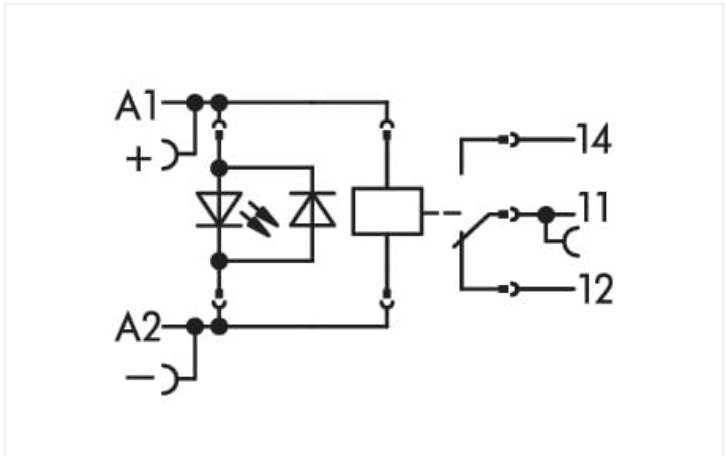
Relay module; Nominal input voltage: 24 VDC; 1 changeover contact; Limiting continuous current: 16 A; Red status indicator; Module width: 15 mm; 2,50 mm²; gray



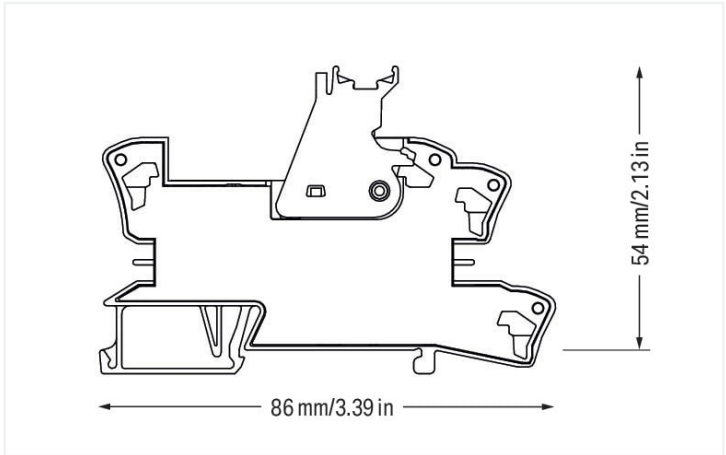
<https://www.wago.com/788-304>



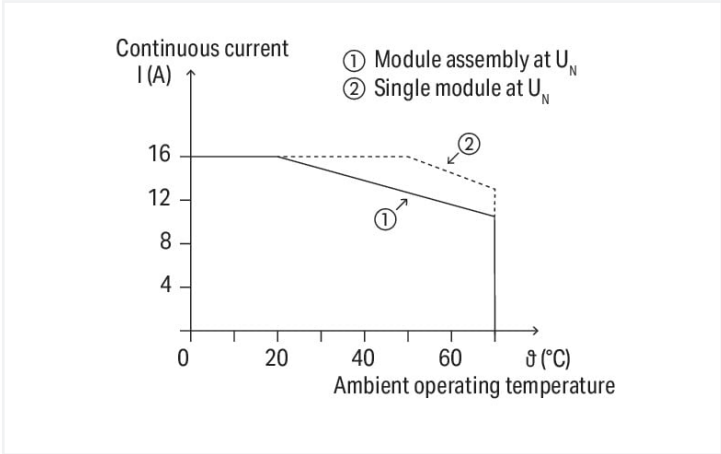
Color: gray



DC load limit curve



Dimensions in mm



Current-carrying capacity curve



Notes	
Safety information	A separator plate (e.g., 209-191) must be used for voltages greater than 250 V between adjacent relay modules and for compliance with the reinforced insulation requirements.
Note	<ul style="list-style-type: none">Reinforced insulation between coil and contactsTo protect the relay coils and contacts, inductive loads must be dampened with an effective protection circuit.

Technical data	
Control circuit	Load circuit
Nominal input voltage U _N	DC 24 V
Input voltage range	±10 %
Nominal input current at U _N	19 mA
	Number of changeover/switchover contacts
	1
	Contact material (relay)
	AgNi 90/10
	Limiting continuous current
	16 A
	Inrush current (resistive) max.
	(AC) 30 A / 4 s
	Switching voltage (max.)
	AC 250 V
	Switching power (resistive) max.
	AC 4000 VA; DC (see load limit curve)
	Switching capacity
	AC-15: 6 A / AC 250 V; DC-13: 2 A / DC 24 V
	Recommended minimum load
	12 V / 10 mA
	Pull-in time (typ.)
	8 ms
	Drop-out time (typ.)
	6 ms
	Bounce time (typ.)
	6 ms
	Electrical life (NO; resistive load; 23 °C)
	30 x 10 ³ switching operations
	Mechanical life
	30 x 10 ⁶ switching operations
	Switching frequency with/without load (max.)
	6 min ⁻¹ / 1200 min ⁻¹

Signaling	
Status indicator	Red LED

Safety and protection	
Rated voltage	250 V
Rated surge voltage	4 kV
Pollution degree	3
Dielectric strength (control/load circuit) (AC, 1 min)	5 kVrms
Dielectric strength (open contact) (AC, 1 min)	1 kVrms
Safety information	A separator plate (e.g., 209-191) must be used for voltages greater than 250 V between adjacent relay modules and for compliance with the reinforced insulation requirements.
Protection type	IP20

Connection data	
Connection technology	Push-in CAGE CLAMP®
Solid conductor	0.34 ... 2.5 mm² / 22 ... 14 AWG
Fine-stranded conductor	0.34 ... 2.5 mm² / 22 ... 14 AWG
Strip length	9 ... 10 mm / 0.35 ... 0.39 inches



Physical data		
Width		15 mm / 0.591 inches
Height		86 mm / 3.386 inches
Depth from upper-edge of DIN-rail		54 mm / 2.126 inches

Mechanical data		
Mounting type		DIN-35 rail

Material data		
Color		gray
Fire load		0.927 MJ
Weight		45.9 g

Environmental requirements		
Ambient temperature (operation at U _N)		-40 ... +70 °C
Ambient temperature UL (operation at U _N)		-40 ... +50 °C
Ambient temperature (storage)		-40 ... +70 °C
Processing temperature		-25 ... +50 °C
Temperature range of connection cable		≥ (T _{ambient} + 20 K)

Standards and specifications		
Standards/specifications		EN 61010-2-201 EN 61810-1 EN 61373 UL 508 (max. 10 A)

Basic relay		
WAGO Basic Relay		788-154

Commercial data		
Product Group		6 (INTERFACE ELECTRONIC)
eCl@ss 10.0		27-37-16-01
eCl@ss 9.0		27-37-16-01
ETIM 8.0		EC001437
ETIM 7.0		EC001437
PU (SPU)		20 (1) pcs
Packaging type		Box
Country of origin		CN
GTIN		4055143184113
Customs tariff number		85364900990

Approvals / Certificates		
--------------------------	--	--



General approvals



Approval	Standard	Certificate Name
EAC Brjansker Zertifizierungs- stelle	TP TC 004/2011	EAC RU C-DE.AM02. B.00122/19
UL Underwriters Laboratories Inc. (ORDINARY LOCATI- ONS)	UL 508	E175199 Vol.1 Sec.6

Downloads

Environmental Product Compliance

Compliance Search
Environmental Product Compliance 788-304



Documentation

Bid Text
788-304
25.01.2019
docx 16.30 KB
788-304
19.02.2019
xml 4.60 KB
ausschreiben.de 788-304



Instruction Leaflet
Sockets with Elementa- ry Relay/ SSR
V 1.0.1 09.10.2020
pdf 2271.22 KB



CAD/CAE-Data

CAD data
2D/3D Models 788-304



CAE data
EPLAN Data Portal 788-304
WSCAD Universe 788-304
ZUKEN Portal 788-304



1 Compatible Products

1.1 Optional Accessories

1.1.1 Basic relay



1.1.1.1 Basic relay



Item No.: 788-154
Basic relay; Nominal input voltage: 24 VDC; 1 changeover contact; Limiting continuous current: 16 A; Module width: 13 mm; Module height: 15 mm

1.1.2 Ferrule

1.1.2.1 Ferrule



Item No.: 216-241
Ferrule; Sleeve for 0.5 mm² / 20 AWG; insulated; electro-tin plated; electrolytic copper; gastight crimped; acc. to DIN 46228, Part 4/09.90; white



Item No.: 216-242
Ferrule; Sleeve for 0.75 mm² / 18 AWG; insulated; electro-tin plated; electrolytic copper; gastight crimped; acc. to DIN 46228, Part 4/09.90; gray



Item No.: 216-243
Ferrule; Sleeve for 1 mm² / AWG 18; insulated; electro-tin plated; electrolytic copper; gastight crimped; acc. to DIN 46228, Part 4/09.90; red



Item No.: 216-244
Ferrule; Sleeve for 1.5 mm² / AWG 16; insulated; electro-tin plated; electrolytic copper; gastight crimped; acc. to DIN 46228, Part 4/09.90; black

Item No.: 216-542
Twin ferrule; Sleeve for 2 x 1 mm² / AWG 2 x 18; red, insulated; 12 mm long; red

1.1.3 Indicators

1.1.3.1 Status indication



Item No.: 788-120
Accessories for relay modules; Operation status indicator: red; Nominal operating voltage: 24 VDC

1.1.4 Jumper

1.1.4.1 Jumper



Item No.: 788-118
Jumper; for jumper slot; 2-way; from 1 to 3; insulated; light gray



Item No.: 788-113
Jumper; for jumper slot; 2-way; insulated; light gray



Item No.: 859-402
Jumper; for jumper slot; 2-way; insulated; light gray



Item No.: 788-114
Jumper; for jumper slot; 3-way; insulated; light gray



Item No.: 788-115
Jumper; for jumper slot; 4-way; insulated; light gray



Item No.: 788-116
Jumper; for jumper slot; 6-way; insulated; light gray



Item No.: 788-117
Jumper; for jumper slot; 8-way; insulated; light gray

1.1.5 Marking



1.1.5.1 Double marker carrier



[Item No.: 209-128](#)
Adaptor; gray

1.1.5.2 Group marker carrier



[Item No.: 249-105](#)
Group marker carrier; gray



[Item No.: 209-145](#)
Group marker carrier; white

1.1.5.3 Marker



[Item No.: 209-183](#)
Marker; white



[Item No.: 793-502](#)
WMB marking card; as card; MARKED; 1 ... 10 (10x); not stretchable; Horizontal marking; snap-on type; white



[Item No.: 793-503](#)
WMB marking card; as card; MARKED; 11 ... 20 (10x); not stretchable; Horizontal marking; snap-on type; white



[Item No.: 793-504](#)
WMB marking card; as card; MARKED; 21 ... 30 (10x); not stretchable; Horizontal marking; snap-on type; white



[Item No.: 793-505](#)
WMB marking card; as card; MARKED; 31 ... 40 (10x); not stretchable; Horizontal marking; snap-on type; white



[Item No.: 793-501](#)
WMB marking card; as card; not stretchable; plain; snap-on type; white



[Item No.: 2009-115](#)
WMB-Inline; for Smart Printer; 1500 pieces on roll; stretchable 5 - 5.2 mm; plain; snap-on type; white

1.1.5.4 Marking devices



[Item No.: 210-110](#)
Fiber-tip pen

1.1.5.5 Marking strip



[Item No.: 2009-110](#)
Marking strips; for Smart Printer; on reel; not stretchable; plain; snap-on type; white

1.1.5.6 Protective marker cover



[Item No.: 209-184](#)
Protection cover; transparent

1.1.6 Tool

1.1.6.1 Operating tool

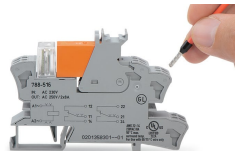


Item No.: 210-720

Operating tool; Blade: 3.5 x 0.5 mm; with a partially insulated shaft; multicoloured

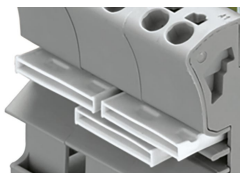
Installation Notes

Conductor termination



Conductor termination

Commoning



Easy commoning using adjacent jumpers

Marking



Marking using WMB Multi markers and group marker carriers.