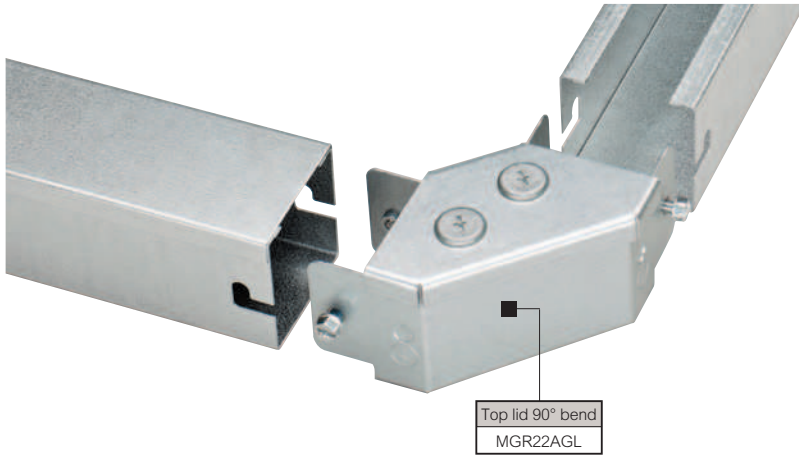
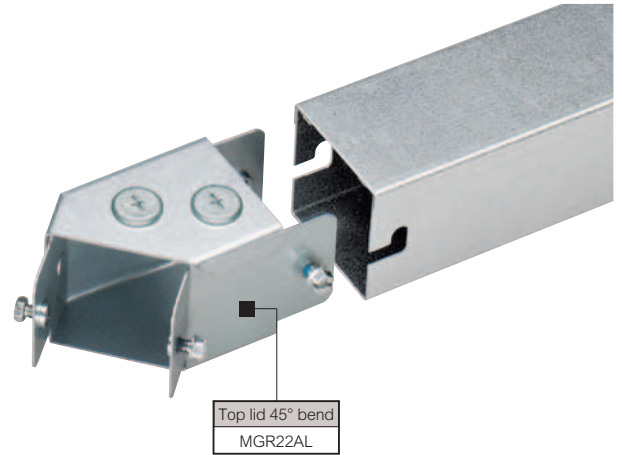


Salamandre® distribution trunking

standard fittings



Top lid 90° bend
MGR22AGL



Top lid 45° bend
MGR22AL



Selection chart (p. 8-9)
Order information (p. 10)
Standards and quality assessment (p. 20)
Dimensions and technical information (p. 24-25)

Pack	Cat. Nos.	Fittings
		90° bends All bends are supplied with lid, lid fixings and coupler screws pre-fitted and backed off
		Top lid 90° bends – gusset
1	MGR Z AGL	1 compartment
1	MGR Z AGL2C	2 compartment
1	MGR Z AGL3C	3 compartment
		Top lid 90° bends – square
1	MGR Z ASL	1 compartment
1	MGR Z ASL2C	2 compartment
1	MGR Z ASL3C	3 compartment
		Inside lid 90° bends – gusset
1	MGR Z BGL	1 compartment
1	MGR Z BGL2C	2 compartment
1	MGR Z BGL3C	3 compartment
		Inside lid 90° bends – square
1	MGR Z BSL	1 compartment
1	MGR Z BSL2C	2 compartment
1	MGR Z BSL3C	3 compartment
		Outside lid 90° bends – gusset
1	MGR Z CGL	1 compartment
1	MGR Z CGL2C	2 compartment
1	MGR Z CGL3C	3 compartment
		Outside lid 90° bends – square
1	MGR Z CSL	1 compartment
1	MGR Z CSL2C	2 compartment
1	MGR Z CSL3C	3 compartment

Pack	Cat. Nos.	Fittings (continued)
		45° bends All bends are supplied with lid, lid fixings and coupler screws pre-fitted and backed off
		Top lid 45° bends
1	MGR Z AL	1 compartment
1	MGR Z AL2C	2 compartment
1	MGR Z AL3C	3 compartment
		Inside lid 45° bends
1	MGR Z BL	1 compartment
1	MGR Z BL2C	2 compartment
1	MGR Z BL3C	3 compartment
		Outside lid 45° bends
1	MGR Z CL	1 compartment
1	MGR Z CL2C	2 compartment
1	MGR Z CL3C	3 compartment
		Flange
1	MGR Z F	
		End cap
1	MGR Z E	
		Expansion coupler
1	MGR Z EX	
		Change faces Supplied with lids, lid fixings and one trunking connector fitted Not available in multi-compartment Only available in IP4X screwfix or tamperproof versions For non square size options see p. 25
		Left hand – square sizes only
1	MSIP Z CLH	
		Right hand – square sizes only
1	MSIP Z CRH	
		Fitting to fitting adaptors Supplied with lid and lid fixings
1	MGR Z FA	

Key : Z = trunking size code
Replace Z with the relevant code (see p. 10)

Note : 3 compartment trunking is available in size codes 32 (75 mm wide) and above