

# BENCH TRUNKING ALUMINIUM

Bench trunking aluminium is a robust angled trunking that can be mounted directly on to desks, work benches or fitted under shelving.

## Product information

- 105 x 105mm
- Suitable for desk, bench or worktop applications
- Can be subdivided
- Fully compatible with Sterling flush power and data accessories
- Aluminium systems specified with polycarbonate fittings meet accepted requirements for LSOH

## Data information

- Compliant up to Cat 7a
- Adjustable data box 32-40mm
- Screened divider and data boxes

**Note:** Allowance must be made for earthing the trunking system to comply with the current version of the BS 7671 Wiring Regulations.



Can be subdivided



## Part M

For 1 and 2 gang box assemblies with coloured flush plates to comply with Part M please refer to page 54.



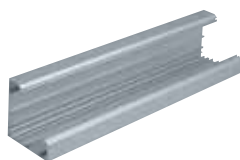
## #Data fittings

For made to order fittings to meet Cat 7a requirements please contact our Technical Team on +44 (0)1424 856688

## Standard Colours

WH	SG
WH: White	SG: Silver Grey

**Colour code suffix:** to indicate the finish you require, add the required colour code to the end of the product code.



## Base unit

code	size	pack
MBTAB105SG	105 x 105mm	1 x 3m



## Cover

code	material	pack
MBTAL105SG	aluminium	1 x 3m
ETL1WH	PVC-U	8 x 3m

## Aluminium base and PVC-U cover

Our PVC-U cover is compatible with our aluminium base. Order ETL1WH PVC-U cover

## Basic components

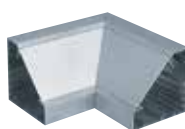
## Fittings



## End cap (steel)

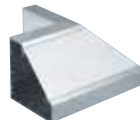
code	pack
BECA105SG	1

with fixing screws



## Internal angle (aluminium)

code	pack
BIAA105SG	1



## External angle (aluminium)

code	pack
BEAA105SG	1

p267

Technical Information

## Components

**Dividing fillet (PVC-U)**

code	description	pack
BDF105WH	4 x 3m	

**Earth bonding kit**

code	description	pack
LBT3		1

**Coupler pin**

code	description	pack
LDP1	ø2.0 x 20mm	10

To aid alignment of base profiles

**Bonding strap**

code	description	pack
LBS1	base to base 32 amp	5

**Bonding strap**

code	description	pack
LBS2	cover to base	5

**Bonding strap**

code	description	pack
LBS3	end cap to base	1

## Boxes and plates (polycarbonate)

**RCD/MCB housing**

code	description	pack
EAHCA1MWH	polycarbonate	1

Not available in silver grey.

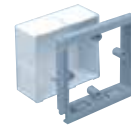
\*Up to 4 modules can be accommodated.

**Note:** RCDs and MCBs are not supplied by Marshall-Tufflex.**1 gang accessory box 30mm deep**

code	description	pack
ESSB1SG		1
ESSBA1WH		1

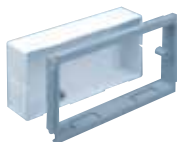
**2 gang accessory box 30mm deep**

code	description	pack
ESSB2SG		1
ESSBA2WH		1

**1 gang adjustable depth box**

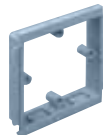
code	depth	pack
EAB1SG	32-47mm	1

Please see page 261 for more information on the range of adjustable boxes

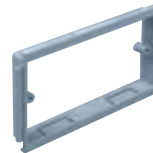
**2 gang adjustable depth box**

code	depth	pack
EAB2SG	32 – 47mm	1

Please see page 261 for more information on the range of adjustable boxes

**1 gang accessory plate**

code	description	pack
ESSP1SG		2

**2 gang accessory plate**

code	description	pack
ESSP2SG		2

## Screened boxes

**1 gang screened accessory box (polycarbonate)**

code	depth	pack
ESSBA1SWH	30mm	20

**2 gang screened accessory box (polycarbonate)**

code	depth	pack
ESSBA2SWH	30mm	10

**Screening**

Conductive spray (CS) is unique to Marshall-Tufflex and is applied in the factory to assist with screening from electromagnetic interference to data and communications cabling within trunking systems. The coating is applied to a range of data boxes, covers, clip-on components and fabricated fittings.

**WARNING:** A CS coating is not suitable for low voltage circuits. As per the current version of BS 7671 wiring regulations. For data/voice use only.