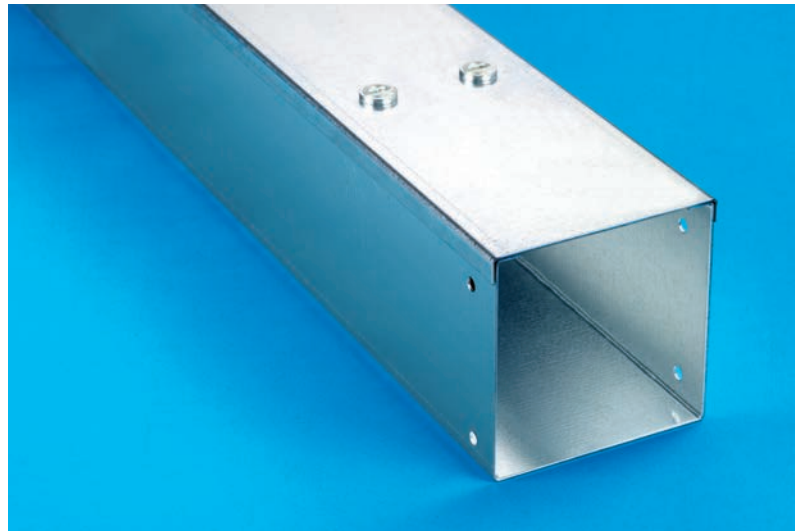
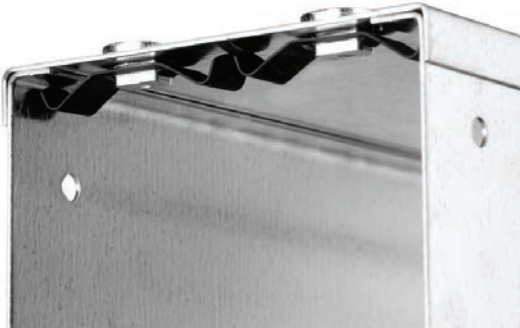


# STANDARD TRUNKING

## Single-Compartment Trunking



Trunking Size (mm) Width x Depth	Product Code	
	3m Length	2m Length
50 x 25	TL3/21	TL2/21
50 x 40	TL3/240	TL2/240
50 x 50	TL3/22	TL2/22
75 x 25	TL3/31	TL2/31
75 x 40	TL3/340	TL2/340
75 x 50	TL3/32	TL2/32
75 x 75	TL3/33	TL2/33
100 x 25	TL3/41	TL2/41
100 x 40	TL3/440	TL2/440
100 x 50	TL3/42	TL2/42
100 x 75	TL3/43	TL2/43
100 x 100	TL3/44	TL2/44
150 x 25	TL3/61	TL2/61
150 x 40	TL3/640	TL2/640
150 x 50	TL3/62	TL2/62
150 x 75	TL3/63	TL2/63
150 x 100	TL3/64	TL2/64
150 x 150	TL3/66	TL2/66
200 x 25	TL3/81	TL2/81
200 x 40	TL3/840	TL2/840
200 x 50	TL3/82	TL2/82
200 x 75	TL3/83	TL2/83
200 x 100	TL3/84	TL2/84
200 x 150	TL3/86	TL2/86
200 x 200	TL3/88	TL2/88
225 x 25	TL3/91	TL2/91
225 x 40	TL3/940	TL2/940
225 x 50	TL3/92	TL2/92
225 x 75	TL3/93	TL2/93
225 x 100	TL3/94	TL2/94
225 x 150	TL3/96	TL2/96
225 x 200	TL3/98	TL2/98
225 x 225	TL3/99	TL2/99
300 x 25	TL3/121	TL2/121
300 x 40	TL3/1240	TL2/1240
300 x 50	TL3/122	TL2/122
300 x 75	TL3/123	TL2/123
300 x 100	TL3/124	TL2/124
300 x 150	TL3/126	TL2/126
300 x 200	TL3/128	TL2/128
300 x 225	TL3/129	TL2/129
300 x 300	TL3/1212	TL2/1212

## Specifications

### British Standard

Complies with BS EN 50085.

### FULL TECHNICAL SUBMITTAL AVAILABLE ON REQUEST

### Standard Finish

Galvanised to BS EN 10346.

Code Suffix /G.

### Special Finish

Epoxy Powder coated to BS 4800 in colour of your choice.

Please state Colour Code when ordering.

Code Suffix /EP.

### Standard Length

3.0 metres

### Special Length

2.0 metres

Each length comprises of trunking body, trunking lid (see below), 1 pair of couplers, 8 x (M5 x 8 screw and nut).

Trunking up to 150mm wide - 3m lid.

Trunking 200mm - 300mm wide - 2 x 1.5m lid.

All 2m trunking lengths have 2m lid.

Lid is secured by turnbuckle fasteners.

Earth continuity link must be ordered separately if required.

## Screw Fixed Trunking

- Screw fixed trunking is fastened using a M5 pan head screw or security screw.
- Screw fixed trunking is only available to order.
- Specification is as per turnbuckle trunking.
- Order details - substitute T with S on all product codes.

