

# XL301 AND XL302 ALUMINIUM

XL aluminium trunking 301 and 302 are deep, 3-compartment systems that provide extra capacity and screening performance levels for data cabling.

## Product information

- 220 x 65mm
- 3 deep segregated compartments
- Compartments can be subdivided
- Suitable for dado and skirting applications (XL301 is recommended for dado application only)
- Includes a range of polycarbonate clip-on fittings with built-in overlaps
- Fully compatible with Sterling flush power and data accessories
- Aluminium systems specified with polycarbonate fittings meet accepted requirements for LS0H

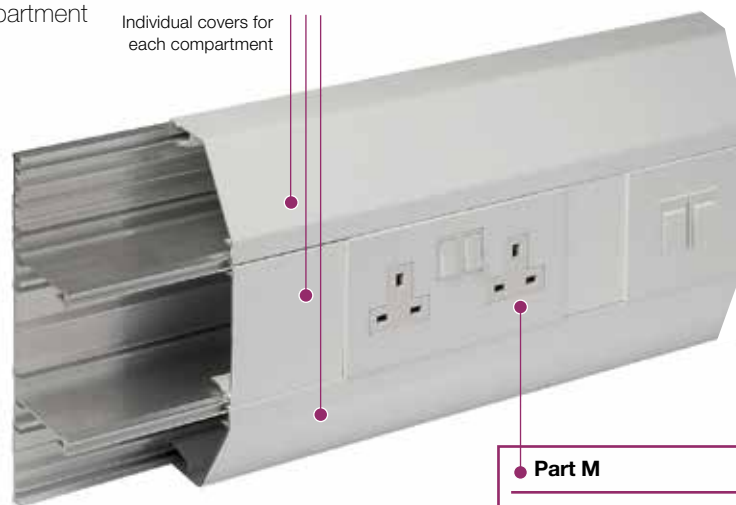
## Data information

- Compliant up to Cat 7a\*
- Data compliant 25mm and 50mm bend radius
- External bends feature internal segregators
- Adjustable data box 32mm - 47mm
- Screened divider and data boxes

**Note:** Allowance must be made for earthing the trunking system to comply with the current version of the BS 7671 Wiring Regulations.

Standard Colour
SG
SG: Silver Grey

**Colour code suffix:** to indicate the finish you require, add the required colour code to the end of the product code.



Individual covers for each compartment

See page 173 for quick reference chart

## Part M

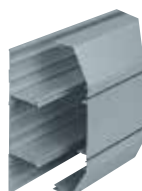
For 1 and 2 gang box assemblies with coloured flush plates to comply with Part M please refer to page 54.



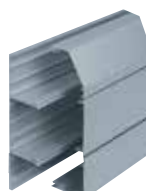
## \*Data fittings

For made to order fittings to meet Cat 7a requirements please contact our Technical Team on +44 (0)1424 856688

## Trunking profiles



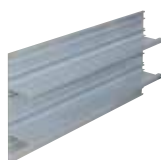
**XL301**  
size 220 x 65mm



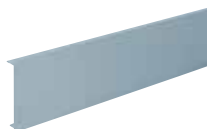
**XL302**  
size 220 x 65mm

For dado installation only

## Basic components



**Base unit**  
code ELTB300 pack 2 x 3m



**Main compartment cover**  
code LTL1SG pack 1 x 3m



**Angled cover**  
code ELAC300SG pack 1 x 3m



**Square cover**  
code ELSC300SG pack 1 x 3m

p272

Technical Information

## XL301 fittings



**XL301  
Coupler**

code	description	pack
EC301SG	polycarbonate	1



**XL301  
End cap**

code	description	pack
EEC301SG	polycarbonate	1



**XL301  
Internal bend**

code	description	pack
EIB301SG	polycarbonate	1



**XL301  
External bend**

code	description	pack
EXB301SG	polycarbonate	1



**XL301  
Flat angle – up/down**

code	description	pack
EFA301SG	aluminium	1



**XL301  
Flat tee – up/down**

code	description	pack
EFT301SG	aluminium	1

## XL302 fittings



**XL302  
Coupler**

code	description	pack
EC302SG	polycarbonate	1



**XL302  
End cap**

code	description	pack
EEC302LHSG	polycarbonate	1
EEC302RHSG	polycarbonate	1

LH = Left hand RH = Right hand



**XL302  
Internal bend**

code	description	pack
EIB302SG	polycarbonate	1



**XL302  
External bend**

code	description	pack
EXB302SG	polycarbonate	1



**XL302  
Flat angle – upward**

code	description	pack
EFA302USG	aluminium	1



**XL302  
Flat angle – downward**

code	description	pack
EFA302DSG	aluminium	1

#### XL Trunking 302 flat tees

Where profiles have one angled cover and one square cover, as with XL302, it is possible to create a tee by changing the top or bottom cover so that covers match the profile of the trunking. For example:

- Upward tee – select XL301 tee remove the angled bottom cover and replace with square cover.

## Components

**Dividing fillet (PVC-U)**

code	description	pack
ELDF200	8 x 3m	

**Earth bonding kit**

code	description	pack
LBT3		1

**Coupler pin**

code	description	pack
LDP1	ø2.0 x 20mm	10

To aid alignment of base profiles

**Bonding strap**

code	description	pack
LBS1	base to base 32Amp	5

**Bonding strap**

code	description	pack
LBS2	cover to base	5

## Boxes and plates (polycarbonate)

**RCD/MCB housing**

code	description	pack
EAHCA1MWH	polycarbonate	1

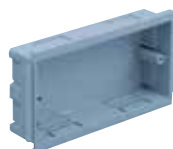
Not available in silver grey.

\*Up to 4 modules can be accommodated.

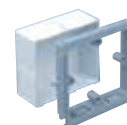
**Note:** RCDs and MCBs are not supplied by Marshall-Tufflex.

**1 gang accessory box 30mm deep (polycarbonate)**

code	description	pack
ESSB1SG		1

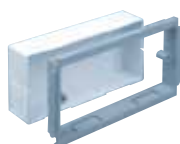
**2 gang accessory box 30mm deep (polycarbonate)**

code	description	pack
ESSB2SG		1

**1 gang adjustable depth box**

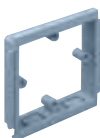
code	description	pack
EAB1SG	32-47mm	1

Please see page 261 for more information on the range of adjustable boxes

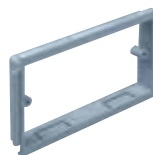
**2 gang adjustable depth box**

code	description	pack
EAB2SG	32 – 47mm	1

Please see page 261 for more information on the range of adjustable boxes

**1 gang accessory plate (polycarbonate)**

code	description	pack
ESSP1SG		2

**2 gang accessory plate**

code	description	pack
ESSP2SG		2

## Screened boxes

**1 gang screened accessory box (polycarbonate)**

code	description	pack
ESSBA1SWH	30mm	20

**2 gang screened accessory box (polycarbonate)**

code	description	pack
ESSBA2SWH	30mm	10

**Screening**

Conductive spray (CS) is unique to Marshall-Tufflex and is applied in the factory to assist with screening from electromagnetic interference to data and communications cabling within trunking systems. The coating is applied to a range of data boxes, covers, clip-on components and fabricated fittings.

**WARNING:** A CS coating is not suitable for low voltage circuits. As per the current version of BS 7671 wiring regulations. For data/voice use only.