

Wall Mounted Enclosures

Polyester Range

Accessories

Steel mounting plate, UMPZ

Description: Steel mounting plate for UCP/UCPT enclosures.
Material: 2 mm galvanized steel.
Pack quantity: 1 piece.

For enclosure		Mounting plate dimensions			Item no.
H	W	h	w		
315	215	250	150	UMPZ320	
415	315	350	250	UMPZ430	
515	415	450	350	UMPZ540	
615	415	550	350	UMPZ640	
735	535	650	450	UMPZ750	
835	635	750	550	UMPZ860	
1035	835	950	750	UMPZ1080	



Insulated mounting plate, UMPP

Description: Insulated mounting plate for UCP/UCPT enclosures.
Material: 5 mm pertinax.
Pack quantity: 1 piece.

For enclosure		Mounting plate dimensions			Item no.
H	W	h	w		
315	215	250	150	UMPP320	
415	315	350	250	UMPP430	
515	415	450	350	UMPP540	
615	415	550	350	UMPP640	
735	535	650	450	UMPP750	
835	635	750	550	UMPP860	
1035	835	950	750	UMPP1080	



Telequick mounting plate, UMPT

Description: Telequick mounting plate for UCP/UCPT enclosures.
Material: 1.5 mm perforated steel.
Pack quantity: 1 piece.

For enclosure		Mounting plate dimensions			Item no.
H	W	h	w		
315	215	250	150	UMPT320	
415	315	350	250	UMPT430	
515	415	450	350	UMPT540	
615	415	550	350	UMPT640	
735	535	650	450	UMPT750	
835	635	750	550	UMPT860	
1035	835	950	750	UMPT1080	

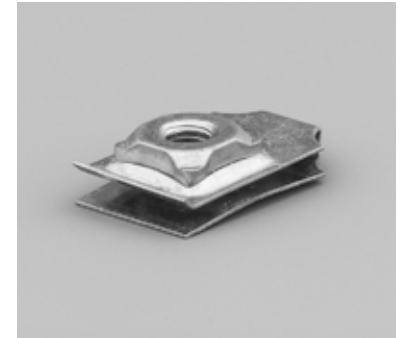


Snap nuts for telequick plates, TN

Description: Nuts to be used in the telequick mounting plates.
Pack quantity: 50 pieces.

Thread	Item no.
M 4	TN04
M 5	TN05
M 6	TN06

Not suitable for AFS.



Depth adjustment kit, UCD

Description: To provide depth adjustment for the mounting plate and other accessories.
Pack quantity: 4 pieces and mounting accessories.

Item no.
UCD01



Mounting frame, UMF

Description: For easy mounting of DIN-rail components. The DIN-rails are adjustable in height.
Material: Galvanized steel.
Delivery: Vertical profiles, reinforced DIN-rails, supporting brackets and mounting accessories.

For enclosure				
H	W	N° of modules	N° of DIN rails	Item no.
315	215	12	2	UMF3202
415	315	24	2	UMF4302
515	415	54	3	UMF5403
615	415	54	3	UMF6403
735	535	88	4	UMF7503
835	635	96	4	UMF8604
1035	835	180	5	UMF10805

