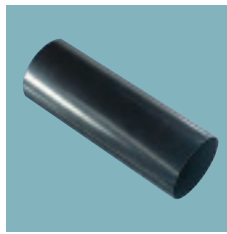


Xpelair SystemX Accessories



Spigot Plates SP

- Fixes to inside of exterior wall
- 100mm spigot diameter SP100
Ref. 89697AA
- 125mm spigot diameter SP125
Ref. 89698AA
- 150mm spigot diameter SP150
Ref. 89699AA
- 200mm spigot diameter SP200
Ref. 89700AA
- 250mm spigot diameter SP250
Ref. 89701AA
- 315mm spigot diameter SP315
Ref. 89702AA



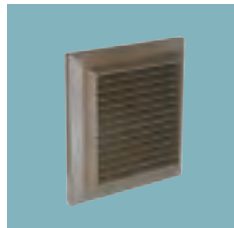
Wall Ducts WD

- For bridging cavities or lining solid exterior walls
- 100mm duct diameter WD100
Ref. 89543AA
- 125mm duct diameter WD125
Ref. 89703AA
- 150mm duct diameter WD150
Ref. 89704AA
- 200mm duct diameter WD200
Ref. 89705AA
- 250mm duct diameter WD250
Ref. 89706AA
- 315mm duct diameter WD315
Ref. 89707AA



Louvred Wall Grille White

Dia
LGW125 125mm Ref. 91492AA



Louvred Wall Grille Brown

Dia
LGB125 125mm Ref. 91493AA



Circular Air Valves CAV

Dia
CAV100 100mm Ref. 89682AA
CAV125 125mm Ref. 91490AA
CAV150 150mm Ref. 89683AA

- Valve has adjustable centre disc
- For use with XID100, XID125 and XID150
- Flexible ducting (FD) can be terminated at the valve



Circular Air Valve with Fire Damper

Dia
CAV125FD 125mm Ref. 91495AA

- Valve includes built in fire damper for use in kitchens
- Valve has adjustable centre disc and can be used as outlet for XID125 and Xplus
- Tested to BS476 Part 20 - provides 1 hour fire check

