

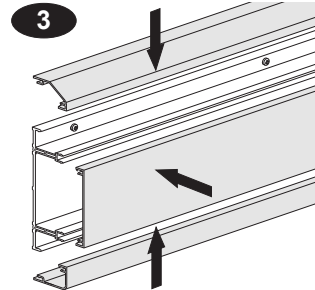
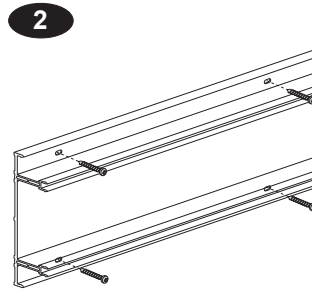
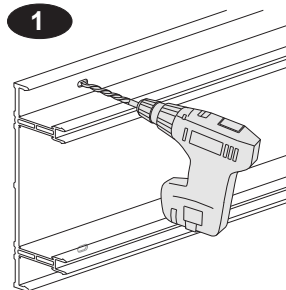
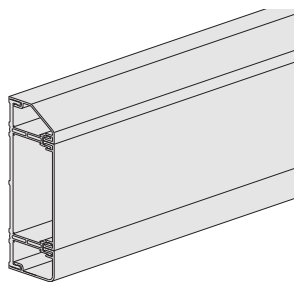
Mita Cableline 40

CL3W
CP3W
CS3W

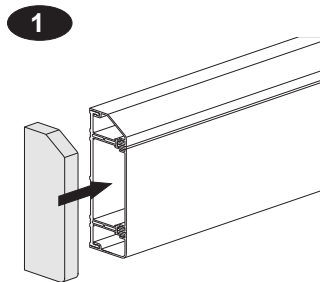
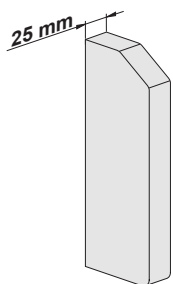
145 x 40 mm

Schneider
Electric

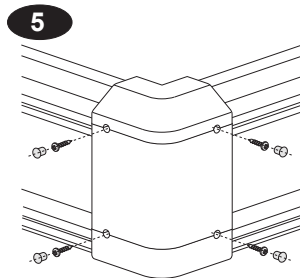
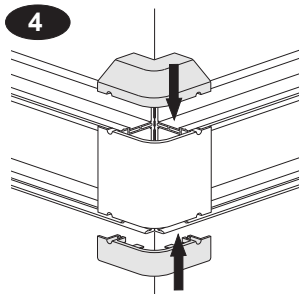
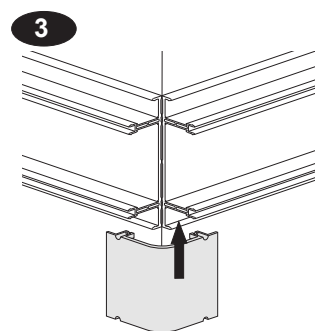
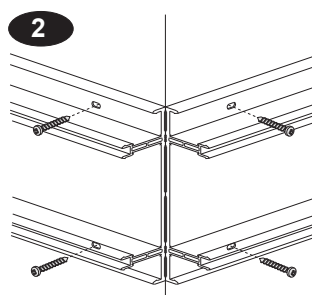
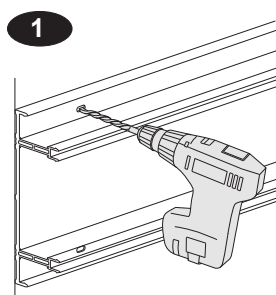
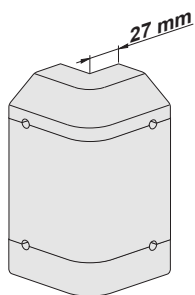
Installation



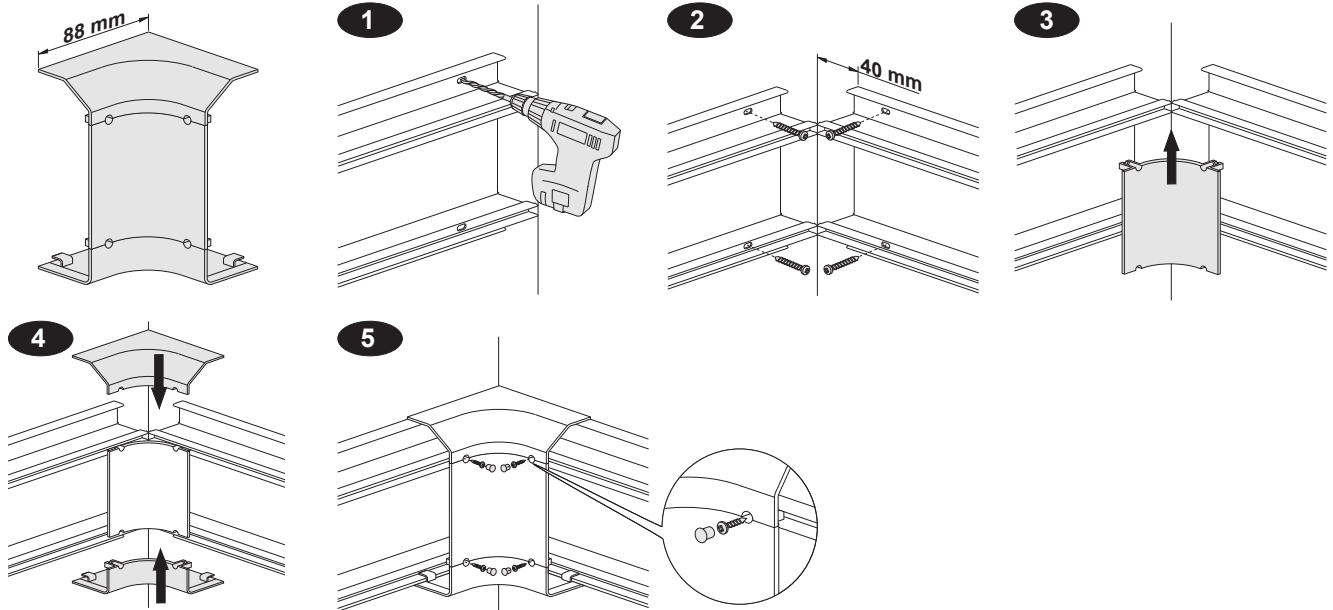
Installation of end cap



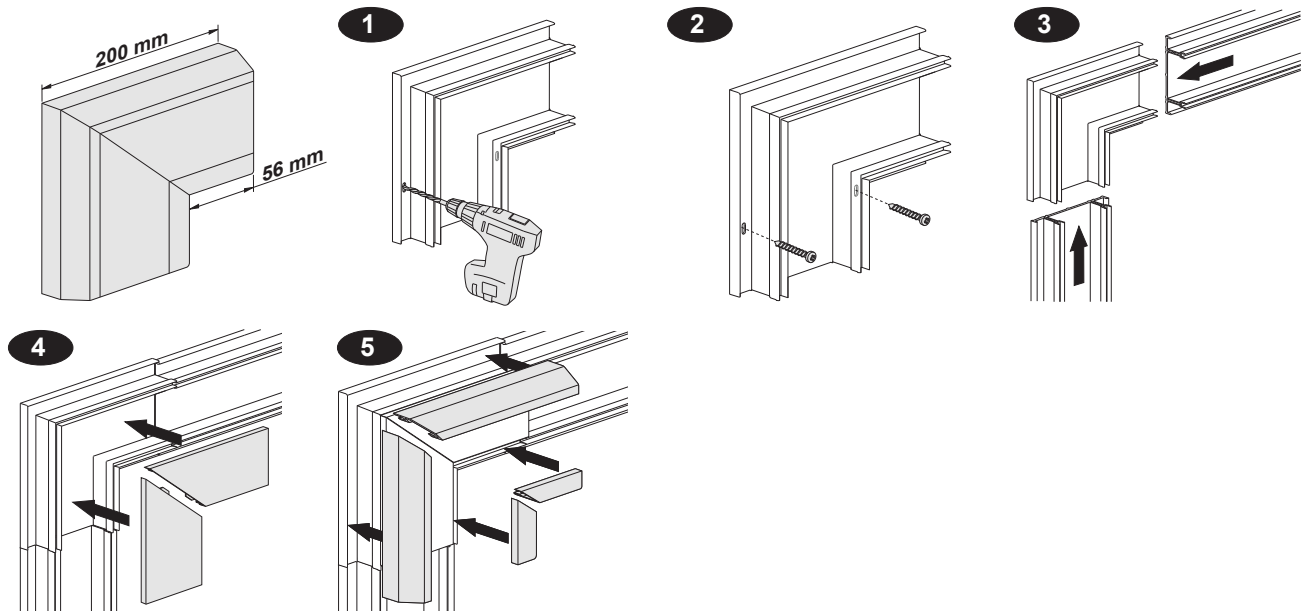
Installation of external angle



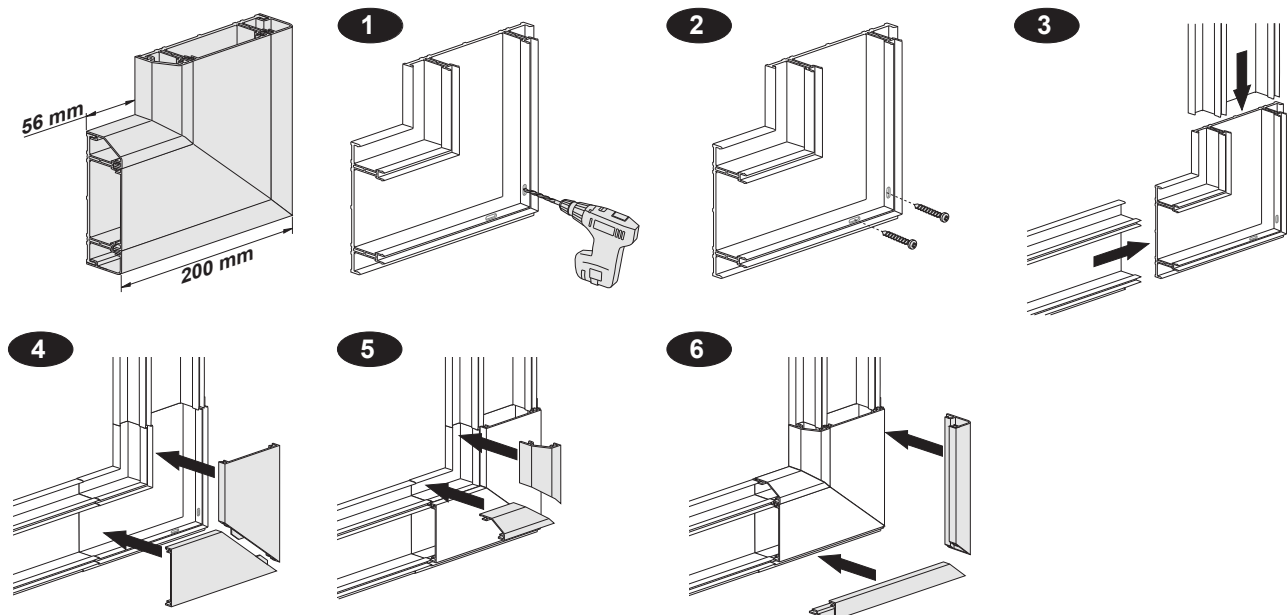
Installation of internal angle



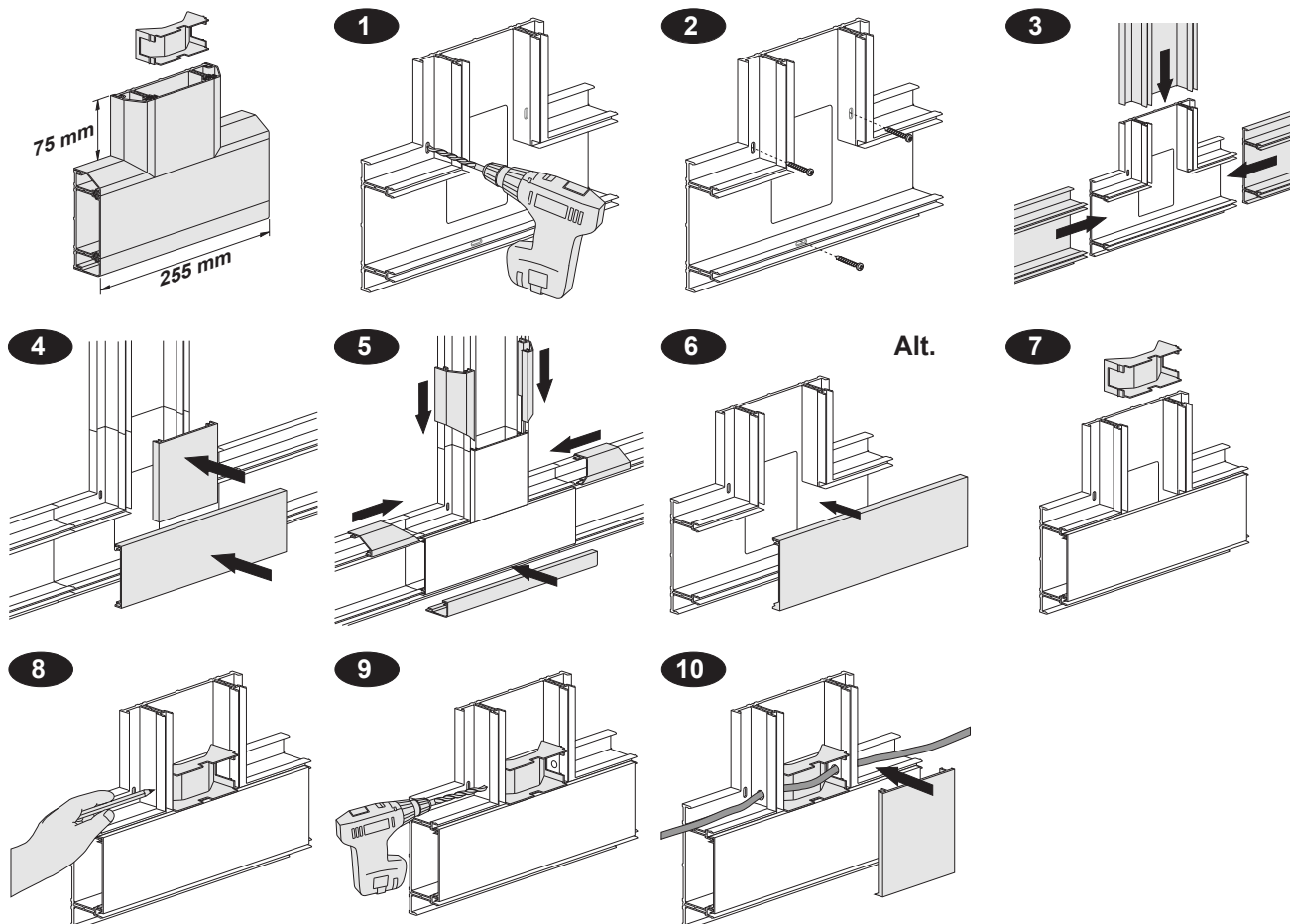
Installation of flat angle dropper



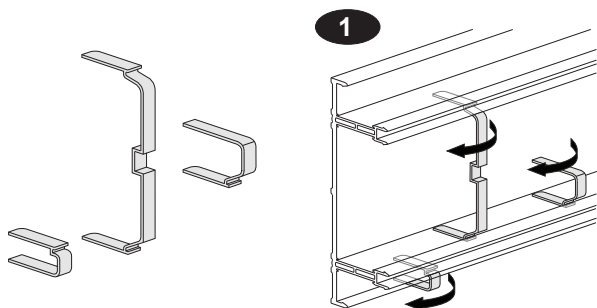
Installation of flat angle riser



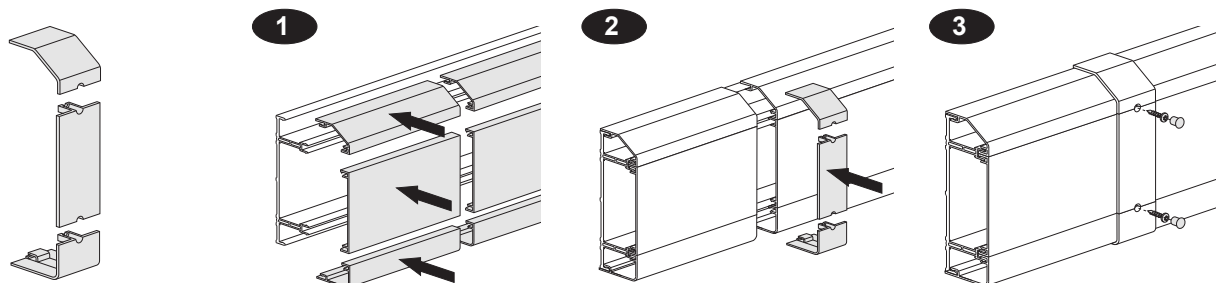
Installation of flat tee



Installation of cable retainers



Installation of joint cover



Thermal expansion

uPVC is subject to thermal expansion and contraction, therefore care should be taken to ensure that trunkings are adequately supported along their length and are not rigidly fixed to any base support or structure. Fixing holes should be made oversize and screws should not be over tightened. A gap should be left between adjoining lengths to allow for expansion, 2-3 mm will be sufficient for most needs but where extremes of temperature change are possible, a gap of 6 mm should be left.

