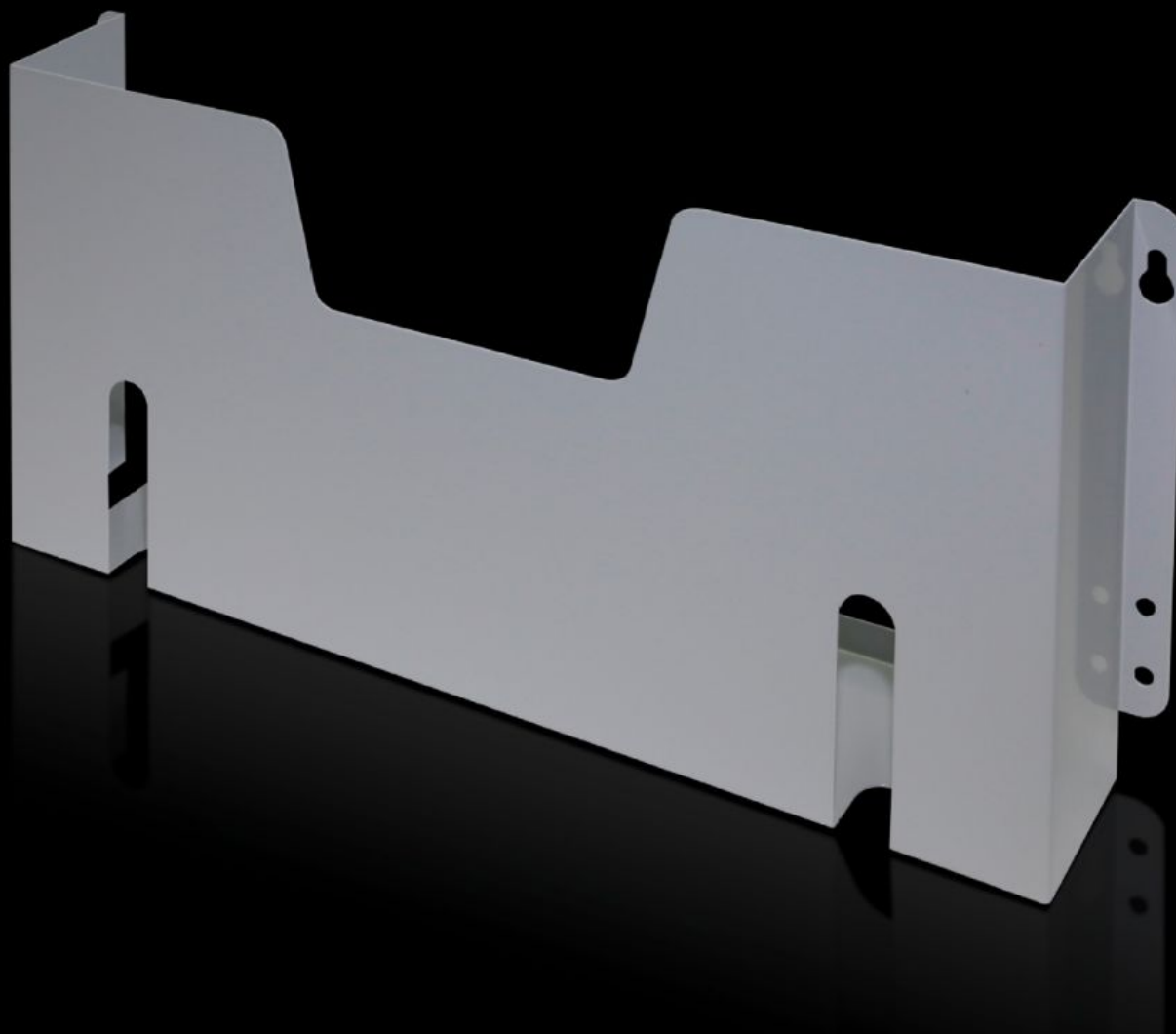


# Rittal – The System.

Faster – better – everywhere.



## SZ 4116.000

## Wiring plan pocket of sheet steel

State: 20/09/2023 (Source: [rittal.com/uk-en](https://www.rittal.com/uk-en))

ENCLOSURES

POWER DISTRIBUTION

CLIMATE CONTROL

IT INFRASTRUCTURE

SOFTWARE & SERVICES

FRIEDHELM LOH GROUP



# SZ 4116.000 - Wiring plan pocket of sheet steel for VX, TS, VX SE, PC, TP pedestal

For fastening to tubular door frames at any height.

## Features

Model No.	SZ 4116.000
Product description	For fastening to tubular door frames at any height.
Colour	RAL 7035
Supply includes	Assembly parts
Clearance height	210 mm
Clearance width	455 mm
To fit door width	600 mm
Dimensions	Depth: 90 mm
Packs of	1 pc(s).
Weight/pack	2.16 kg
Customs tariff number	73269098
EAN	4028177091818
ETIM 7.0	EC000317
ECLASS 8.0	27189267

## Approvals

Approvals	GOST
-----------	------