

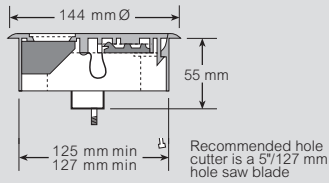
# floor grommets

## technical information

### ■ 144 mm Ø plastic floor grommet

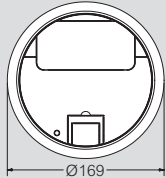
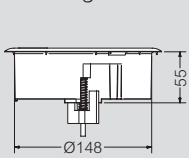
#### Dimensions

144 mm grommet  
EG0010



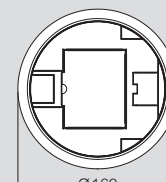
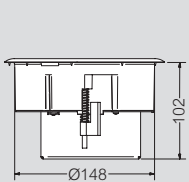
### ■ 169 mm Ø plastic floor grommets

#### Access grommet



Cat. No. EG0030

#### Power grommet

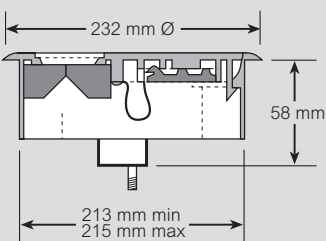


Recommended hole cutter is a 6 1/8\"/>

### ■ 232 mm Ø plastic floor grommet

#### Dimensions

Large quick fit grommet  
Cat. No. EG0055

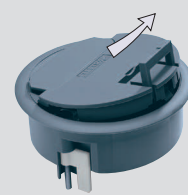


Floor panel cut-out diameter

Recommended hole cutter is a adjustable hole saw blade with Ø range of 40 mm - 300 mm

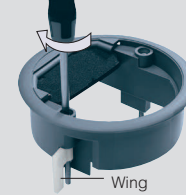
### ■ To install plastic floor grommet

A



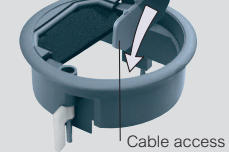
Lift handle and pull to remove lid

B



Push grommet into raised floor tile aperture  
Push down spring loaded screws and rotate quarter turn to secure  
Ensure wings are located under floor panel  
For honeycombed floor panels one wing should face downwards and one wing should face upwards

C



Drop cable access insert into housing opening

D



Slide lid into lug holes

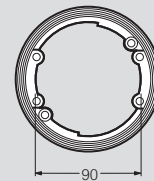
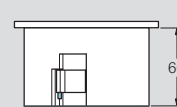
E



(1) Push down lid to close  
(2) If grommet is not in use, replace cable access insert

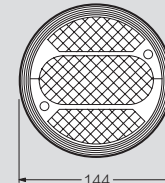
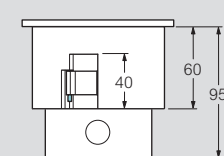
### ■ 144 mm Ø aluminium grommets

#### Access grommet



Cat. No. EG0015

#### 13 A power grommet



Cat. No. EG0025

Recommended hole cutter is a 5 1/8\"/>