

Read these instructions before commencing installation & retain them for future reference.

IP65

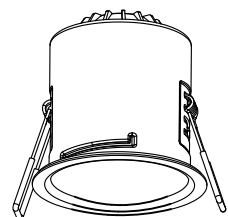
## Changing the Tilt Bezel:

**Step 1:**  
Hold the 'can' of the downlight securely, avoid putting pressure on the retaining springs against the bezel.  
Twist the bezel anti-clockwise for a quarter turn, this should allow the rim and LED module to drop from the 'can' of the fixture.

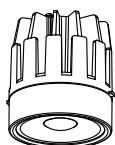
**Step 2:**  
Without putting strain on the connecting cable, securely hold the LED module/heat sink and twist the bezel anti-clockwise to release it.

**Step 3:**  
Complete steps 2 then 1 twisting the components back into place in a clockwise direction. do not over tighten the two parts, once resistance is felt this should be sufficient to complete the bezel changeover. Ensure all seals and gaskets are situated correctly before installing the luminaire.

Please refer to the luminaire installation guidelines to complete the installation of your Q10 Tilt Downlight.



Luminaire 'Can'

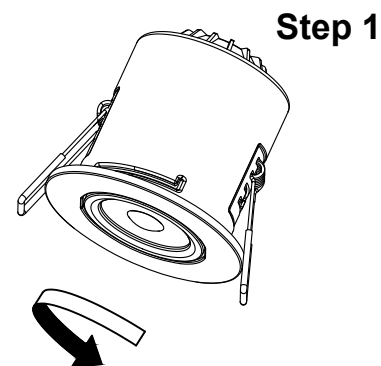


LED Module/Heatsink

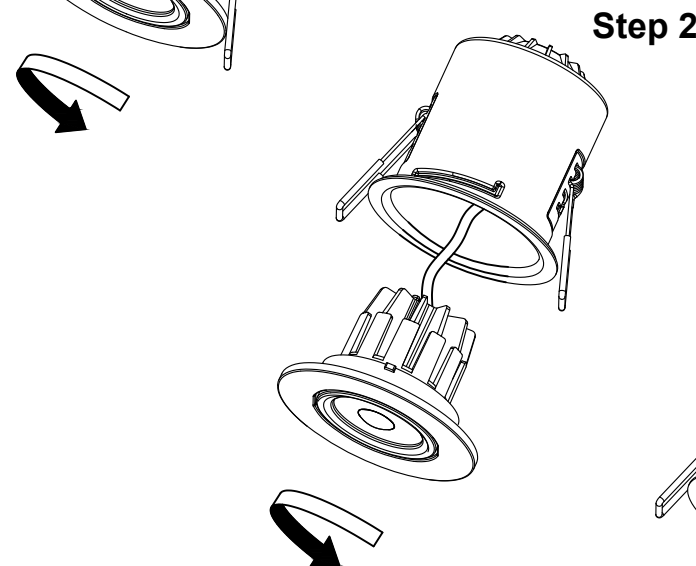


Bezel

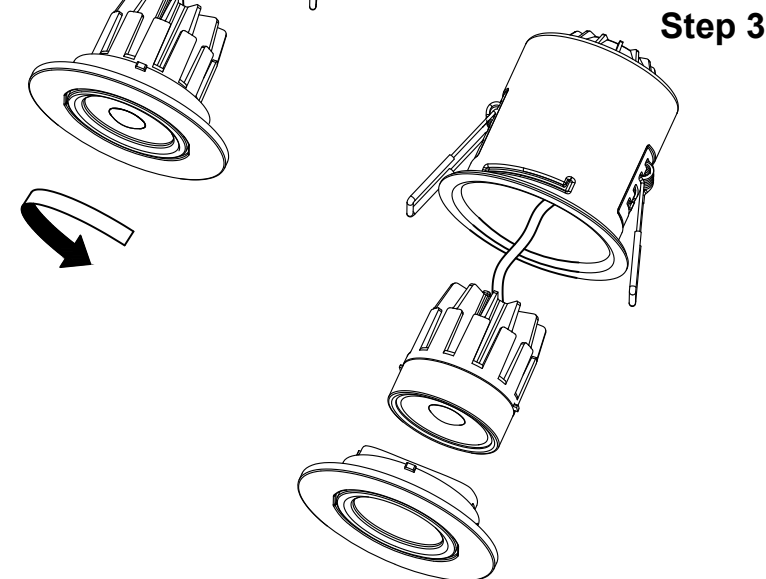
	ØRim Size
KSRFRD363-5	85mm



Step 1



Step 2



Step 3



KSR Lighting Aftersales: 023 92 674343  
E-mail: [aftersales@ksrlighting.com](mailto:aftersales@ksrlighting.com)