

CorePro LED PLT 4P



CorePro LED PLT HF 15W 830 4P GX24q-3

The CorePro LED PLT 4P integrates a LED light source into a traditional fluorescent form factor. This product is the ideal solution for uplampping in general lighting applications: it meets basic lighting requirements, offers significant energy savings, and is environmentally friendly.

Product data

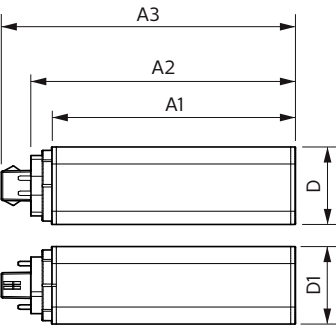
General Information		Input frequency	
Cap base	GX24Q-3 [GX24q-3]	Power Consumption	15 W
Nominal lifetime	30,000 h	Starting time (nom.)	0.5 s
Switching Cycle	200,000	Warm-up time to 60% light	0.5 s
Lighting Technology	LED	Power Factor (Fraction)	0.9
Flux measurement reference	Sphere	Voltage (nom.)	20-60 V
CE mark	Yes	LED alternative to fluorescent lamp power	32 W
EU RoHS compliant	Yes	Temperature	
Light Technical		Ambient temperature range	-20°C to 35°C
Colour Code	830 [CCT of 3000K]	T-Case maximum (nom.)	70 °C
Beam angle (nom.)	120 degree(s)	Controls and Dimming	
Luminous Flux	1,620 lm	Dimmable	No
Colour designation	White (WH)	Mechanical and Housing	
Correlated Colour Temperature	3000 K	Lamp Finish	Frosted
Luminous efficacy (rated) (nom.)	108 lm/W	Bulb material	Plastic
Colour consistency	<6	Product length	200 mm
Colour rendering index (CRI)	82	Bulb shape	Tube, single-ended
LLMF at end of nominal lifetime (nom.)	70 %	Approval and Application	
Photobiological safety according to EN 62471	RG1	Energy Efficiency Class	F
Operating and Electrical			
Line Frequency	20K-80K Hz		

CorePro LED PLT 4P

Energy-saving product	Yes
Approval marks	RoHS compliance TUV CE marking KEMA Keur certificate
Energy consumption kWh/1,000 hours	15 kWh
EPREL registration number	1361424
Product Data	
Full EOC	871951448784000
Order product name	CorePro LED PLT HF 15W 830 4P GX24q-3

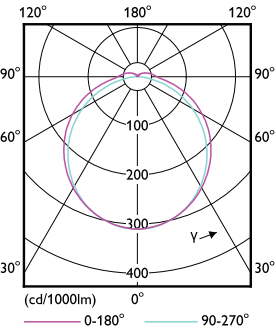
Order code	48784000
SAP numerator – quantity per pack	1
Numerator – packs per outer box	20
Material no. (12 NC)	929003576702
Full product name	CorePro LED PLT HF 15W 830 4P GX24q-3
EAN/UPC - Case	8719514487857
EAN/UPC - Product/Case	8719514487840

Dimensional drawing

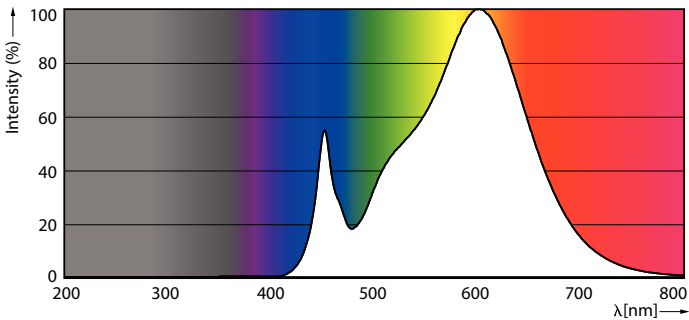


Product	D1	D2	A1	A2	A3
CorePro LED PLT HF 15W 830 4P GX24q-3	42 mm		129 mm	141 mm	156 mm

Photometric data



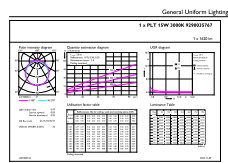
Light Distribution Diagram



Spectral Power Distribution Colour

CorePro LED PLT 4P

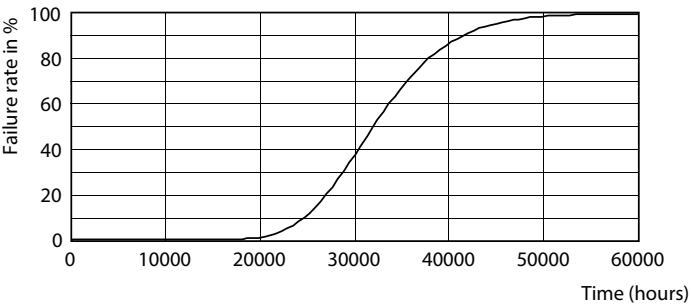
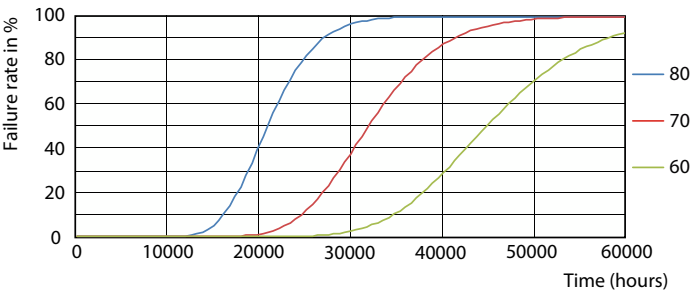
Photometric data



General Uniform Lighting - CorePro LED PLT HF 15W 830 4P GX24q-3

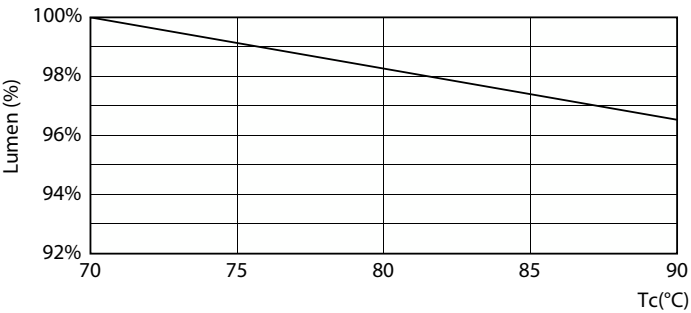
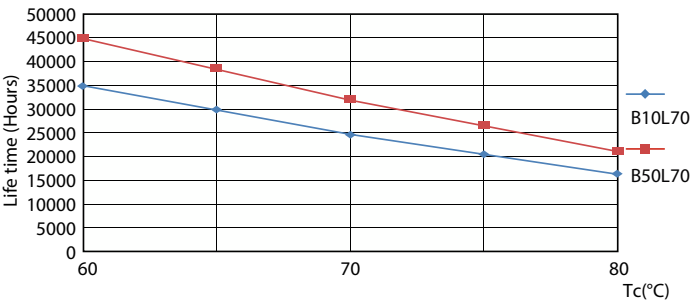
General uniform lighting - CorePro LED PLT HF 15W 830 4P GX24q-3

Lifetime



Life Expectancy Diagram

Life Expectancy Diagram - CorePro LED PLT HF 15W 830 4P GX24q-3



Life Expectancy Diagram

Lumen Maintenance Diagram

CorePro LED PLT 4P

Lifetime



Lumen Maintenance Diagram - CorePro LED PLT HF 15W 830 4P GX24q-3

