



# CorePro LED PLS



## CorePro LED PLS 5W 830 2P G23

The Philips CorePro LED PLS integrates a LED light source into a traditional fluorescent form factor. This product is the ideal solution for uplamping in general lighting applications: it meets basic lighting requirements, offers significant energy savings and is environmentally friendly.

### Product data

General Information	
Cap base	G23 [G23]
Nominal lifetime	30,000 h
Switching Cycle	50,000
Lighting Technology	LED
Flux measurement reference	Sphere
CE mark	Yes
EU RoHS compliant	Yes

Light Technical	
Colour Code	830 [CCT of 3000K]
Beam angle (nom.)	120 degree(s)
Luminous Flux	520 lm
Colour designation	White (WH)
Correlated Colour Temperature	3000 K
Luminous efficacy (rated) (nom.)	104.00 lm/W
Colour consistency	<6
Colour rendering index (CRI)	82
LLMF at end of nominal lifetime (nom.)	70 %
Photobiological safety according to EN 62471 RGO	

Operating and Electrical	
Line Frequency	50 to 60 Hz

Input frequency	50 to 60 Hz
Power Consumption	5 W
Starting time (nom.)	0.5 s
Warm-up time to 60% light	0.5 s
Power Factor (Fraction)	0.9
Voltage (nom.)	220-240 V
LED alternative to fluorescent lamp power	11 W

Temperature	
Ambient temperature range	-20°C to 45°C
T-Case maximum (nom.)	83 °C

Controls and Dimming	
Dimmable	No

Mechanical and Housing	
Bulb material	Plastic
Product length	170 mm
Bulb shape	Tube, single-ended

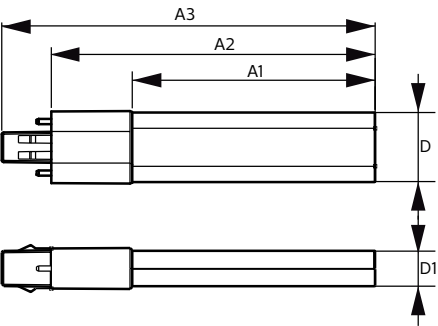
Approval and Application	
Energy Efficiency Class	F
Energy-saving product	Yes

CorePro LED PLS

Approval marks	TUV CE marking RoHS compliance KEMA Keur certificate
Energy consumption kWh/1,000 hours	5 kWh
EPREL registration number	403566
Product Data	
Full EOC	871869959666800
Order product name	CorePro LED PLS 5W 830 2P G23
Order code	59666800

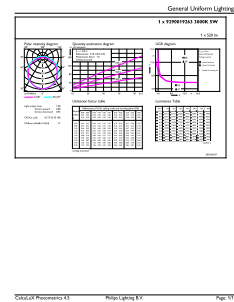
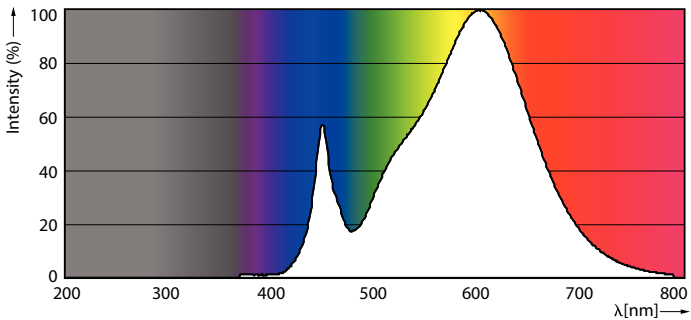
SAP numerator – quantity per pack	1
Numerator – packs per outer box	20
Material no. (12 NC)	929001926302
Full product name	CorePro LED PLS 5W 830 2P G23
EAN/UPC – Case	8718699596675
EAN/UPC – Product/Case	8718699596668

Dimensional drawing



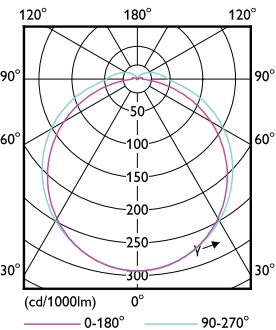
Product	D	D1	A1	A2	A3
CorePro LED PLS 5W 830 2P G23	31.1 mm	15.8 mm	108 mm	144 mm	166 mm

Photometric data



Spectral Power Distribution Colour - CorePro LED PLS 5W 830 2P G23

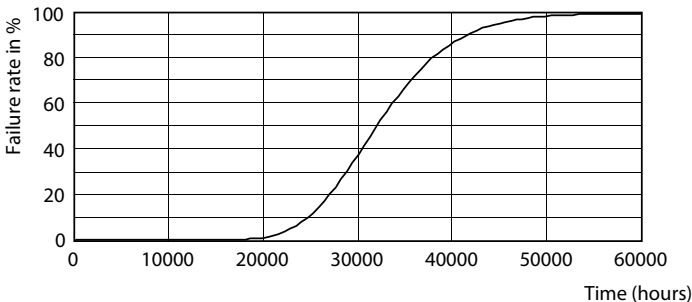
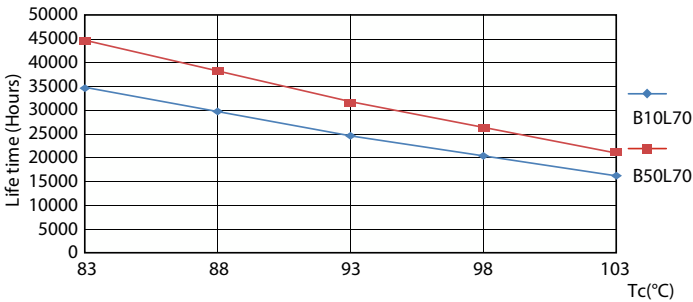
General uniform lighting - CorePro LED PLS 5W 830 2P G23



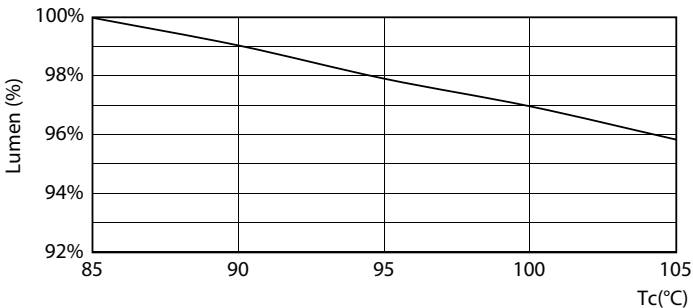
Light Distribution Diagram - CorePro LED PLS 5W 830 2P G23

CorePro LED PLS

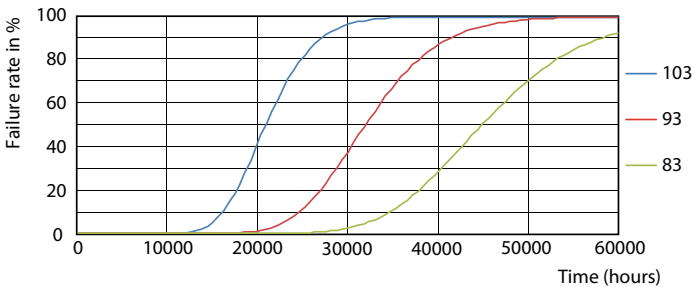
Lifetime



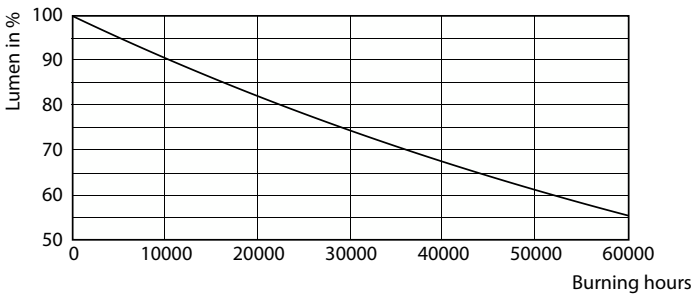
Life Expectancy Diagram - CorePro LED PLS 5W 830 2P G23



Life Expectancy Diagram - CorePro LED PLS 5W 830 2P G23



Lumen Maintenance Diagram - CorePro LED PLS 5W 830 2P G23



Life Expectancy Diagram - CorePro LED PLS 5W 830 2P G23

Lumen Maintenance Diagram - CorePro LED PLS 5W 830 2P G23

