

H2 PRO 550 T

EMERGENCY ASSEMBLY

INSTALLATION INSTRUCTIONS

Isolate mains before starting installation

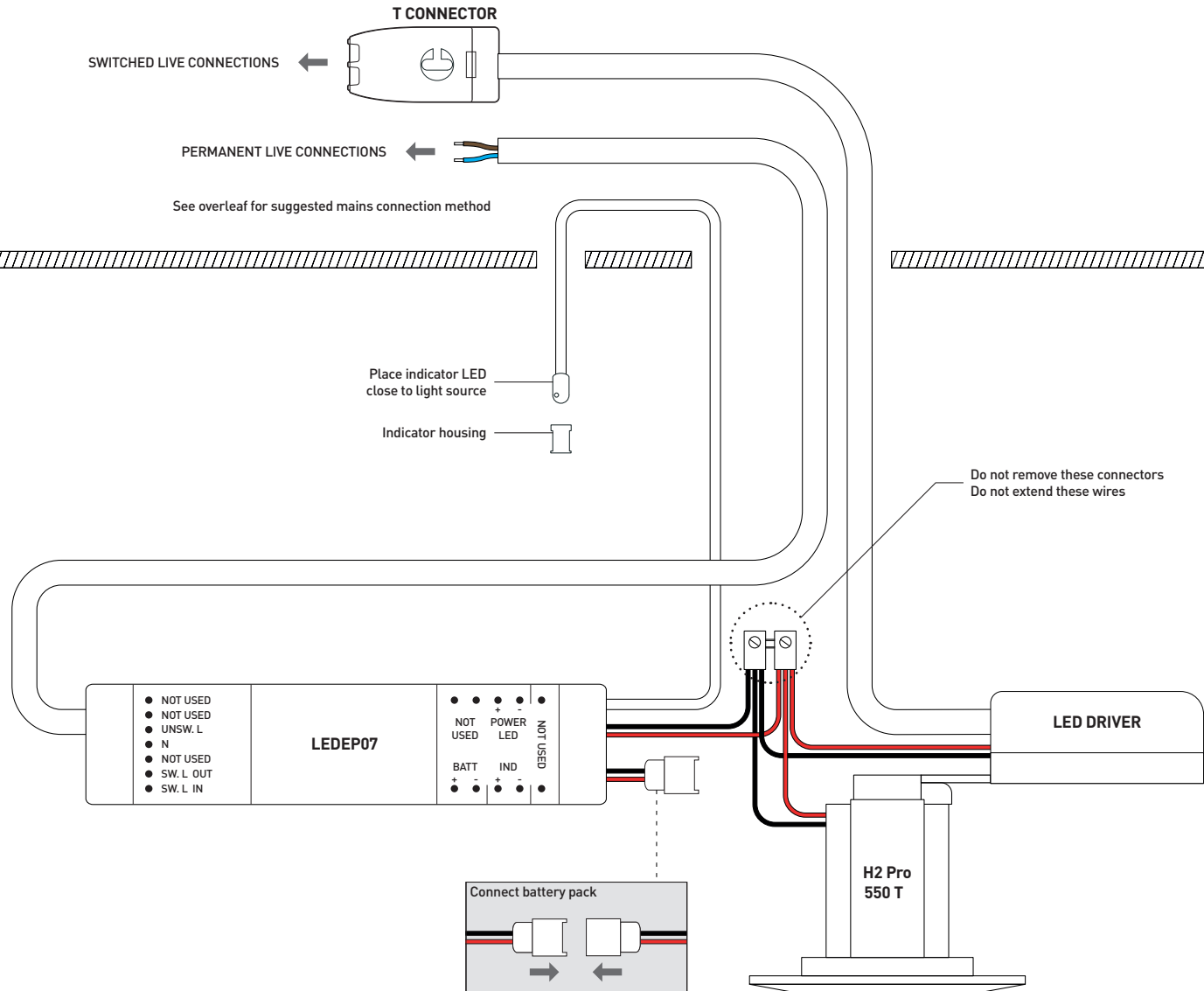
1. Cut the ceiling holes for each LED unit, Ø64-72mm.
2. For each emergency lighting position, drill a 8mm hole close to the downlight hole. This is for the emergency pack LED charge indicator.
3. Refer to the H2 Pro 550 T installation data overleaf for installation data.
4. Connect to mains supply - refer to mains wiring diagram overleaf.
5. Connect the battery pack to the LEDEP07 by plugging together the two small white connectors.
6. Feed the emergency pack through the hole into the ceiling void.
7. Remove the housing from the LED charge indicator. Feed the indicator down through the 8mm hole.
8. Refit the indicator housing and press the housing into the ceiling.
Note - If the drilled hole is slightly bigger than 8mm, it may be necessary to apply a little adhesive to the housing to secure it.
9. Feed the LED driver through the hole into the ceiling void.
10. Fit the LED unit into the ceiling.

Emergency Pack Commissioning

- Install unit in ceiling according to the instructions.
- Provide an uninterrupted mains power supply for 24 hours.
- Check that the indicator LED light is lit. This confirms that the batteries are charging.
- Remove the mains supply – the lamp will operate under battery power for 3 hours minimum.
- Restore mains power to the unit, check light functions correctly.

Note

- In normal operation, the green LED will be constantly lit to indicate that the battery is charging. If the green LED is ever not lit, investigate immediately and rectify the fault.
- Periodic testing of the unit must be performed in line with the appropriate regulations.



t +44 (0) 1604 495 151 f +44 (0) 1604 495 095
e sales@collingwoodgroup.com w collingwoodlighting.com



t +33 (0) 4 816 816 10 f +33 (0) 4 816 816 11
e ventes@collingwoodgroup.com w collingwoodlighting.com



t +49 (0) 89 411123 777 f +49 (0) 89 411123 778
e verkauf@collingwoodgroup.com w collingwoodlighting.com

Collingwood Lighting, Brooklands House, Sywell Aerodrome, Sywell, Northampton NN6 0BT, United Kingdom

HLI 1125 V2



COLLINGWOOD
LIGHTING

H2 PRO 550 T

EMERGENCY ASSEMBLY

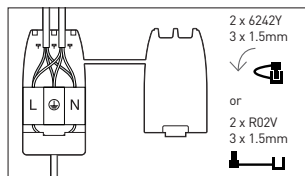
INSTALLATION INSTRUCTIONS

Installation data

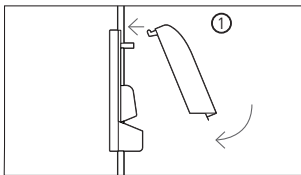
- Isolate the mains supply, prior to wiring.
- This unit must be wired by a qualified electrician or suitable competent person.
- Rated voltage 220-240V AC.
- Input current 0.03A.
- For dimming, a dimmer or dimming system suitable for electronic LED Drivers must be used.
- H2 Pro 550 T is not compatible with auto detect dimming functions. Auto detect must be switched off or disabled.
- Collingwood Lighting advises the following maximum loads to assist functionality of the dimming driver when used with suitable standard mains wall dimmers.
 - 8 x units on a 250W dimmer
 - 16 x units on a 500W dimmer
 - 24 x units on a 1000W dimmer
- For better dimming performance, use dimmers which have been designed for electronic LED drivers, e.g.
 - Collingwood DM298 - Min 1, Max 10 units.
 - Varilight V COM 220W - Min 3, max 26 units.
 - Legrand Mosaic 078407 - Min 1, max 12 units.
 - Legrand Celiane 067083 - Min 1, max 12 units.
- If in doubt, contact the dimmer manufacturer for advice. Quote the input power of 5.2W, and inrush current of 0.45A 0.07ms.
- The above figures are for guidance only. All installations must comply with the appropriate standards.
- Input power 5.2W / Power factor 0.88
- Suitable for 30, 60, and 90 minute fire-rated ceilings.
- The light source of this luminaire is not replaceable. When the light source reaches it's end of life the whole luminaire shall be replaced.

T Connector

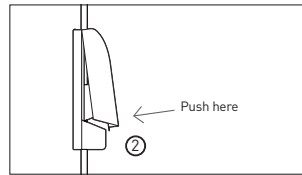
Cord grip adaptor / Wired connector



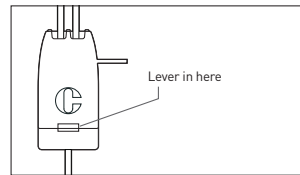
① Insert pivot legs into location holes



② Push firmly to snap shut



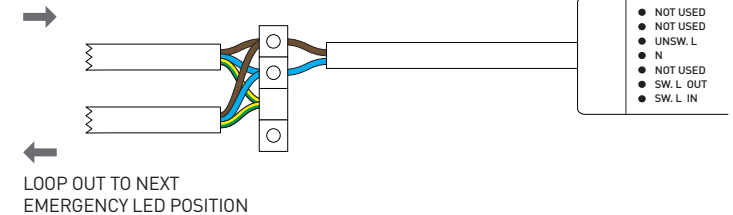
To open connector, lever apart



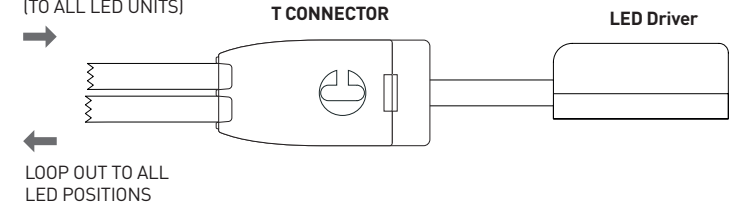
Mains circuit



UNSWITCHED LIVE CIRCUIT -
PERMANENT LIVE
(TO EMERGENCY LED UNITS
ONLY)



SWITCHED LIVE CIRCUIT
(TO ALL LED UNITS)



t +44 (0) 1604 495 151 f +44 (0) 1604 495 095
e sales@collingwoodgroup.com w collingwoodlighting.com



t +33 (0) 4 816 816 10 f +33 (0) 4 816 816 11
e ventes@collingwoodgroup.com w collingwoodlighting.com



t +49 (0) 89 411123 777 f +49 (0) 89 411123 778
e verkauf@collingwoodgroup.com w collingwoodlighting.com

Collingwood Lighting, Brooklands House, Sywell Aerodrome, Sywell, Northampton NN6 0BT, United Kingdom

HLI 1125 V2


COLLINGWOOD
LIGHTING