



Sw.-mode POW unit,24VDC,0,2A,1ph.stabil.



Powering Business Worldwide™

Part no. EASY200-POW

Article no. 229424

## Delivery programme

Product range			Control relays easyRelay Multi-function-display MFD-Titan
Product range			Switched-mode power supply units easyPOW
Basic function			Accessories for remote monitoring unit PSU
			primary chopper controlled
Phases			1-phase
Input voltage range		V	85 - 264 V AC
Nominal input voltage			100 - 240 V AC
Rated output voltage			24 V DC (± 3%) 12 V DC (± 4%)
Measuring output current		CSA	0.35 0.02
For use with			easy500 easy700 easy800 MFD-CP8 EC4P ES4P

## Approvals

Product Standards

UL File No.  
UL CCN  
CSA File No.  
CSA Class No.  
NA Certification  
Degree of Protection

IEC/EN see Technical Data; UL 508; CSA C22.2 No. 142-M1987; CSA C22.2 No. 213-M1987; CE marking  
E135462  
NRAQ  
012528  
2252-01 + 2258-02  
UL listed, CSA certified  
IEC: IP20, UL/CSA Type: -

## General

Standards			EN 55011, EN 55022, IEC/EN 61000-4, IEC 60068-2-6, IEC 60068-2-27
Dimensions (W x H x D)		mm	35.5 x 90 x 58 (2 space units)
Weight		kg	0.1
Mounting			Top-hat rail IEC/EN 60715, 35 mm or screw fixing using fixing brackets ZB4-101-GF1 (accessories)

## Terminal capacities

Solid		mm <sup>2</sup>	0.2/4 (AWG 22 - 12)
Flexible with ferrule		mm <sup>2</sup>	0.2/2.5 (AWG 22 - 12)
Standard screwdriver		mm	3.5 x 0.8
Max. tightening torque		Nm	0.6

## Climatic environmental conditions

Operating ambient temperature		°C	-25 ... 55, low temperatures to IEC 60068-2-1, high temperatures to IEC 60068-2-2
Condensation			Take appropriate measures to prevent condensation
Storage		°C	- 40 - 70
Relative humidity, non-condensing (IEC/EN 60068-2-30)		%	
Air humidity, non-condensing, min.		%	5
Air humidity, non-condensing, max.		%	95
Air pressure (operation)		hPa	795 - 1080
Max. installation altitude above sea level, observe derating with higher altitudes		m	2000

## Ambient conditions, mechanical

Protection type (IEC/EN 60529, EN50178, VBG 4)			IP20
Vibrations (IEC/EN 60068-2-6)		Hz	
Constant amplitude 0.15 mm		Hz	10 - 57
Constant acceleration 2 g		Hz	57 - 150
Mechanical shock resistance (IEC/EN 60068-2-27) semi-sinusoidal 15 g/11 ms		Impacts	18
Drop to IEC/EN 60068-2-31	Drop height	mm	50
Free fall, packaged (IEC/EN 60068-2-32)		m	1
Mounting position			Vertical or horizontal

### Electromagnetic compatibility (EMC)

Electrostatic discharge (IEC/EN 61000-4-2, Level 3, ESD)		kV	
Air discharge		kV	8
Contact discharge		kV	6
Electromagnetic fields (RFI), to IEC EN 61000-4-3		V/m	10
Radio interference suppression			EN 55011 Class B, EN 55022 Class B
Burst pulses (IEC/EN 61000-4-4, level 3)		kV	2
Power pulses (surge) (IEC/EN 61000-4-5)		kV	2 (supply cables, symmetrical)
High-energy pulses (surge) (IEC/EN 61000-4-5, level 2), 24 V		kV	
power pulses (surge) (IEC/EN 61000-4-5, level 2)		kV	0.5 (outgoer cables symmetrical, EASY...DC)
Immunity to line-conducted interference to (IEC/EN 61000-4-6)		V	10
Surge voltage (EN 50178), 24 V		kV	
Surge voltage		kV	6

### Insulation resistance

Clearance in air and creepage distances			EN 50178
Insulation resistance			EN 50178
Protection class $U_{out}$ to $U_{in}$			Class II to IEC 60536
Potential isolation primary/secondary			Yes, SELV (VDE 0100 Part 410; IEC 60364-4-41, HD 384.4.41 S2) EN 60950, EN 50178

### Input voltage

Rated input voltage DC		V DC	
Rated voltage		V	100/120/230/240 (-15/+10 %)
Protective switches AC			
PKZ			FAZ-C1/1 or FAZ-B6/1
Rated input voltage DC		V DC	85 264
DC protective switches			
Switch			FAZ-C2/1-DC
Voltage range		V AC	85 - 264
Frequency range		Hz	47 - 63
Mains failure bridging 115/230 V (IEC/EN 61000-4-11)		ms	> 10/> 20
Fuse 115/230 V		A	1.5 slow

### Rating data

Efficiency		%	> 80
Power consumption		W	Normally 7
Power loss		W	Normally 1

### Input current

Input current rated value 115/230 V AC		A	Approx. 0.17/0.05
Inrush current at 25 °C 230 V		A	< 5

### Output voltage

12 V DC (reference voltage)			
Rated value		V DC	12
Tolerance		%	± 4
Switching peaks		mV <sub>SS</sub>	< 7
Effect of input voltage		%	± 1
Effect with 25 - 100 % load change		%	± 1

<b>24 V DC</b>			
Rated value		V DC	24
Tolerance		%	± 3
Switching peaks 115/230		mV <sub>PP</sub>	< 50/30
Effect of input voltage		%	± 1
Effect with 25 - 100 % load change		%	± 1

### Output current

<b>12 V DC (reference voltage)</b>			
Output current		mA	0 - 20
Effectiveness of current limitation		mA	20
Reduction of output voltage after current limitation		V	< 12
Overload proof			Yes, by current limitation permanently short-circuit proof
Proof against sustained short circuit			Yes
<b>24 V DC</b>			
Output current		A	0 - 0.35
Effectiveness of current limitation		A	> 0.4
Overload proof			Yes, by current limitation
Proof against sustained short circuit			Yes, hiccup-mode

### Special load conditions

Lamp load, cold, 24 V DC		W	2
Base load present		W	1
Behaviour on emergency-stop in 24 V circuit, disconnection with contactor (contactor load, no damage)		W	6

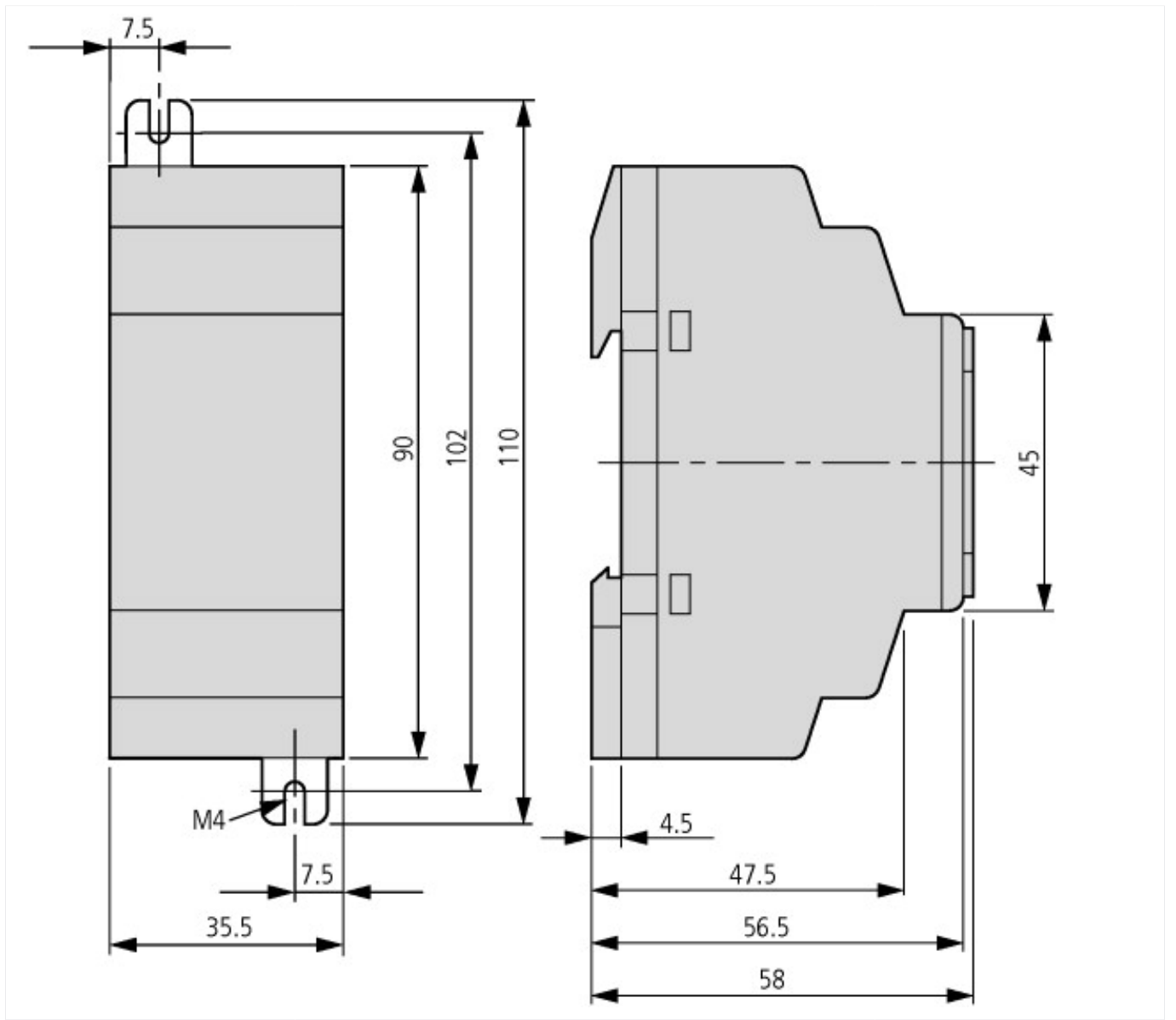
### Displays

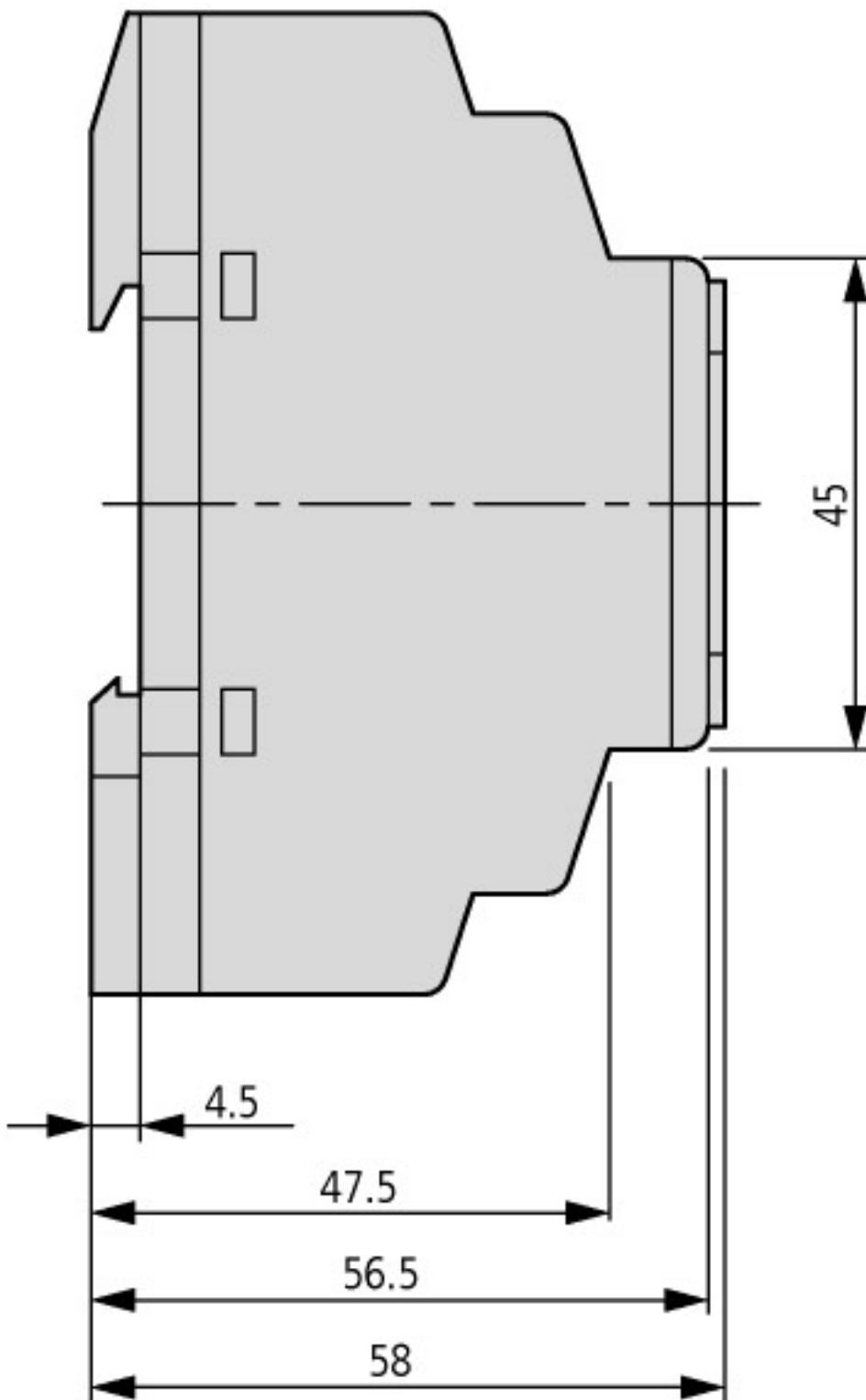
Indication of output voltage (LED, continuous green light = OK)		V DC	24
---	--	---------	----

### Technical data ETIM 4.0

Type of voltage (input voltage)			AC
Depth		mm	60
Height		mm	90
Width		mm	32

### Dimensions





### Additional product information (links)

#### IL05012003Z (AWA2727-1869) Power supply unit

IL05012003Z (AWA2727-1869) Power supply unit	<a href="ftp://ftp.moeller.net/DOCUMENTATION/AWA_INSTRUCTIONS/IL05012003Z2010_11.pdf">ftp://ftp.moeller.net/DOCUMENTATION/AWA_INSTRUCTIONS/IL05012003Z2010_11.pdf</a>
--	---

#### MN04902001Z-EN (AWB2528-1423) easy800 Control Relay

MN04902001Z-DE (AWB2528-1423) Steuerrelais easy800 - Deutsch	<a href="ftp://ftp.moeller.net/DOCUMENTATION/AWB_MANUALS/MN04902001Z_DE.pdf">ftp://ftp.moeller.net/DOCUMENTATION/AWB_MANUALS/MN04902001Z_DE.pdf</a>
--	---

MN04902001Z-EN (AWB2528-1423) easy800 Control Relay - English	<a href="ftp://ftp.moeller.net/DOCUMENTATION/AWB_MANUALS/MN04902001Z_EN.pdf">ftp://ftp.moeller.net/DOCUMENTATION/AWB_MANUALS/MN04902001Z_EN.pdf</a>
---	---

AWB2528-1423 Modules logiques easy800 - français	<a href="ftp://ftp.moeller.net/DOCUMENTATION/AWB_MANUALS/h1423f.pdf">ftp://ftp.moeller.net/DOCUMENTATION/AWB_MANUALS/h1423f.pdf</a>
--	---

AWB2528-1423 Módulo de control easy800 - español	<a href="ftp://ftp.moeller.net/DOCUMENTATION/AWB_MANUALS/h1423e.pdf">ftp://ftp.moeller.net/DOCUMENTATION/AWB_MANUALS/h1423e.pdf</a>
--	---

AWB2528-1423 Relè di comando e controllo - italiano	<a href="ftp://ftp.moeller.net/DOCUMENTATION/AWB_MANUALS/h1423i.pdf">ftp://ftp.moeller.net/DOCUMENTATION/AWB_MANUALS/h1423i.pdf</a>
---	---

#### MN05013003Z-EN (AWB2528-1508) control relay easy500, easy700

MN05013003Z-DE (AWB2528-1508) Steuerrelais easy500, easy700 - Deutsch	<a href="ftp://ftp.moeller.net/DOCUMENTATION/AWB_MANUALS/MN05013003Z_DE.pdf">ftp://ftp.moeller.net/DOCUMENTATION/AWB_MANUALS/MN05013003Z_DE.pdf</a>
MN05013003Z-EN (AWB2528-1508) control relay easy500, easy700 - English	<a href="ftp://ftp.moeller.net/DOCUMENTATION/AWB_MANUALS/MN05013003Z_EN.pdf">ftp://ftp.moeller.net/DOCUMENTATION/AWB_MANUALS/MN05013003Z_EN.pdf</a>
<b>MN05003003Z-EN (AWB2724-1584) Programmable logic controller easy Control EC4-200</b>	
MN05003003Z-DE (AWB2724-1584) easyControl Programmierbare Steuerung EC4-200 - Deutsch	<a href="ftp://ftp.moeller.net/DOCUMENTATION/AWB_MANUALS/MN05003003Z_DE.pdf">ftp://ftp.moeller.net/DOCUMENTATION/AWB_MANUALS/MN05003003Z_DE.pdf</a>
MN05003003Z-EN (AWB2724-1584) Programmable logic controller easy Control EC4-200 - English	<a href="ftp://ftp.moeller.net/DOCUMENTATION/AWB_MANUALS/MN05003003Z_EN.pdf">ftp://ftp.moeller.net/DOCUMENTATION/AWB_MANUALS/MN05003003Z_EN.pdf</a>
AWB2724-1584 Automate programmable easy Control EC4-200 - français	<a href="ftp://ftp.moeller.net/DOCUMENTATION/AWB_MANUALS/h1584f.pdf">ftp://ftp.moeller.net/DOCUMENTATION/AWB_MANUALS/h1584f.pdf</a>