

Standard Distribution Trunking (including coupler, lid & turnbuckles) Pre Galvanised

RU22
RU33
RU44
RY66



Product Description

Cable trunking range consists of standard distribution trunking and lighting trunking. Standard distribution trunking starts at 50mm in depth and width and increases up to 150mm. Lids are attached by turnbuckle fixings.

Trunking systems have been developed to meet the requirements of BS EN 50085-1: 2005 and A1 2013 Cable trunking systems and cable ducting systems for electrical installations.

Trunking is manufactured from mild steel pre galvanised steel complying with BS EN 10346:2009 (Continuously hot-dip coated steel flat products)

Cable trunking systems are designed as a complete system with a range of accessories.

Integral connectors are included for all fittings as well as fixing bolts. These connectors include pre tapped holes avoiding the need for nuts and washers. Some example fittings are below with many others in the range



NLRU22GBT90



NLRU22GBI45



NLRU22GTT



Turnbuckles

Standard trunking systems incorporate lids connected by turnbuckle fasteners pre-assembled. Flush fixing with its cross head allows use with a conventional cross/flat blade screwdrivers.

Integral couplers with pre tapped holes

Cable Trunking Systems generally conform to BS EN 50085-1:2005 Cable trunking systems and cable ducting systems for electrical installations-Part 1: General requirements, and BS EN 50085-2-1:2006 Cable trunking systems and cable ducting systems for electrical installations-Part 2-1: Cable trunking systems and cable ducting systems intended for mounting on walls and ceilings.

3M Trunking - c/w Lid



	Dimensions (mm)
NLRU22	50 x 50
NLRU33	75 x 75
NLRU44	100 x 100
NLRU66	150 x 150

3M Trunking Lid



	Dimensions (mm)
NLRU2LID	50
NLRU3LID	75
NLRU4LID	100
NLRU6LID	150

Tee Top Cover



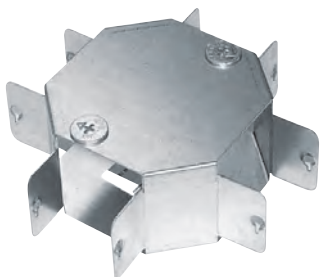
	Dimensions (mm)
NLRU22GTT	50
NLRU33GTT	75
NLRU44GTT	100
NLRU66GTT	150

Flange Coupling



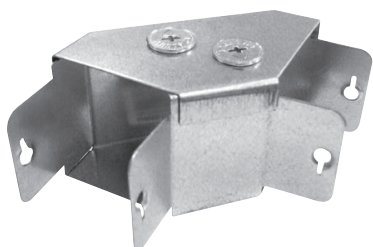
	Dimensions (mm)
NLRU22F	50 x 50
NLRU33F	75 x 75
NLRU44F	100 x 100
NLRU66F	150 x 150

Four Way Box Top Cover



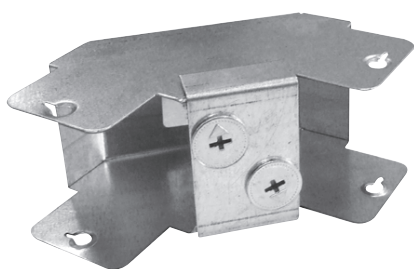
	Dimensions (mm)
NLRU22GFT	50
NLRU33GFT	75
NLRU44GFT	100
NLRU66GFT	150

90° Bend Top Cover



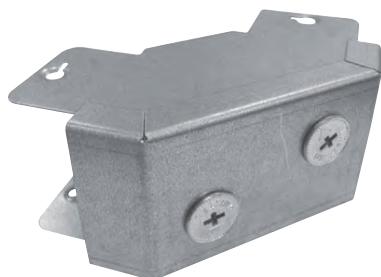
	Dimensions (mm)
NLRU22GBT90	50
NLRU33GBT90	75
NLRU44GBT90	100
NLRU66GBT90	150

90° Bend Inside Cover



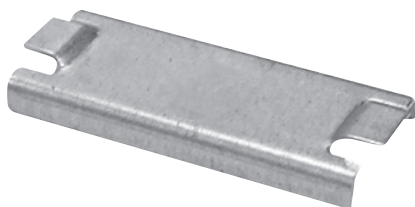
	Dimensions (mm)
NLRU22GBI90	50 x 50
NLRU33GBI90	75 x 75
NLRU44GBI90	100 x 100
NLRU66GBI90	150 x 150

90° Bend Outside Cover



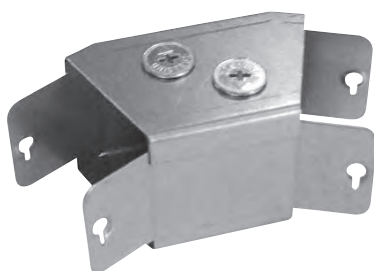
	Dimensions (mm)
NLRU22GBO90	50
NLRU33GBO90	75
NLRU44GBO90	100
NLRU66GBO90	150

Cable Retainers



	Dimensions (mm)
NLRU2CR	50 x 50
NLRU3CR	75 x 75
NLRU4CR	100 x 100
NLRU6CR	150 x 150

45° Bend Top Cover



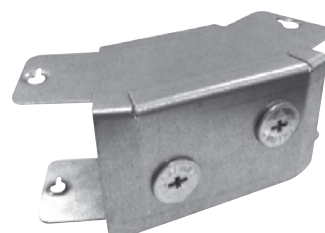
	Dimensions (mm)
NLRU22GBT45	50
NLRU33GBT45	75
NLRU44GBT45	100
NLRU66GBT45	150

45° Bend Inside Cover



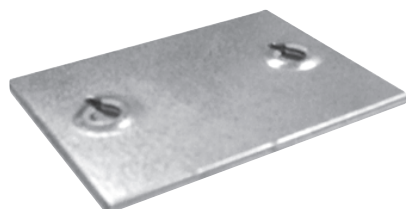
NLRU22GBI45

45° Bend Outside Cover



NLRU22GBO45

Couplers



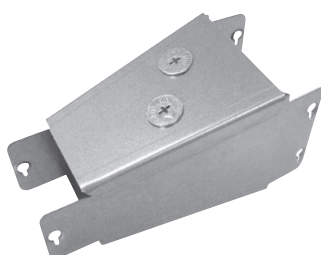
	Dimensions (mm)
NLRU22C	50
NLRU33C	75
NLRU44C	100
NLRU66C	150

End Caps



	Dimensions (mm)
NLRU22E	50
NLRU33E	75
NLRU44E	100
NLRU66E	150

Reducers



	Dimensions (mm)
NLRU3322R	75 x 75 to 50 x 50
NLRU4422R	100 x 100 to 50 x 50
NLRU4433R	100 x 100 to 75 x 75
NLRU6622R	150 x 150 to 50 x 50
NLRU6633R	150 x 150 to 100 x 100
NLRU6644R	150 x 150 to 100 x 100

Earth Link



NLUEL

Turnbuckles



NLUDB2

Hanging Bracket



	Dimensions (mm)
NLRU22H	50 x 50
NLRU33H	75 x 75
NLRU44H	100 x 100
NLRU66H	150 x 150

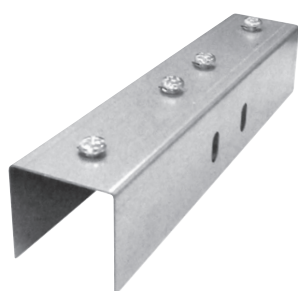
Fitting Adaptor



	Dimensions (mm)
NLRU22FCON	50 x 50
NLRU33FCON	75 x 75
NLRU44FCON	100 x 100
NLRU66FCON	150 x 150

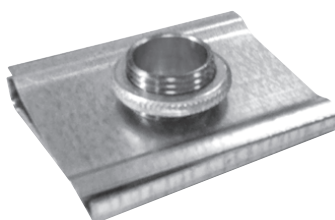
Lighting Trunking

Lighting Couplers



NLLTCOUP

Lighting Suspension Units



NLLTSUSFIT

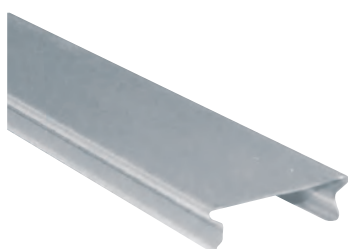
3M Lighting Trunking Lengths



50x50mm

NLLT2230

2M Lighting lids



	Material
NLLTLID20PG	Galvanised
NLLTLID20PL	White Plastic

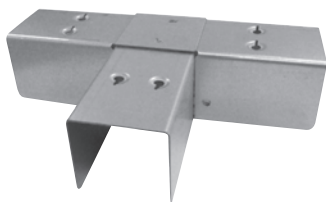
Lighting Stirrup hangers



	Size
NLLTSUS11	11mm
NLLTSUS20	20mm

Lighting Trunking - Fittings

50x50mm Top lid - Tee



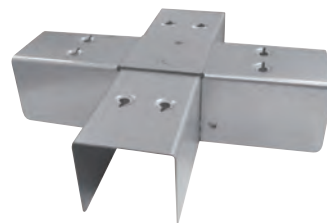
NLLT22BTT

50x50mm Top lid - 90° Bend



NLLT22BT90

50x50mm Crossovers



NLLT22GFT

90° Bend Int & Ext Cover



	Type
NLLT22BO90	External
NLLT22BI90	Internal

IP Rating

The protection of enclosures against ingress of dirt or against the ingress of water is defined in IEC529 (BS EN 60529:1991)

The degrees of protection are most commonly expressed as "IP" followed by two numbers, where the numbers define the degree of protection.

The first digit (Foreign Bodies Protection) shows the extent to which the equipment is protected against particles, or to which persons are protected from enclosed hazards.

First Index - Foreign Bodies Protection, Solids

Index	Protection against Human/Tool Contact	Protection against solid objects (foreign bodies)
0	No special protection	
1	Back of hand, Fist	Large foreign bodies, diam. >50mm
2	Finger	Medium-sized foreign bodies, diam. >12
3	Tools and wires etc with a thickness >2.5mm	Small foreign bodies, diam. >2.5mm
4	Tools and wires etc with a thickness >1mm	Granular foreign bodies, diam. >1mm

The second digit (Water Protection) indicates the extent of protection against water.

Second Index - Water Protection, Liquids

Index	Protection against water	Protection from condition
0	No special protection	
1	Water dripping/falling vertically	Condensation/Light rain
2	Water sprayed at an angle (up to 15° degrees from the vertical)	Light rain with wind
3	Spray water (any direction up to 60° degrees from the vertical)	Heavy rainstorm
4	Spray water from all directions, (limited ingress permitted)	Splashing
5	Low pressure water jets from all directions, (limited ingress permitted)	Hose down, residential
6	High pressure jets from all directions, (limited ingress permitted)	Hose down, commercial. eg. Ship decks
7	Temporary immersion, 15 cm to 1m	Immersion in tank
8	Permanent Immersion, under pressure	For use on Titanic recovery vehicle

According to degrees of protection provided by enclosure according to EN60529:1991

Cable trunking is IP30.

There is an option in the range for the enclosure to improve its protection level to **IPXXD** by adding an additional **IPXXD** wrap over clip onto all the Cable Trunking Straight Lengths. A works instruction can be provided on request.

Key features

- Part of a total system with a selection of associated support fittings and accessories to provide site installation solutions
- All accessories e.g. bends, tees etc. should be directly supported by a suitable support device or devices at appropriate positions
- Assembled using M6 fixings
- Integral connectors are included for bends tees etc.
- Cable trunking systems should not be used for equipotential bonding.
- Cable trunking systems are designed that when they are installed correctly as in normal use, live parts are not accessible
- Cable trunking systems are in normal use, passive in respect of electromagnetic influences (emission and immunity)

Technical details

- Manufactured from steel complying with BS EN 10346
- Tested in accordance with BS EN 50085-1: 2005 and A1 2013
- IP30 Rated, (IPXXD is also available)
- Impact resistance up to 2J
- Temperature range for transport, storage and application -25°C to 60°C

Dimensions

X-Sectional dimensions for 3m straights

Part No.	External depth mm	Internal depth mm	External width mm	Internal width mm	X-Sectional area mm ²	Gauge mm
NLRU22	51.8	50	51.8	50	2500	0.9
NLRU33	76.8	75	76.8	75	5625	1.0
NLRU44	102	100	102	100	10000	1.0
NLRU66	152.4	150	152.4	150	22500	1.2