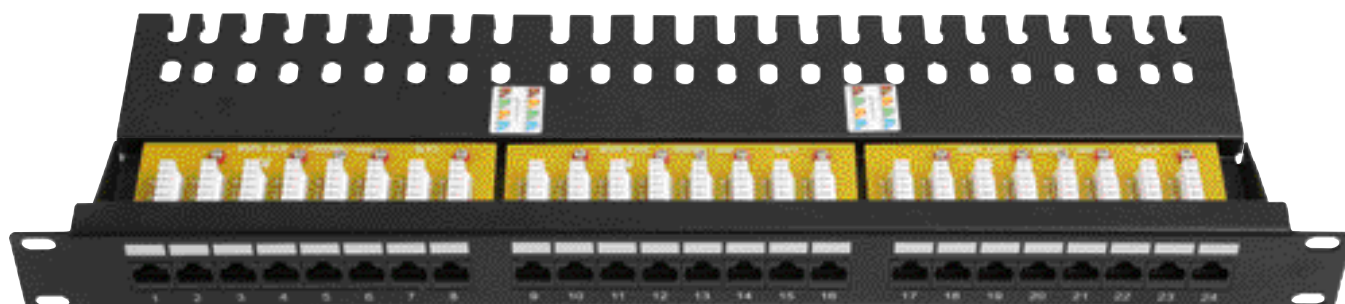


PATCH PANEL RJ45 CAT5E UTP UNSHIELDED



The Category 5E UTP Patch Panel are an economical alternative offered for network, efficient for high speed data transmission, permanent link and channel performance specifications.

Category 5E panels support both T568A and T568B wiring schemes using an easy to read color coded wiring label.

Rear termination is made quick and easy using a 110/LSA+ termination tool.

FEATURES:

- Patch panel C5E UTP Unshielded 100 Ω RJ45
- 24 ports IDC 90°
- 19 inch, 1U
- Black color
- 110/LSA+ type connector
- Solid conductors diameter from AWG 24 to AWG 22
- Identification by numbered icons from 1 to 24

PERFORMANCES:

- ANSI / TIA / EIA-568-C-2: category 5E
- ISO / IEC 11801 2nd Ed: Class D
- EN 50173: Class D