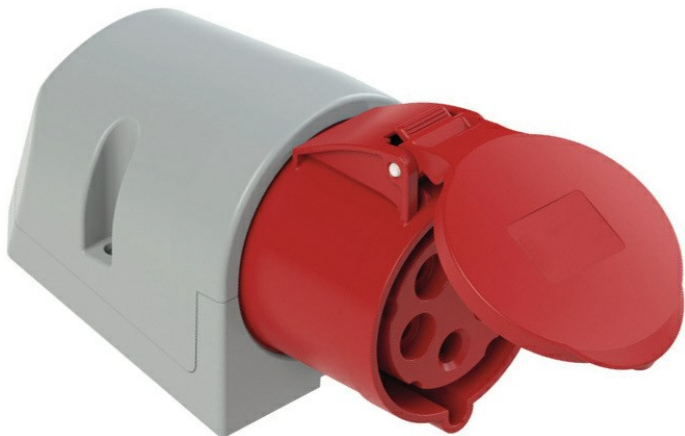




Industrial surface mounting socket screwless 32 A 3P+N+E 380/415 V IP44



Characteristics

Current (A) : **32**
 Type : **3P+N+T**
 Voltage (V) : **415**

Benefits

- Connection without screws.

GENERAL INFORMATION

Technical details

Angle: 90° gang plug.
 Body material: PA6 plastic
 Contact material: brass.
 Contact surface treatment: not treated.
 Screw-free installation.
 Internal mounting.
 Cable entry from top and rear.
 Threaded cable gland included.
 Position: 6h.
 Frequency: 50 - 60 Hz.
 Body unlocks via screw.

Application(s)

Can be used indoors or outdoors.

LOGISTIC INFORMATION

Packaging



No packaging

Height (cm) : 11,1
 Length (cm) : 15,7
 Depth (cm) : 8,5
 Net weight (kg) : 0,319
 Gross weight (kg) : 0,319



Outer package 1



Carton box

Height (cm) : 17
 Length (cm) : 19
 Depth (cm) : 29
 Net weight (kg) : 3,19
 Gross weight (kg) : 3,21



x 10.00

Outer package 2



Pallet

Height (cm) : 100
 Length (cm) : 120
 Depth (cm) : 80
 Net weight (kg) : 159,5
 Gross weight (kg) : 179,5



x 500.00