

**PRODUCT CODE: CTM50FB**  
CABLE TRAY



### DESCRIPTION

CTM50FB - 50mm GALV MEDIUM DUTY RETURN FLANGE 90 DEGREE  
FLAT BEND

### FINISH

PRE GALVANISED

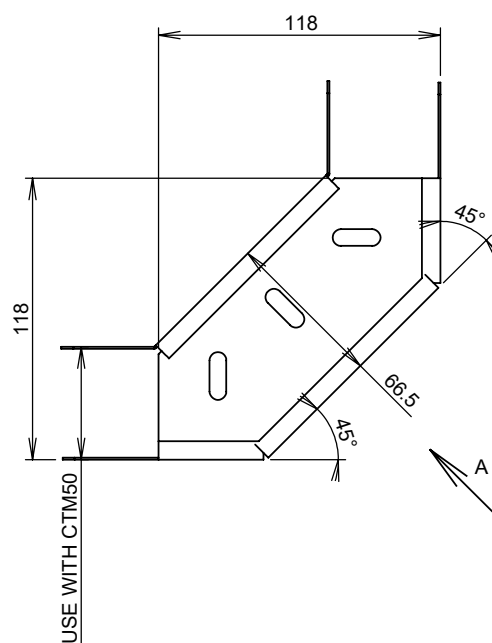
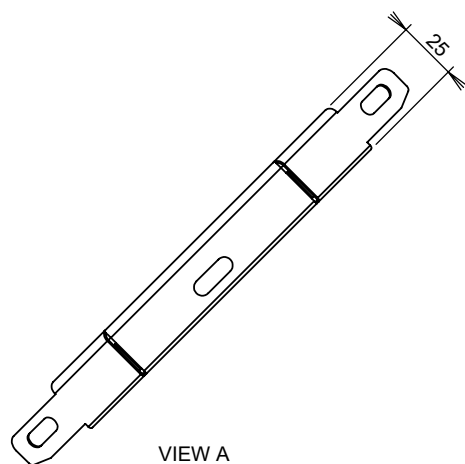
### MATERIAL

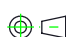
STEEL - GRADE Z275

### PACKAGING

EACH

### ADDITIONAL NOTES



 Values are nominal and with a general tolerance  $\pm 5\%$  unless  
otherwise specified