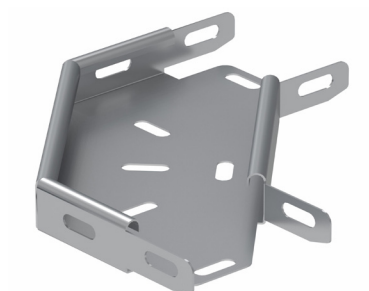


**PRODUCT CODE: CTM75FB**  
CABLE TRAY



### DESCRIPTION

CTM75FB - 75mm GALV MEDIUM DUTY RETURN FLANGE 90 DEGREE  
FLAT BEND

### FINISH

PRE GALVANISED

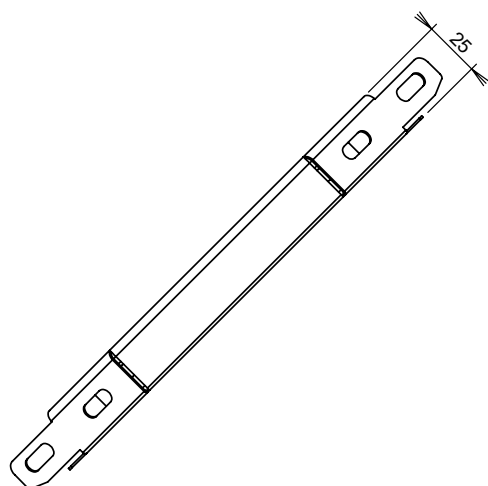
### MATERIAL

STEEL - GRADE Z275

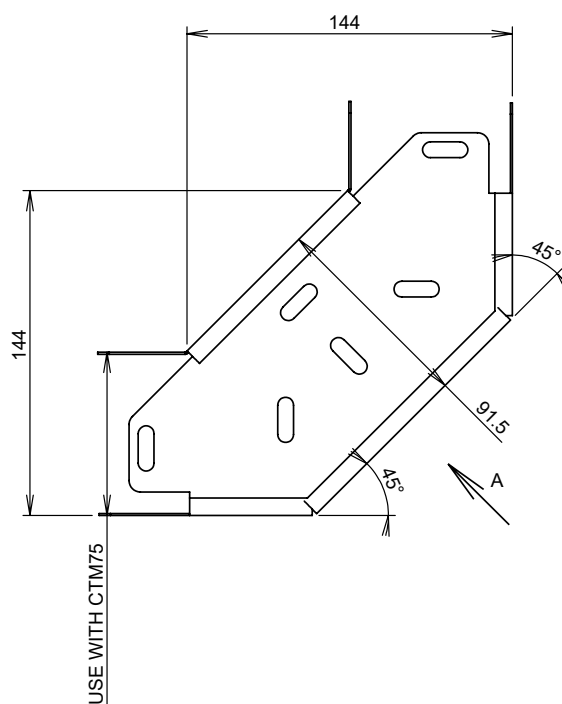
### PACKAGING

EACH

### ADDITIONAL NOTES



VIEW A



Values are nominal and with a general tolerance  $\pm 5\%$  unless  
otherwise specified