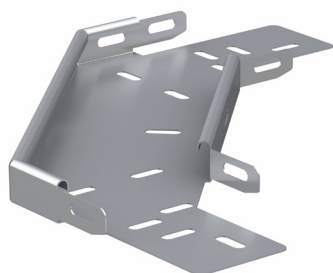


PRODUCT CODE: CTM100FB
CABLE TRAY



DESCRIPTION

CTM100FB - 100mm GALV MEDIUM DUTY RETURN FLANGE 90 DEGREE
FLAT BEND

FINISH

PRE GALVANISED

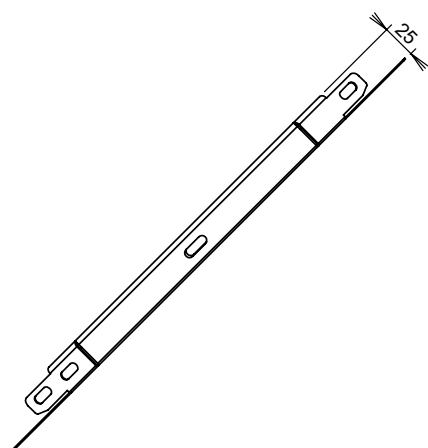
MATERIAL

STEEL - GRADE Z275

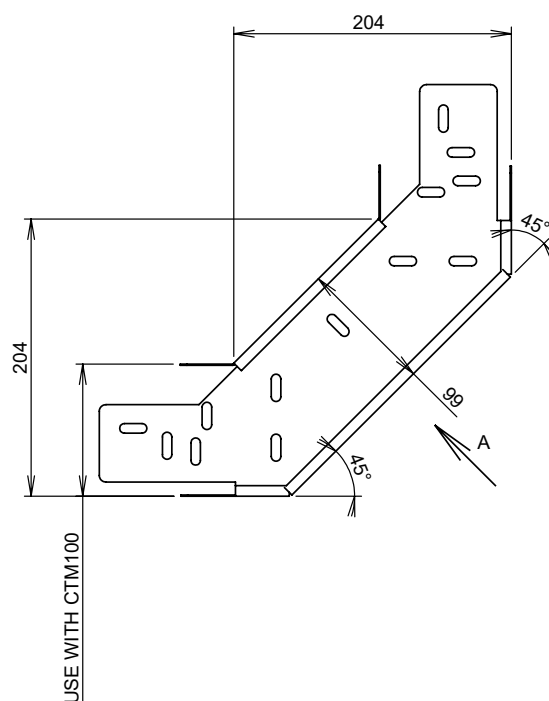
PACKAGING


EACH

ADDITIONAL NOTES



VIEW A



 Values are nominal and with a general tolerance $\pm 5\%$ unless
otherwise specified