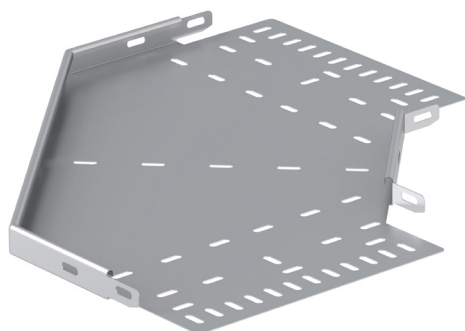


PRODUCT CODE: CTM300FB
CABLE TRAY



DESCRIPTION

CTM300FB - 300mm GALV MEDIUM DUTY RETURN FLANGE 90 DEGREE
FLAT BEND

FINISH

PRE GALVANISED

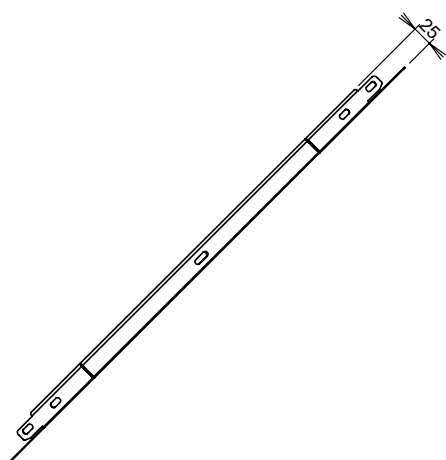
MATERIAL

STEEL - GRADE Z275

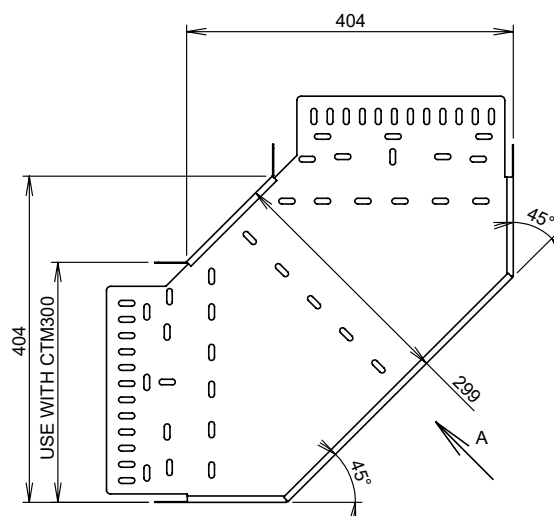
PACKAGING

EACH

ADDITIONAL NOTES



VIEW A



Values are nominal and with a general tolerance $\pm 5\%$ unless
otherwise specified