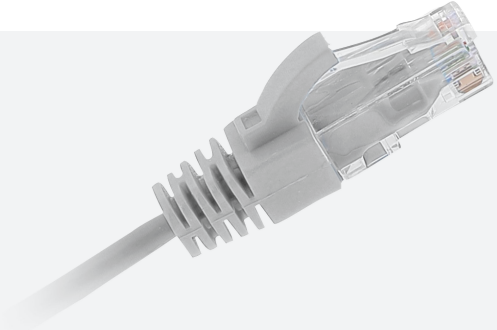




## PATCH CORD INITIO CAT6 U/UTP LSHF

GGM INIC6U05MGY

Patch cord RJ45 INITIO Category 6  
U/UTP 26AWG LSHF Grey  
50 cm



INITIO Category 6 U/UTP patchcords is an economical alternative offered for Network, efficient for high speed data transmission, phone application and work area. High performances that are complying with the effective cabling standards (ISO-IEC / EIA-TIA) They are suitable for transmission frequencies up to 100 MHz.

All patchcords are supplied with molded boots.

#### FEATURES

<b>Shield type :</b>	U/UTP
<b>Category :</b>	6
<b>Length :</b>	0.5 m
<b>Connector A :</b>	RJ45 8(8)
<b>Connector B :</b>	RJ45 8(8)
<b>Jacket colour :</b>	Grey
<b>Boot :</b>	Moulded-on
<b>Snagless :</b>	Yes
<b>Boot colour :</b>	Grey
<b>Fire retardant :</b>	Yes
<b>Zero halogen :</b>	Yes
<b>Oil resistant :</b>	No
<b>Number of pairs :</b>	1x4
<b>AWG :</b>	26
<b>Wire scheme :</b>	Straight
<b>NVP :</b>	70 %

PART NUMBER	DESCRIPTION
<b>GGM INIC6U05MGY</b>	Patch cord RJ45 INITIO Category 6 U/UTP 26AWG LSHF Grey 50 cm