

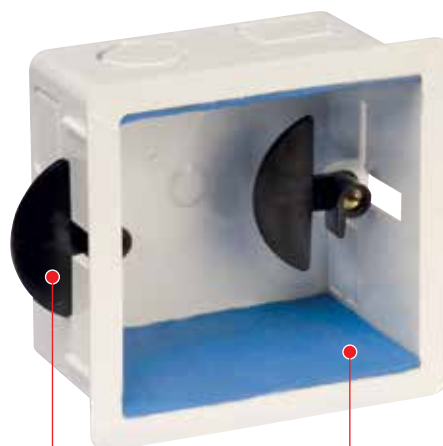
FIRE BARRIER PADS

Marshall-Tufflex dry lining boxes are available with Envirograf® intumescent (fire barrier) pads.

With fire barrier pads fitted, boxes comply with the current version of BS 7671 Wiring Regulations and Document B of the UK Building Regulations.

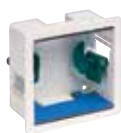
Snap out clamps with size identification by colour:

Wall thickness adjustment	Clamp colour
1 - 9mm	Grey
6 - 14mm	White
18 - 25mm	Green
9 - 26mm	Black



Snap out clamps

Intumescent (fire barrier) pads



1 gang 34mm internal depth

code	adj.	pack
MDLB3FWH	1-9mm	20
MDLB1FWH	6-14mm	20
MDLB7FWH	18-25mm	20

Note: adj. = adjustment



2 gang 34mm internal depth

code	adj.	pack
MDLB4FWH	1-9mm	10
MDLB2FWH	6-14mm	10
MDLB8FWH	18-25mm	10



1 gang 46mm internal depth

code	adj.	pack
MDLB29FWH	9-26mm	10



2 gang 46mm internal depth

code	adj.	pack
MDLB30FWH	9-26mm	5

Problem



Without pads

Solution



With pads

In the event of a fire, the cover plate of a socket, switch or light fitting may sag and disintegrate, leaving a perfect escape route for a fire to travel up the cavity, into an adjoining room or ceiling. When Envirograf® pads are fitted, they will expand in the presence of heat and create an effective fire barrier. This solution has been specifically designed to help electrical contractors and building design professionals meet and comply with the current regulations.



Double back entry (loop-in) 34mm internal depth

code	fix. centre	pack
MDCRB2FWH	50.8/60.3mm	10

Ø cut out = 70mm

p263

Technical
Information