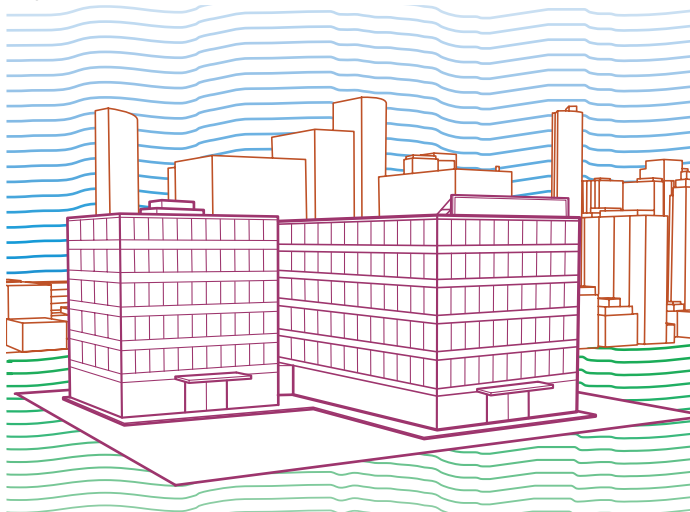


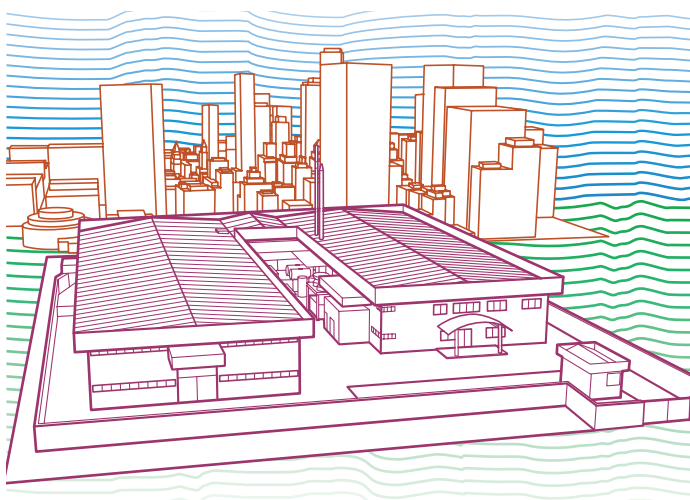
# Power breakers

## Moulded case circuit breakers overview

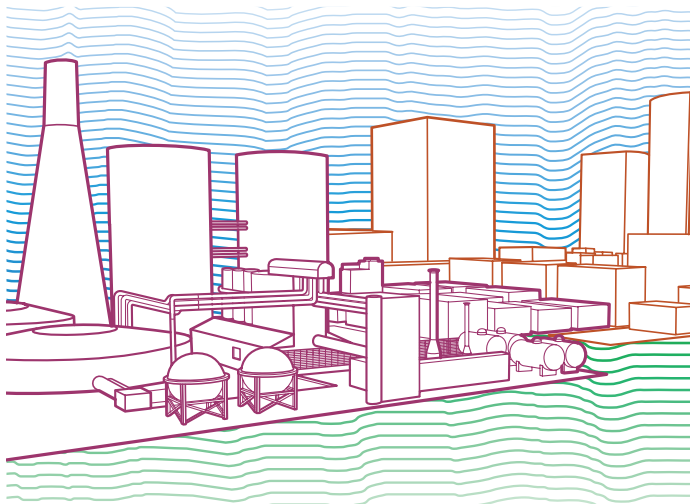
Up to 250 A



Up to 1000 A



Up to 3200 A



### SACE Tmax

Size	[A]
Rated service voltage, Ue	(AC) 50-60Hz [V] (DC) [V]
Versions	
Breaking capacity according to IEC 60947-2	
Rated ultimate short-circuit breaking capacity, Icu	
Icu @ 220-230-240V 50-60Hz (AC)	[kA]
Icu @ 415V 50-60Hz (AC)	[kA]
Icu @ 690V 50-60Hz (AC)	[kA]
(DC) 500V - 2 poles in series	[kA]
(DC) 500V - 3 poles in series	[kA]
(DC) 750V - 3 poles in series	[kA]
Rated service short-circuit breaking capacity, Ics	
Ics @ 220-230-240V 50-60Hz (AC)	[kA]
Ics @ 415V 50-60Hz (AC)	[kA]
Ics @ 690V 50-60Hz (AC)	[kA]
Mechanical life	[N° Operations] [N° Hourly operations]
Electrical life @ 415V (AC)	[N° Operations] [N° Hourly operations]
Dimensions	3 poles [mm] 4 poles [mm]
(Width/Depth/Height)	

### SACE Tmax

Size	[A]
Rated service voltage, Ue	(AC) 50-60Hz [V] (DC) [V]
Versions	
Breaking capacity according to IEC 60947-2	
Rated ultimate short-circuit breaking capacity, Icu	
Icu @ 220-230-240V 50-60Hz (AC)	[kA]
Icu @ 415V 50-60Hz (AC)	[kA]
Icu @ 690V 50-60Hz (AC)	[kA]
(DC) 500V - 2 poles in series	[kA]
(DC) 500V - 3 poles in series	[kA]
(DC) 750V - 3 poles in series	[kA]
Rated service short-circuit breaking capacity, Ics	
Ics @ 220-230-240V 50-60Hz (AC)	[kA]
Ics @ 415V 50-60Hz (AC)	[kA]
Ics @ 690V 50-60Hz (AC)	[kA]
Mechanical life	[N° Operations] [N° Hourly operations]
Electrical life @ 415V (AC)	[N° Operations] [N° Hourly operations]
Dimensions	3 poles [mm] 4 poles [mm]
(Width/Depth/Height)	

### SACE Tmax

Size	[A]
Rated service voltage, Ue	(AC) 50-60Hz [V] (DC) [V]
Versions	
Breaking capacity according to IEC 60947-2	
Rated ultimate short-circuit breaking capacity, Icu	
Icu @ 220-230-240V 50-60Hz (AC)	[kA]
Icu @ 415V 50-60Hz (AC)	[kA]
Icu @ 690V 50-60Hz (AC)	[kA]
(DC) 500V - 2 poles in series	[kA]
(DC) 500V - 3 poles in series	[kA]
(DC) 750V - 3 poles in series	[kA]
Rated service short-circuit breaking capacity, Ics	
Ics @ 220-230-240V 50-60Hz (AC)	[kA]
Ics @ 415V 50-60Hz (AC)	[kA]
Ics @ 690V 50-60Hz (AC)	[kA]
Mechanical life	[N° Operations] [N° Hourly operations]
Electrical life @ 415V (AC)	[N° Operations] [N° Hourly operations]
Dimensions	3 poles [mm] 4 poles [mm]
(Width/Depth/Height)	

XT1					XT2					XT3		XT4				
160					160					250		160/250				
690					690					690		690				
500					500					500		500 <sup>(4)</sup>				
Fixed, Plug-in <sup>(1)</sup>					Fixed, Plug-in, Withdrawable					Fixed, Plug-in		Fixed, Plug-in, Withdrawable				
B	C	N	S	H	N	S	H	L	V	N	S	N	S	L	H	V
25	40	65	85	100	65	85	100	150	200	50	85	65	85	100	150	200
18	25	36	50	70	36	50	70	120	150	36	50	36	50	70	120	150
3	4	6	8	10	10	12	15	18	20	5	6	10	12	15	20	25/100 <sup>(2)</sup>
-	-	-	-	-	-	-	-	-	-	-	-	36	50	70	85	100
18 <sup>(3)</sup>	25 <sup>(3)</sup>	36 <sup>(3)</sup>	50 <sup>(3)</sup>	70 <sup>(3)</sup>	36	50	70	85	100	36	50	36 <sup>(4)</sup>	50 <sup>(4)</sup>	70 <sup>(4)</sup>	85 <sup>(4)</sup>	100 <sup>(4)</sup>
-	-	-	-	-	-	-	-	-	-	-	-	-	-	-	-	-
100%	100%	75%(50)	75%	75%	100%	100%	100%	100%	100%	75%	50%	100%	100%	100%	100%	100%
100%	100%	100%	75%	50% (37,5)	100%	100%	100%	100%	100%	75%	50% (27)	100%	100%	100%	100%	100%
100%	100%	100%	75%	50%	100%	100%	100%	75% (15)	75% (15)	75%	50%	100%	100%	100%	100%	75% (20)
25000					25000					25000		25000				
240					240					240		240				
8000					8000					8000		8000				
120					120					120		120				
76,2x70x130					90x82,5x130					105x70x150		105x82,5x160				
101,6x70x130					120x82,5x130					140x70x150		140x82,5x160				

T4					T5					T6				
320					400/630					630/800/1000				
690					690					690				
750					750					750				
Fixed, Plug-in, Withdrawable					Fixed, Plug-in, Withdrawable					Fixed, Withdrawable <sup>(5)</sup>				
N	S	H	L	V	N	S	H	L	V	N	S	H	L	V <sup>(6)</sup>
70	85	100	200	200	70	85	100	200	200	70	85	100	200	200
36	50	70	120	200	36	50	70	120	200	36	50	70	100	150
20	25	40	70	80	20	25	40	70	80	20	22	25	30	40
25	36	50	70	100	25	36	50	70	100	20	35	50	65	70
-	-	-	-	-	-	-	-	-	-	-	-	-	-	-
16	25	36	50	70	16	25	36	50	70	16	20	36	50	50
100%	100%	100%	100%	100%	100%	100%	100%	100%	100%	100%	100%	100%	75%	100%
100%	100%	100%	100%	100%	100%	100%	100%	100%	100%	100%	100%	100%	75%	75%
100%	100%	100%	100%	100%	100%	100%	100% <sup>(7)</sup>	100% <sup>(8)</sup>	100% <sup>(8)</sup>	75%	75%	75%	75%	75%
20000					20000					20000				
240					120					120				
6000					7000 (400 A) - 5000 (630 A)					7000 (630A) - 5000 (800A) - 4000 (1000A)				
120					60					60				
105 x 103.5 x 205					140 x 103.5 x 205					210 x 103.5 x 268				
140 x 103.5 x 205					186 x 103.5 x 205					280 x 103.5 x 268				

T7					T8	
800/1000/1250/1600					2000/2500/3200	
690					690	
-					-	
Fixed, Withdrawable					Fixed	
S	H	L	V <sup>(9)</sup>	X <sup>(10)</sup>	L	V
85	100	200	200	170	85	130
50	70	120	150	170	85	130
30	42	50	60	75	50	80
-	-	-	-	-	-	-
-	-	-	-	-	-	-
-	-	-	-	-	-	-
100%	100%	100%	100%	100%	100%	75%
100%	100%	100%	100%	100%	100%	75%
100%	75%	75%	75%	100%	100%	75%
10000					15000	
60					60	
2000 (versioni S, H, L) / 3000 (versione V)					4500(2000A);4000 (2500A);3000 (3200A)	
60					20	
210 x 154 (leva) /178 (motorizzabile) x 268					427 x 282 x 382	
280 x 154 (leva) /178 (motorizzabile) x 268					553 x 282 x 382	

- <sup>(1)</sup> XT1 plug-in In max=125A  
<sup>(2)</sup> 25kA@690V available for XT4 250; 100kA@690V available for XT4 160  
<sup>(3)</sup> XT1 500V DC 4 poles in series  
<sup>(4)</sup> XT4 750V DC ask ABB SACE whether available  
<sup>(5)</sup> Withdrawable not available for T6 1000A  
<sup>(6)</sup> V version only available for frame 630A/800A  
<sup>(7)</sup> 75% for T5 630  
<sup>(8)</sup> 50% for T5 630  
<sup>(9)</sup> Only for T7 800/1000/1250  
<sup>(10)</sup> Only for T7 800