

Cable Protection Systems

Wiring Ducts

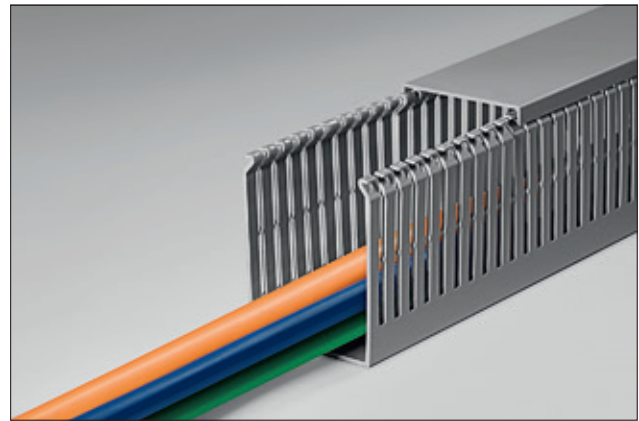
Rigid PVC Wiring Ducts

HelaDuct HTWD-PN for small-diameter wires

T1E wiring ducts are used in control panels, switching systems, and especially electronic control systems.

Features and Benefits

- Narrow slots suitable for small-diameter wires
- Smooth, burr-free edges protect installers from injury and wires from damage
- Fingers can be removed with no sharp edges at pre-notched snap-off points
- Further pre-notched snap-off point at base of sidewall allow cutting out and removing sections of sidewall with no sharp edges
- Raised mounting points for easily and securely fastening wire retainers and other accessories prior to cabling
- Wire retainers and accessories leave no protruding parts below surface of duct
- Duct covers are easy to mount and remove, yet hold securely even in a vertical position and under vibration
- Cover is flush with side of duct, allowing for tight, contiguous placement of ducts
- Additional retainer nub on fingers on ducts height 80 and above to prevent cables from slipping
- Base perforation according to DIN EN 50085

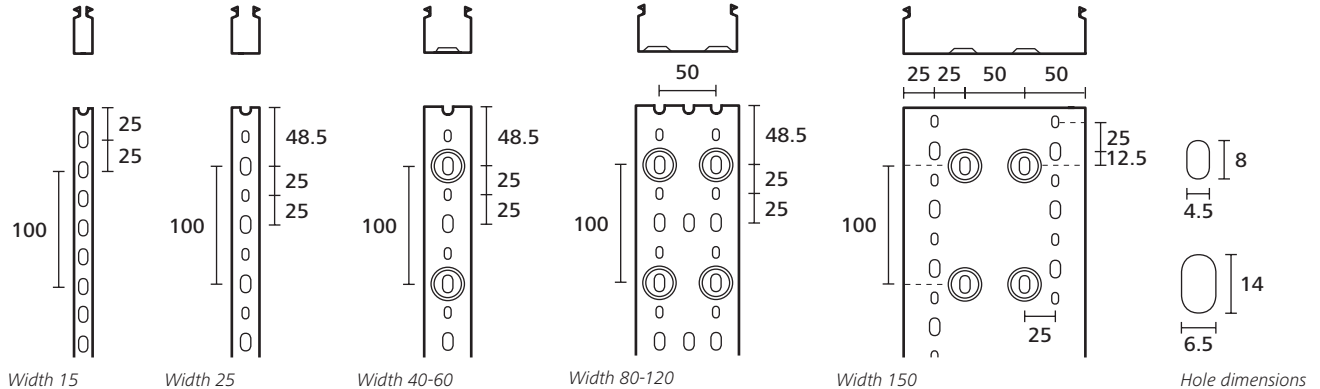


HTWD-PN wiring ducts with narrow fingers and slots for small-diameter wires.

| | |
|------------------------------|-------------------------|
| MATERIAL | Polyvinylchloride (PVC) |
| Colour | Grey (GY) |
| Length (L) | 2 m |
| Operating Temperature | -5 °C to +65 °C |
| Flammability | UL 94 V0 |



Punching acc. DIN EN 50085 wiring ducts HTWD-PN

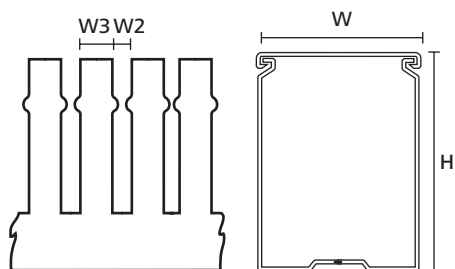


Please note! Not all products listed on this page may have this approval. Please check our website for latest approvals.



Rigid PVC Wiring Ducts

HelaDuct HTWD-PN for small-diameter wires



Wiring duct HTWD-PN

| TYPE | Width (W) | Height (H) | Width (W2) | Width (W3) | Pack Cont. | Article-No. |
|-----------------|-----------|------------|------------|------------|------------|-------------|
| HTWD-PN-25X40 | 25 | 40 | 4 | 6 | 72 m | 184-10068 |
| HTWD-PN-25X60 | 25 | 60 | 4 | 6 | 48 m | 184-10138 |
| HTWD-PN-25X80 | 25 | 80 | 4 | 6 | 48 m | 184-10198 |
| HTWD-PN-40X40 | 40 | 40 | 4 | 6 | 40 m | 184-10078 |
| HTWD-PN-40X60 | 40 | 60 | 4 | 6 | 36 m | 184-10148 |
| HTWD-PN-40X80 | 40 | 80 | 4 | 6 | 32 m | 184-10208 |
| HTWD-PN-40X100 | 40 | 100 | 4 | 6 | 16 m | 184-10258 |
| HTWD-PN-60X40 | 60 | 40 | 4 | 6 | 24 m | 184-10088 |
| HTWD-PN-60X60 | 60 | 60 | 4 | 6 | 24 m | 184-10158 |
| HTWD-PN-60X80 | 60 | 80 | 4 | 6 | 24 m | 184-10218 |
| HTWD-PN-60X100 | 60 | 100 | 4 | 6 | 8 m | 184-10268 |
| HTWD-PN-80X40 | 80 | 40 | 4 | 6 | 24 m | 184-10098 |
| HTWD-PN-80X60 | 80 | 60 | 4 | 6 | 24 m | 184-10168 |
| HTWD-PN-80X80 | 80 | 80 | 4 | 6 | 24 m | 184-10228 |
| HTWD-PN-80X100 | 80 | 100 | 4 | 6 | 8 m | 184-10329 |
| HTWD-PN-100X40 | 100 | 40 | 4 | 6 | 16 m | 184-10108 |
| HTWD-PN-100X60 | 100 | 60 | 4 | 6 | 16 m | 184-10178 |
| HTWD-PN-100X80 | 100 | 80 | 4 | 6 | 16 m | 184-10238 |
| HTWD-PN-100X100 | 100 | 100 | 4 | 6 | 8 m | 184-10278 |
| HTWD-PN-120X60 | 120 | 60 | 4 | 6 | 16 m | 184-10188 |
| HTWD-PN-120X80 | 120 | 80 | 4 | 6 | 16 m | 184-10248 |

All dimensions in mm. Subject to technical changes.
Minimum Order Quantity (MOQ) may differ from package content.