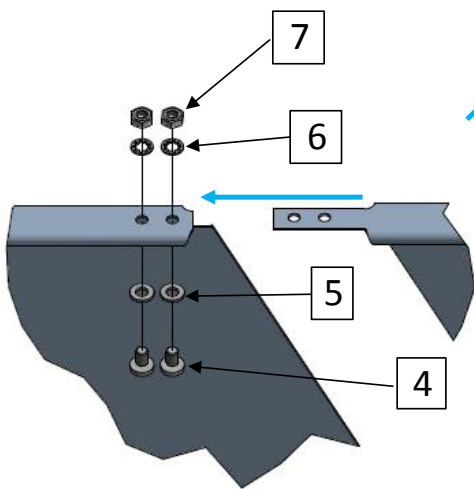
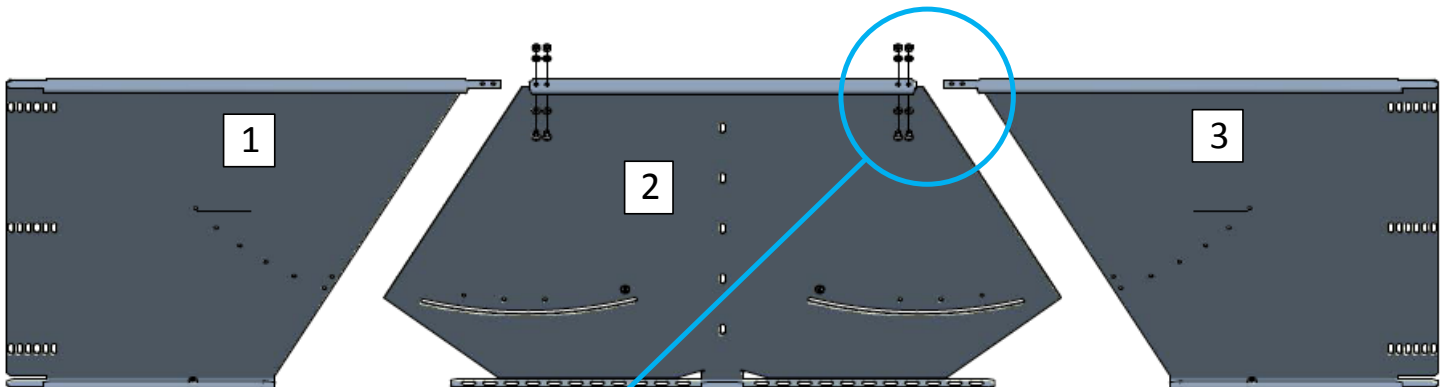
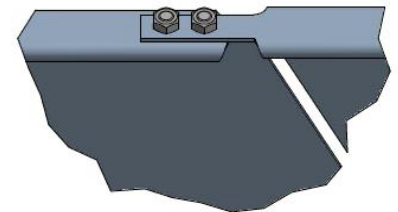


## TUMAB600 ASSEMBLY INSTRUCTIONS

Step By Step



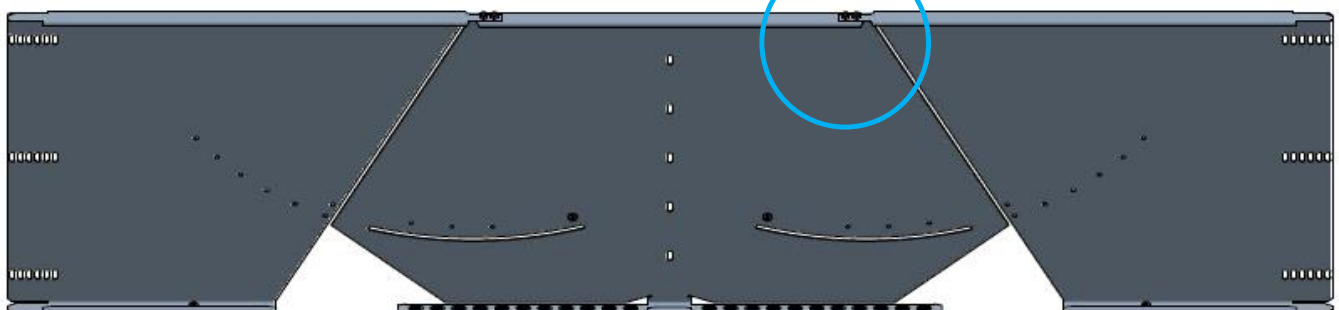
2) Insert screws into star washers and nuts then tighten. Repeat process for other side.



1) Slide parts together until holes line up.  
Place tab at the back.  
Insert screws into washers then through the holes.

### BOM:

1) TUMAB600-1	QTY - 1
2) TUMAB600-2	QTY - 1
3) TUMAB600-3	QTY - 1
4) M6 PANHEAD	QTY - 8
5) M6 WASHER	QTY - 8
6) M6 STAR WASHER	QTY - 8
7) M6 NUT	QTY - 8



FULLY ASSEMBLED



Safety gloves must be worn

UNISTRUT HEALTH & SAFETY DATA SHEET REF'S :

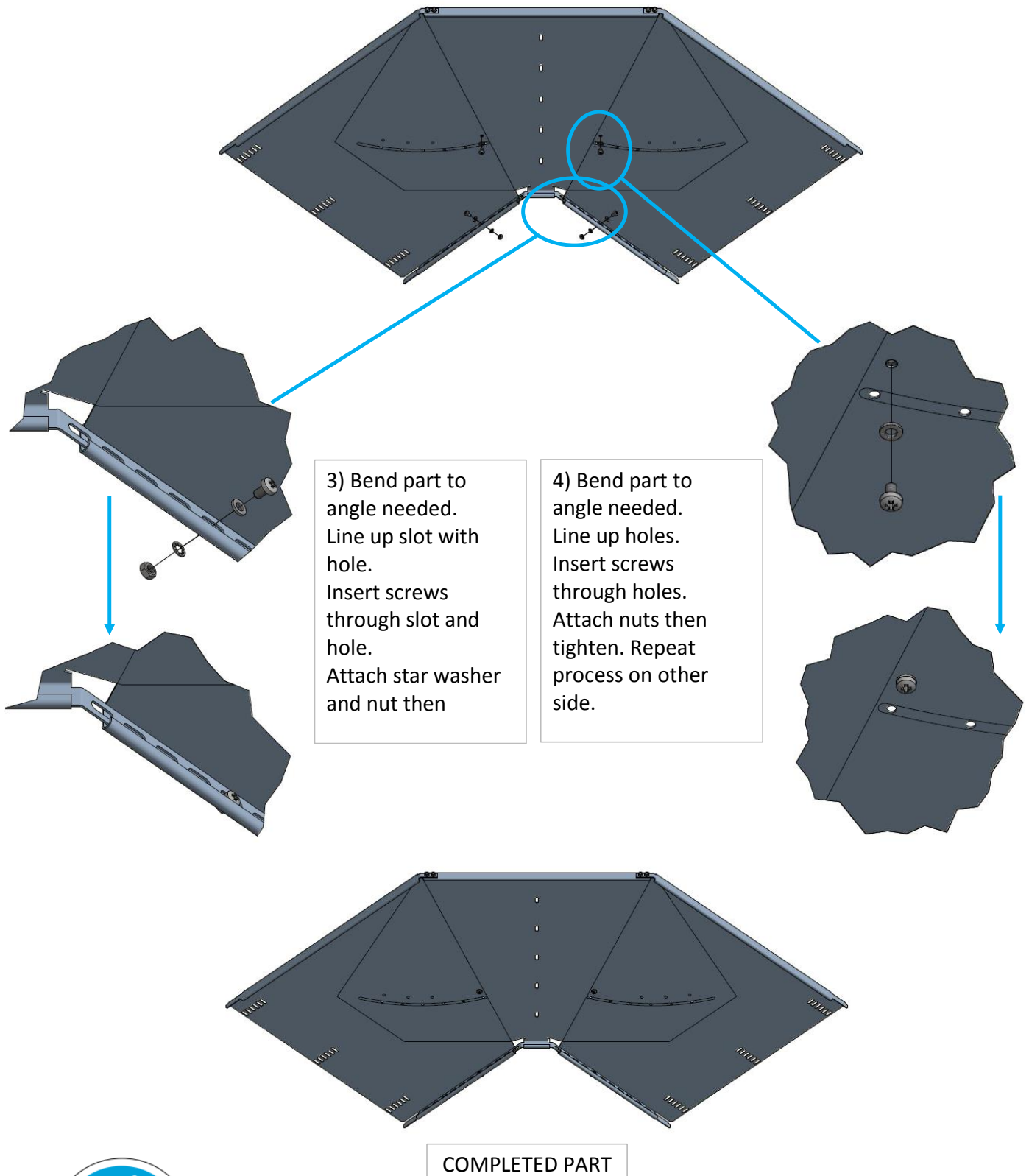
No. 001 - PLAIN STEEL, PRE-GALVANIZED, GALVANIZED AND STAINLESS STEEL COMPONENTS

No. 099 - HOT DIP GALVANIZING (CHANNEL & COMPONENTS)

No. 102 - STEEL

## TUMAB600 ASSEMBLY INSTRUCTIONS

Step By Step



Safety gloves must be worn

UNISTRUT HEALTH & SAFETY DATA SHEET REF'S :

No. 001 - PLAIN STEEL, PRE-GALVANIZED, GALVANIZED AND STAINLESS STEEL COMPONENTS

No. 099 - HOT DIP GALVANIZING (CHANNEL & COMPONENTS)

No. 102 - STEEL