

# COPPER TERMINALS

## COPPER TERMINALS

Kompress copper tube terminals (prefix CT) are manufactured from precision drawn tubes to BS 2871, they are designed and manufactured to meet performance requirements of BS 4579 Part 1 and are supplied in accordance with our ISO 9001 Accredited Certification



## BELL MOUTH CABLE ENTRY

All standard types in the range between 6mm<sup>2</sup> - 800mm<sup>2</sup> have bell mouths to ensure easy entry for even flexible conductors.

## COPPER SPLICES

Kompress copper tube splices (prefix CS) are manufactured from the same materials and to the same standards as COPPER TERMINALS.

## FINISH

Copper terminals and splices are supplied plated as standard to BS 1872 Part 2 for corrosion resistance and attractive appearance.

However, if plain untinned pieces are required please consult the Kompress Sales Office.

## TEMPERATURE RATING

The standard electro tinned parts are suitable for use up to temperatures of 150°C. Should a higher temperature capability be required please consult the Kompress Sales Office.

## HOW TO SPECIFY

The Kompress part numbering system has been carefully devised to help the specifier understand and recognise each element of the code.

The simple part numbering system makes specifying easy without constant reference to the catalogue.

This is how the part number is created-

eg CT 185 - 16

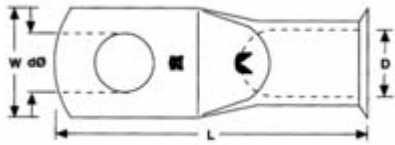
=

**CT** (Copper Terminal). **185** (Conductor size mm<sup>2</sup>). **16** (Stud size mm).

# COPPER TERMINALS



## COPPER TUBE TERMINALS AND SPLICES

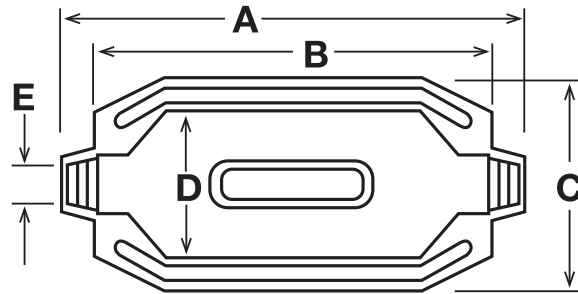


PART NO.	CONDUCTOR SIZE mm <sup>2</sup>	STUD mm	LENGTH L	WIDTH W	INSIDE DIAMETER D	HOLE DIAMETER dØ	PACK SIZE	RECOMMENDED TOOLING
CT1.5-3	1.5	3	16.0	6.5	1.8	3.2	} 100 {	KT2    KT13
CT1.5-4	1.5	4	17.0	6.5	1.8	4.3		
CT1.5-5	1.5	5	18.0	7.5	1.8	5.3		
CS1.5	1.5	-	14.0	-	1.8	-		
CT2.5-3	2.5	3	16.0	7.5	2.3	3.2	} 100 {	KT2    KT13
CT2.5-4	2.5	4	17.0	7.5	2.3	4.3		
CT2.5-5	2.5	5	18.0	8.5	2.3	5.3		
CT2.5-6	2.5	6	19.0	9.0	2.3	6.5		
CS2.5	2.5	-	16.0	-	2.3	-		
CT4-4	4.0	4	21.0	8.5	3.0	4.3	} 100 {	KT2    KT13
CT4-5	4.0	5	22.0	9.0	3.0	5.3		
CT4-6	4.0	6	23.0	10.0	3.0	6.5		
CS4	4.0	-	19.0	-	3.0	-		
CT6-4	6.0	4	24.6	9.6	4.0	4.3	} 100 {	KT2    KT13
CT6-5	6.0	5	24.6	9.7	4.0	5.3		
CT6-6	6.0	6	24.6	10.0	4.0	6.3		
CT6-8	6.0	8	27.3	12.5	4.0	8.3		
CT6-10	6.0	10	30.7	14.7	4.0	10.3		
CT6-BL	6.0	-	30.7	12.5	4.0	-		
CS6	6.0	-	19.0	-	4.0	-		
CT10-5	10	5	30.0	10.4	4.5	5.1	} 100 {	KT17    KT24 KT23    KFH13C KT25    KFH23H KHH13C
CT10-6	10	6	30.0	10.5	4.5	6.3		
CT10-8	10	8	30.0	12.5	4.5	8.2		
CT10-10	10	10	34.1	14.7	4.5	10.4		
CT10-12	10	12	34.1	17.5	4.5	12.7		
CT10-BL	10	-	34.1	12.5	4.5	-		
CS10	10	-	23.0	-	4.5	-		
CT16-5	16	5	30.7	11.0	5.5	5.2		
CT16-6	16	6	30.7	11.0	5.5	6.3		
CT16-8	16	8	30.7	12.5	5.5	8.3		
CT16-10	16	10	35.9	15.1	5.5	10.3		
CT16-12	16	12	35.9	17.5	5.5	12.8		
CT16-BL	16	-	35.9	12.5	5.5	-		
CS16	16	-	27.0	-	5.5	-		
CT25-5	25	5	32.2	13.1	6.7	5.2	} 100 {	KT24    KT23 KFH13C    KT25 KFH23C    KHH13C
CT25-6	25	6	32.2	13.1	6.7	6.3		
CT25-8	25	8	32.2	13.1	6.7	8.3		
CT25-10	25	10	36.9	15.1	6.7	10.2		
CT25-12	25	12	36.9	17.5	6.7	12.8		
CT25-BL	25	-	36.9	13.1	6.7	-		
CS25	25	-	31.0	-	6.7	-		

All dimensions in mm

# CABLE JOINTING KITS

## STRAIGHT JOINT SERIES KSJ



PART NO.	CABLE AREA UP TO MAX MM <sup>2</sup>	CABLE DIAMETER E		OVERALL DIMENSIONS		EFFECTIVE WORK SPACE	
		MIN	MAX	A	C	B	D
		mm	mm	mm	mm	mm	mm
KSJ6	6 x 4	10	20	215	100	165	48
KSJ16	16 x 4	15	26	230	110	180	56
KSJ35	35 x 4	20	30	280	130	230	73
KSJ70	70 x 4	30	40	395	165	335	105
KSJ120	120 x 4	40	50	530	180	470	120
KSJ185	185 x 4	50	60	590	195	530	135
KSJ300	300 x 4	60	70	885	220	825	160
KSJ500	500 x 4	70	90	965	250	885	190

### JOINT SELECTION FOR COPPER CONDUCTORS

Conductor Area mm <sup>2</sup>	Core Selection		
	4 Core	3 Core	2 Core
1.5	KSJ6	KSJ6	KSJ6
2.5	KSJ6	KSJ6	KSJ6
4.0	KSJ6	KSJ6	KSJ6
6.0	KSJ6	KSJ6	KSJ6
10	KSJ16	KSJ16	KSJ16
16	KSJ16	KSJ16	KSJ16
25	KSJ35	KSJ16	KSJ16
35	KSJ35	KSJ35	KSJ16
50	KSJ70	KSJ35	KSJ16
70	KSJ70	KSJ70	KSJ35
95	KSJ120	KSJ70	KSJ70
120	KSJ120	KSJ120	KSJ70
150	KSJ185	KSJ120	KSJ70
185	KSJ185	KSJ185	KSJ120
240	KSJ300	KSJ185	KSJ120
300	KSJ300	KSJ300	KSJ120
400	KSJ500	-	-
500	KSJ500	-	-

### CONNECTOR SELECTION FOR COPPER CONDUCTORS

Conductor Area mm <sup>2</sup>	Connector Selection	
	Mechanical Connector	Compression Connector
1.5		CS1.5
2.5		CS2.5
4.0		CS4
6.0		CS6
10		CS10
16		CS16
25		CS25
35		CS35
50	KUST95	CS50
70	KUST95	CS70
95	KUST95	CS95
120	KUST185	CS120
150	KUST185	CS150
185	KUST185	CS185
240	KUST300	CS240
300	KUST300	CS300
400	CONSULT KOMPRESS	CS400
500	CONSULT KOMPRESS	CS500

This chart is based upon normal colour to colour jointing without crossed cores. If crossed cores are required it is usually necessary to use the next larger size joint kit.  
 For normal multicore or other applications including solid or stranded aluminium conductors consult KOMPRESS.