

Floor Standing Enclosures

Steel Range

Accessories | Cabling

Outside cable fixing bars, CABP

- Description:

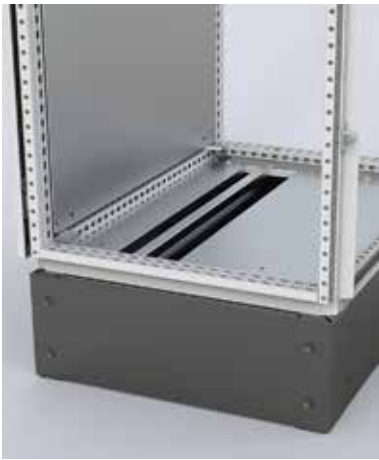
Suspended below the bottom plates, thereby maximizing the full usable space in the enclosure. Holds standard cable clamps CAC to secure incoming cables. Fully adjustable in depth. When EMC shielded earthing cables are connected to the support bar the Faraday effect will be kept intact for maximum EMI shielding.
- Material:

2 mm zinc plated steel.
- Pack quantity:

2 bars with mounting accessories. For 1200 mm wide, 4 bars with mounting accessories.
- Mounting requirements:

Add CAC clamps depending on diameter of cable.

For enclosure	
W	Item no.
400	CABP400
500	CABP500
600	CABP600
800	CABP800
1000	CABP1000
1200	CABP1200



Cable clamps, CAC

- Description:

To secure incoming cables onto the fixing bars CAB and CABP. Holds the cable in position and supports the weight.
- Material:

Zinc plated steel.
- Pack quantity:

25 clamps.
- Mounting requirements:

Add CAB/CABP to mount the cable clamps CAC.

Size	Item no.
06-12 mm	CAC0612
10-14 mm	CAC1014
12-16 mm	CAC1216
14-18 mm	CAC1418
18-22 mm	CAC1822
22-26 mm	CAC2226
26-30 mm	CAC2630
30-34 mm	CAC3034
34-38 mm	CAC3438
38-42 mm	CAC3842
42-46 mm	CAC4246
56-64 mm	CAC5664



Split bottom plates stainless steel, CBPS

- Description:

Fitted in place of the standard one piece bottom plate, allows direct cable entry. To achieve perfect sealing around the cables use the gasket kit BG01.
- Material:

AISI 304 / AISI 316L pre-grained stainless steel.
- Bottom plates:

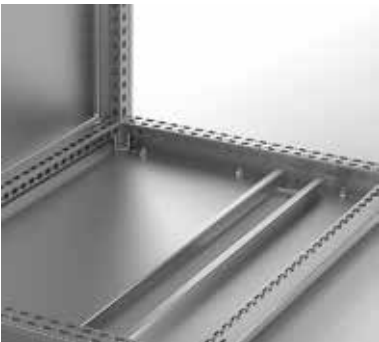
1.5 mm.
- Finish:

400 pre-grained stainless steel.
- Pack quantity:

1 kit of two part bottom plate.

For enclosure		
W	D	Item no.
600	400	CBPS0640
600	400	CBPS0640-316
600	500	CBPS0650
600	500	CBPS0650-316
600	600	CBPS0660
600	600	CBPS0660-316
800	400	CBPS0840
800	400	CBPS0840-316
800	500	CBPS0850
800	500	CBPS0850-316
800	600	CBPS0860
800	600	CBPS0860-316
1000	400	CBPS1040
1000	400	CBPS1040-316
1000	500	CBPS1050
1000	500	CBPS1050-316
1000	600	CBPS1060
1000	600	CBPS1060-316

For enclosures 1200 mm & 1600 mm wide use 2 x 600 mm & 2 x 800 mm wide bottom plates.



Raised side doors, DNSR

- Description:

A 200 mm wide cover with cable entrances in top and bottom. Supplied with one gland plate and gasket. Hole pattern equals enclosure's frame to mount cable fixing bars.
- Material:

2 mm.
- Finish:

RAL 7035 structured powder coating.
- Protection:

IP 33 | TYPE 1 in combination with MM connector plate and gasket SPDG01. Door frame optional.
- Mounting requirements:

Add a separation plate SPD or marshalling plate MM to mount connectors and separate the side compartment.
- Pack quantity:

1 piece with mounting accessories.

For enclosure		
H	D	Item no.
2000	500	DNSR2005R5
2000	600	DNSR2006R5

