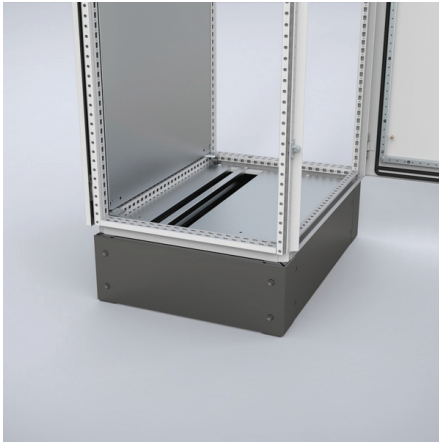


CABP400

OUTSIDE CABLE FIXING BAR



Item no.	CABP400
W	400
Item no.	CABP400

Description: Suspended below the bottom plates, thereby maximizing the full usable space in the enclosure. Holds standard cable clamps CAC to secure incoming cables. Fully adjustable in depth. When EMC shielded earthing cables are connected to the support bar the Faraday effect will be kept intact for maximum EMI shielding.

Material: 2 mm zinc plated steel.

Pack quantity: 2 bars with mounting accessories. For 1200 mm wide, 4 bars with mounting accessories.

Mounting requirement: Add CAC clamps depending on diameter of cable.