

MASTER LEDtube InstantFit HF



MASTER LEDtube HF 1200mm HO 14W840 T8

The Philips MASTER LEDtube integrates a LED light source into a traditional fluorescent form factor. Its unique design creates a perfectly uniform visual appearance which cannot be distinguished from traditional fluorescent. This product is the ideal solution for up lighting in general lighting applications.

Warnings and Safety

- NOTES: The overall energy efficiency and light distribution of any installation that uses these lamps are determined by the design of the installation.

Product data

General Information	
Cap base	G13 ROT (Rotating) [Medium Bi-Pin Fluorescent]
EU RoHS compliant	Yes
Nominal lifetime (nom.)	60000 h
Switching cycle	50,000X Sphere
Light Technical	
Colour Code	840 [CCT of 4,000 K]
Beam Angle (Nom)	160 °
Luminous flux (nom.)	2100 lm
Colour designation	Cool White (CW)
Correlated Colour Temperature (Nom)	4000 K
Luminous efficacy (rated) (nom.)	150.00 lm/W
Colour consistency	<6
Colour rendering index (nom.)	83

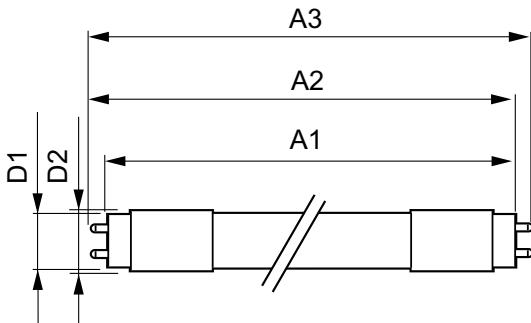
LLMF at end of nominal lifetime (nom.) 70 %	
Operating and Electrical	
Input frequency	20000-75000 Hz
Power (Rated) (Nom)	14 W
Lamp current (max.)	750 mA
Lamp current (min.)	300 mA
Starting time (nom.)	0.5 s
Warm-up time to 60% light (nom.)	0.5 s
Power factor (nom.)	0.9
Voltage (Nom)	30-80 V
Temperature	
T-ambient (max.)	45 °C
T-ambient (min.)	-20 °C
T storage (max.)	65 °C
T storage (min.)	-40 °C

MASTER LEDtube InstantFit HF

T-Case maximum (nom.)	55 °C
Controls and Dimming	
Dimmable	No
Mechanical and Housing	
Bulb material	Plastic
Product length	1200 mm
Bulb shape	Tube, double-ended
Approval and Application	
Energy Efficiency Class	D
Energy-saving product	Yes
Approval marks	RoHS compliance CE marking KEMA Keur certificate

Energy consumption kWh/1,000 hours	14 kWh
	387367
Product Data	
Full product code	871869668748200
Order product name	MASTER LEDtube HF 1200mm HO 14W840 T8
EAN/UPC – product	8718696687482
Order code	68748200
SAP numerator – quantity per pack	1
Numerator – packs per outer box	10
SAP material	929001284102
SAP net weight (piece)	0.360 kg

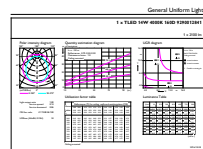
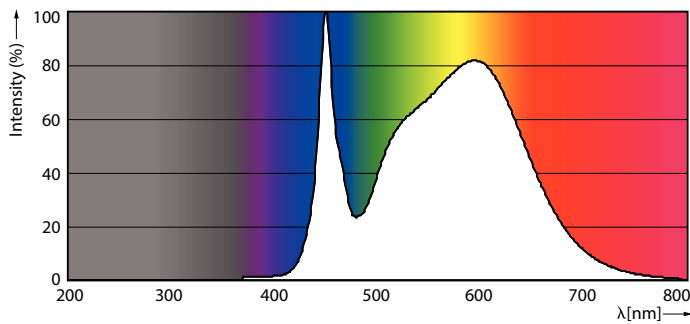
Dimensional drawing



MAS LEDtube HF 1200mm HO 14W840 T8

Product	D1	D2	A1	A2	A3
MASTER LEDtube HF 1200mm HO 14W840 T8	25.6 mm	28 mm	1198.1 mm	1205.2 mm	1212.3 mm

Photometric data

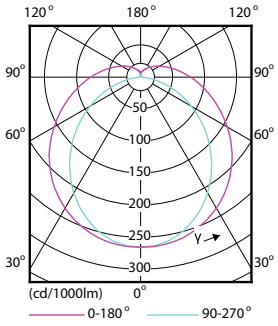


MAS LEDtube HF 1200mm HO 14W840 T8

MAS LEDtube HF 1200mm HO 14W840 T8

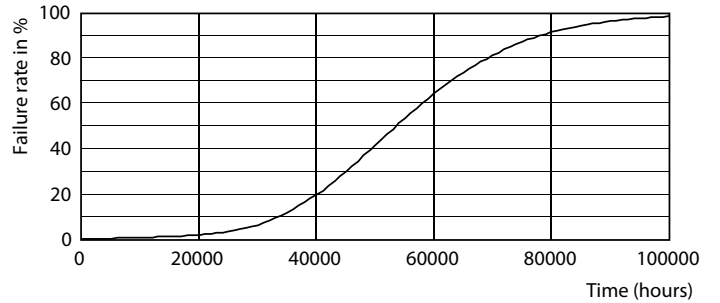
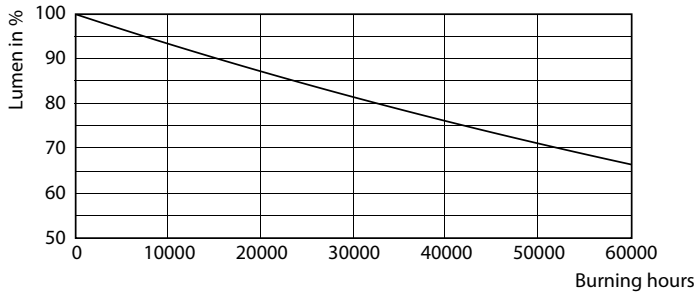
MASTER LEDtube InstantFit HF

Photometric data



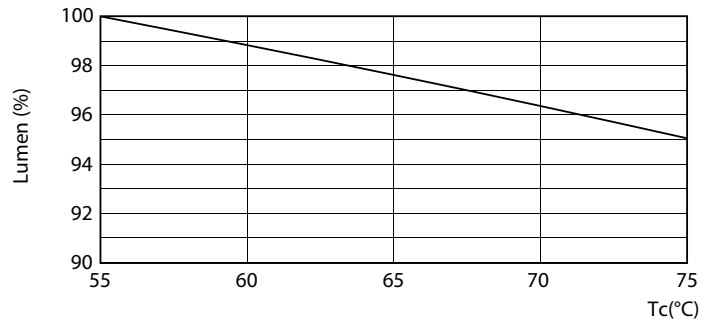
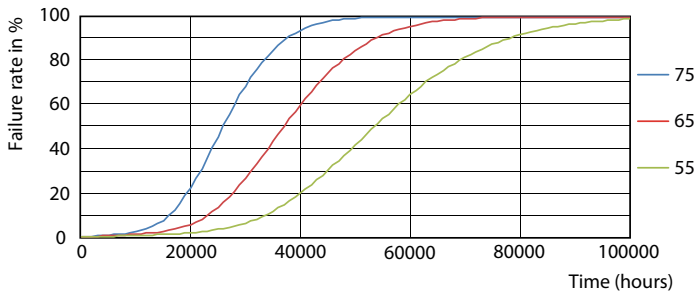
LEDtube HF 1200mm 1500mm UO T8

Lifetime



LEDtube HF 1500mm 26W G5 T5

LEDtube HF 1200mm 1500mm UO T8

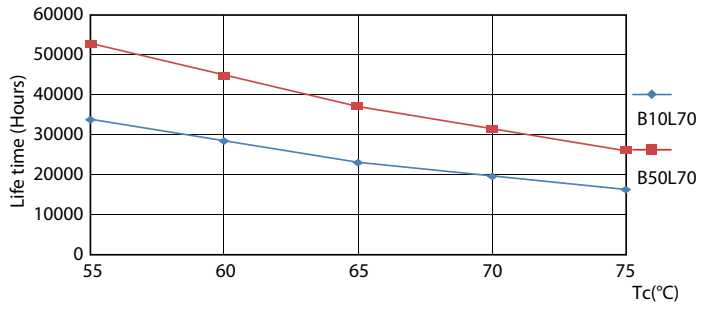


LEDtube HF HO-UO 14-24W G13 830-865 T8

LEDtube HF 1200mm HO-UO 14-16W G13 830-865 T8

MASTER LEDtube InstantFit HF

Lifetime



LEDtube HF HO-UO 14-24W G13 830-865 T8

