






Protection

Circuit protection

Earth leakage protection

Accessories for iC120, DPN, DPN Vigi, C60H-DC, SW60-DC, C60NA-DC, C60PV-DC, iSW devices (cont.)

Safety							
Accessories	Screw shield		Terminal shield			Interpole barrier	Spacer
	<div>066870_SE-33</div> <div></div> <div>PB124114</div> <div></div> <div>066889_SE-38</div> <div></div> <div>DB123898</div> <div></div> <div>PB104483-35</div> <div></div>						
Function	Prevents all contact with the fixing screws <ul style="list-style-type: none">■ The degree of protection becomes IP40■ Sealable, max. diameter 1.2 mm■ Dividable		Prevents all contact with the terminals <ul style="list-style-type: none">■ Degree of protection becomes IP40■ Sealable, max. diameter 1.2 mm <div><div>■ 1P</div><div><div>■ 1P</div><div>■ 2P</div></div><div><div>■ 3P: 1 x 26975 + 1 x 26976</div><div>■ 4P: 2 x 26976</div></div></div>			Improves the insulation between the connections: cables, terminals, lugs, etc.	<ul style="list-style-type: none">■ Used to:<ul style="list-style-type: none">□ complete the rows□ separate the devices■ Width: 1 x 9 mm module■ Allows that 2 cables are routed from one row to another (above and below), up to 6 mm²
Cat. numbers	18527	26981	18526	26975	26976	27001	A9N27062
Set of	2 (4P dividable)		2 (for upstream/downstream terminal)			10	1
Suitable for the following devices:							
iC120	■	–	■	–	–	■	■
Vigi iC120	–	–	–	–	–	–	■
DPN, DPN Vigi	–	–	–	–	–	–	■
C60H-DC	–	■	–	■	■	■	■
SW60-DC, C60NA-DC, C60PV-DC	–	■	–	–	–	■	■
iSW	–	■ iSW 40 to 125 A	–	■ iSW 40 to 125 A	■ iSW 40 to 125 A	■ iSW 40 to 125 A	■

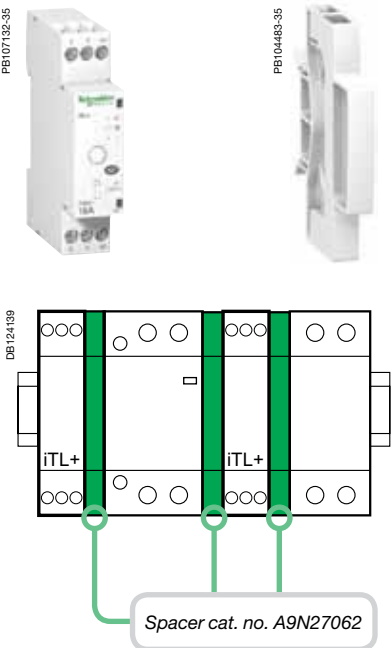
3

EN 60669-2-2

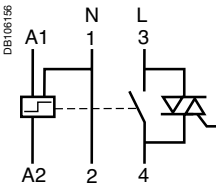
The iTL+ high-performance impulse relay allows remote control of single-phase circuits. It is designed for demanding applications.

The iTL+ high-performance impulse relay is used for push-button control of lighting circuits consisting of:

- incandescent lamps, low-voltage halogen lamps, etc. (resistive loads)
- fluorescent tubes, discharge lamps, etc. (inductive loads).



iTL+			
Type	Rating		Width in 9 mm modules
1P+N	16 A	A9C15032	2+1 ⁽¹⁾



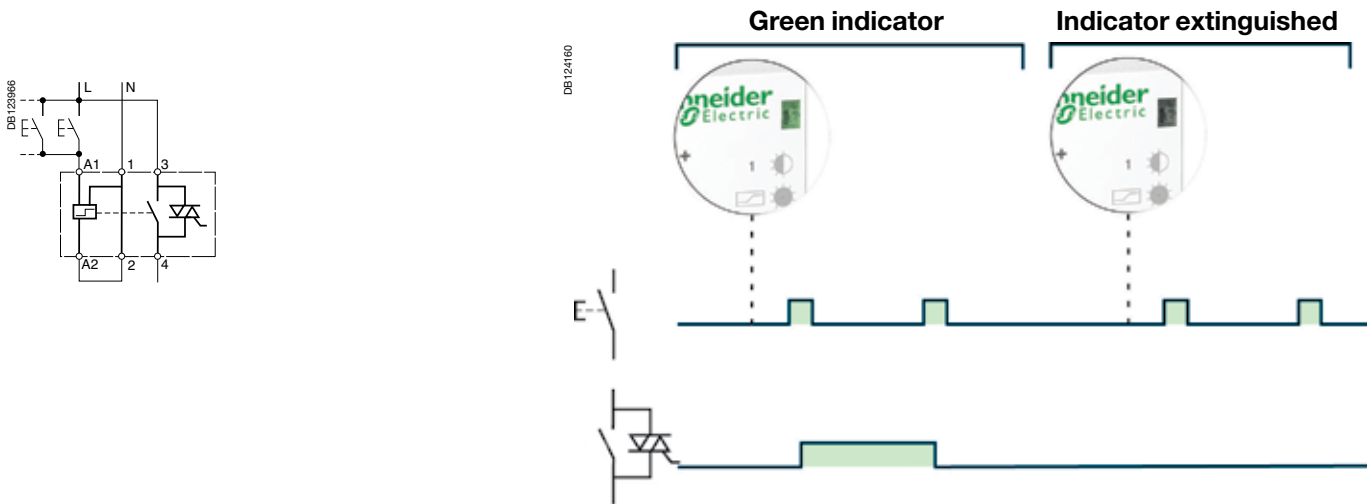
(1) Supplied with a 9 mm spacer (cat. no. A9N27062): to be used for mounting the iTL+ alongside a circuit breaker, contactor, impulse relay, etc., in order to maintain optimal operation.



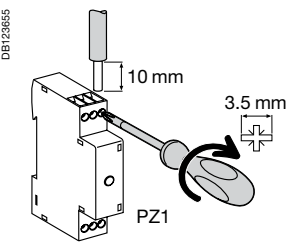
It is compulsory:

- to connect the neutral
- to keep the same control circuit connection "A1: phase", "A2: neutral"
- to use the same phase for connection of the power and control functions.

Operation



Connection



Type	Rating	Tightening torque	Copper cables	
			Rigid or flexible with ferrule	Rigid or flexible without ferrule
iTL+	16 A	1 N.m	<div>DB123656</div> 2 x 1.5 mm ²	<div>DB123657</div> 2 x 2.5 mm ² 1 x 4 mm ²