

Front

210mm

Rear

LUCECO

Installation & Operating Instructions EN

ECO DECORATIVE IP54 BULKHEAD

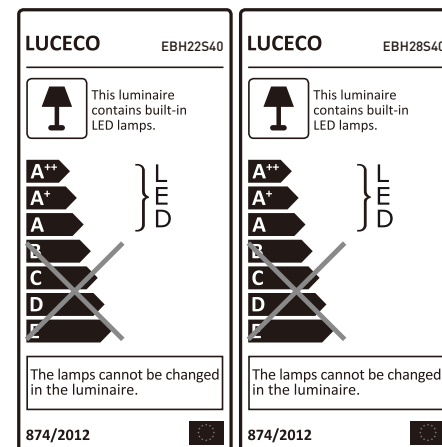
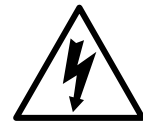
Ø220mm & Ø280mm

EBH22S40-02/EBH28S40-02

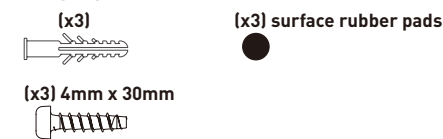


NOTE - To comply with regulations, installation must be carried out by suitably qualified competent person and in accordance with the current IEE Wiring Regulations (BS7671) and Building Regulations. A copy of the instructions must be left for the user/maintenance engineer for future reference.

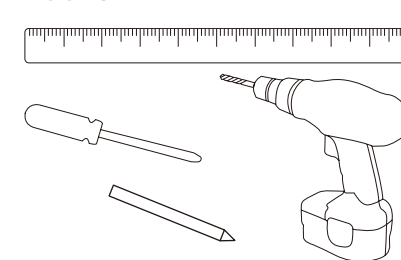
For non-UK, please refer/consult local requirements ENSURE ELECTRICAL SUPPLY IS DISCONNECTED/ ISOLATED BEFORE COMMENCING INSTALLATION



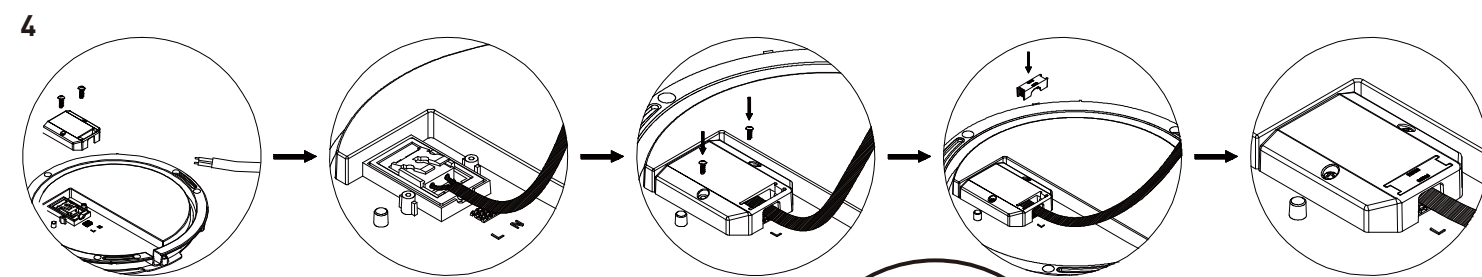
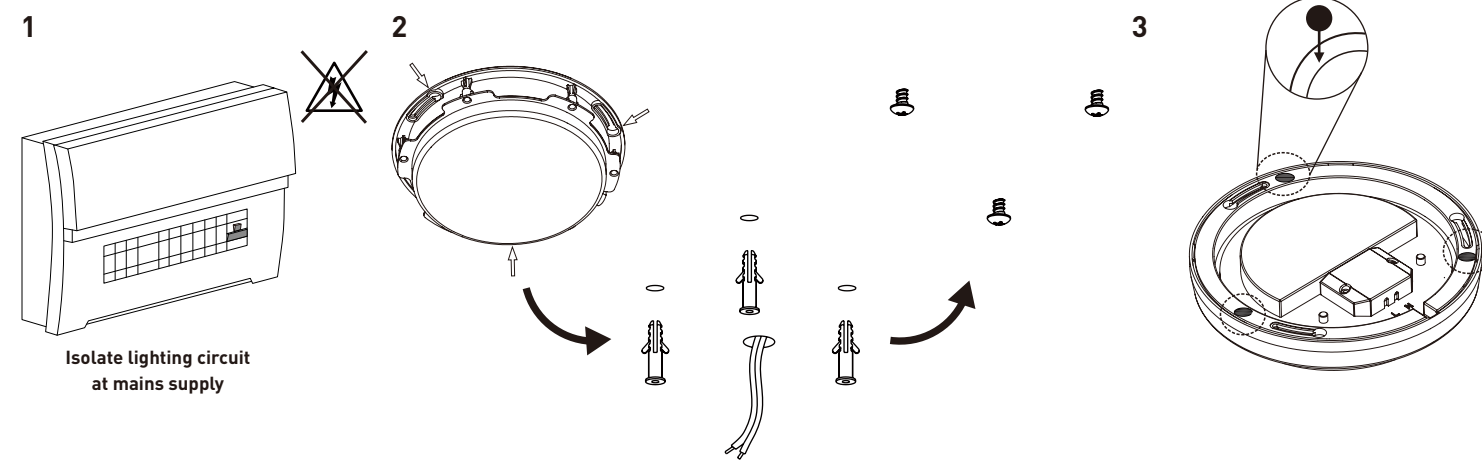
INCLUDED:



TOOLS NEEDED:



ASSEMBLY AND INSTALLATION



Suitable Cable: H05VVH2-U 2*1.0mm², H05VVH2-U 2*1.0+1mm², H05VVH2-U 2*1.5mm², H05VVH2-U 2*1.5+1mm²

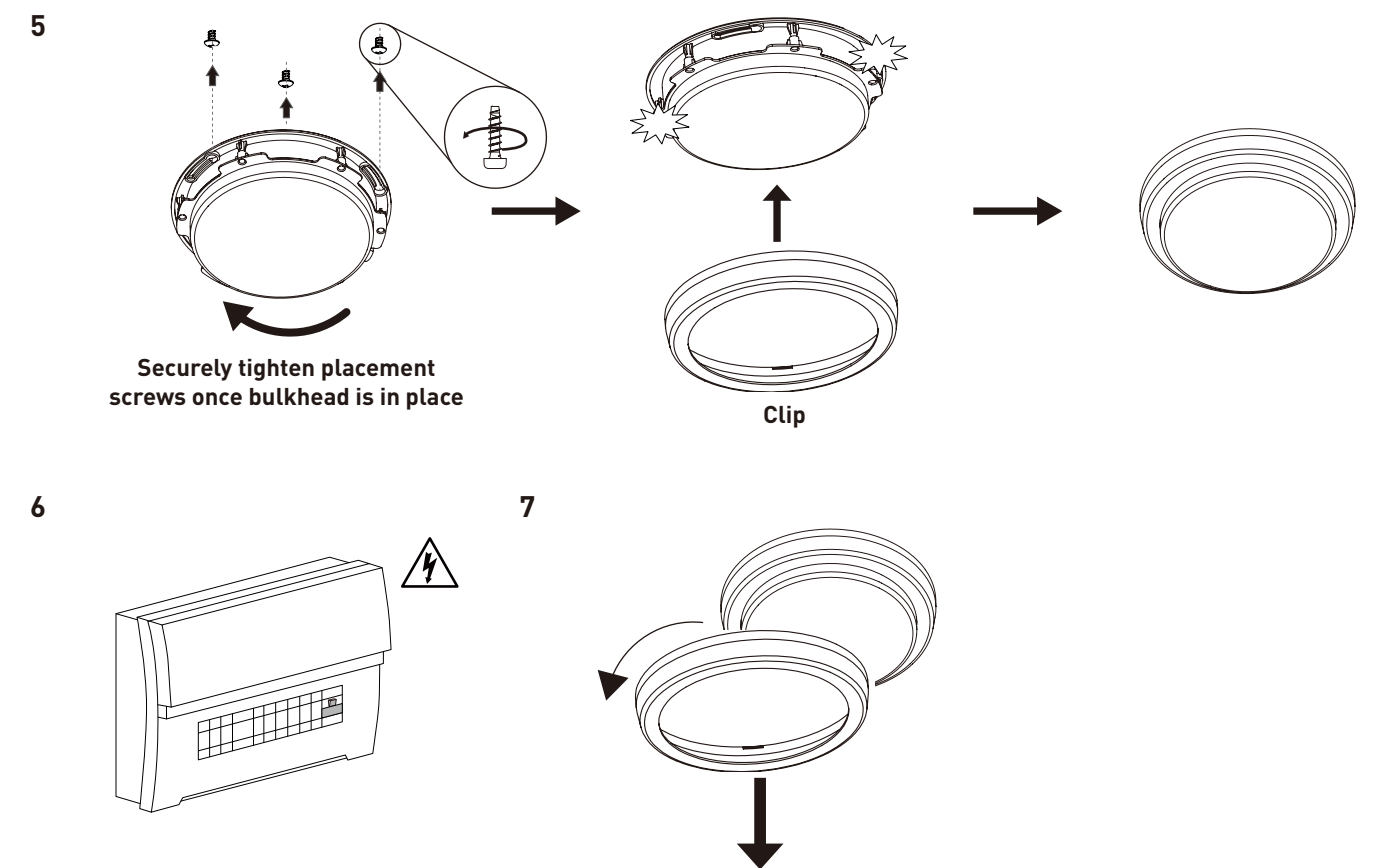
IMPORTANT: CABLES MUST FIT SECURELY TO TERMINAL BLOCK TO ENSURE WATERPROOF SEAL. ENSURE BLACK RUBBER GASKET REMAINS IN PLACE

www.luceco.com

EBH.JH.02.2017

LUCECO

Installation & Operating Instructions EN



Part Code	Colour Temp.	Voltage	Wattage	Lumens	Llm/W	Beam Angle	Dimmable	IP Rating	Dimensions
Eco Decorative IP54 Bulkheads									
EBH22S40-02	4000K	220-240VAC 50/60Hz	14W	1300Lm	93 Llm/W	120°	No	IP54	Ø220mm x 55mm
EBH28S40-02	4000K	220-240VAC 50/60Hz	17W	1650Lm	97 Llm/W	120°	No	IP54	Ø280mm x 55mm

United Kingdom Warranty

For other territories and for further information, please see www.luceco.com for details

Products are protected by warranty for a period of 3 years from date of purchase against defects in material and workmanship (unless otherwise stated). Should a product fail to perform as described within the warranty period it will be repaired or replaced with the same or equivalent product by Luceco, free of charge provided that you: (1) return the product to us with shipping charge prepaid, (2) provide us with proof of the original date of purchase and (3) quote our return authorization number. Repaired or replaced products will be returned to you with shipping charges prepaid. Replacement products may be refurbished or contain refurbished materials. If in our sole discretion, we are unable to repair or replace a defective product, we will refund the purchase price of the product. This warranty will not apply if in our judgment, the product fails due to damage in shipment, handling, storage, accident, abuse or misuse, or if it has been used in a manner not conforming to our product instructions, has been modified in any way, or has any serial number removed or defaced. Repair or attempted repair will void this warranty. Our maximum liability under the terms of this warranty is limited to the purchase price of the product covered by the warranty. The warranty is given under English Law. If any part of this warranty is deemed unenforceable (including any provision in which we exclude our liability to you) the enforceability of any other parts of the warranty will not be affected. These terms do not reduce your statutory rights. For Non-UK please contact Local Luceco Office for details. THESE TERMS AND CONDITIONS ARE SUBJECT TO CHANGE WITHOUT PRIOR NOTICE.

Eventually, you may want to replace this fitting;

Environmental Protection W.E.E.E (Wheellie Bin Symbol) for EU ONLY

This symbol is known as the "crossed-out" wheellie Bin Symbol. When this symbol is marked on a product or battery, it means that it should not be disposed of with your general household waste. Some chemicals contained within electrical/electronic products or batteries can be harmful to health and the environment. Only dispose of electrical/electronic/battery items in separate collection schemes, which cater for the recovery and recycling of materials contained within. Your co-operation is vital to ensure the success of these schemes and for the protection of the environment.

Tech Help Line	Kontakt	Support Technique	Servicio de asistencia telefónica	Assistenza tecnica telefonica
UK - 0330 0249 279 Non UK - +44 (0)1952 238 100 Supplied by LUCECO Stafford Park 1, Telford, Shropshire, ENGLAND, TF3 3BD	UK - 0330 0249 279 Non UK - +49 40 89066 878 - 29 Geliefert von Luceco GmbH Holstenplatz 20b, 22765 Hamburg DEUTSCHLAND	UK - 0330 0249 279 Non UK - +33 (0)1 61 10 10 35 Notice fournie par Luceco SAS France & Belux 3 Rue de Courtaïn, Magny Le Hongre 77700 FRANCE & BELUX	UK - 0330 0249 279 Non UK - +34 93 576 83 21 Facilitado por BG Electrical Ltd Liessamins, 4, 08338, Premia de Dalt Barcelona, Spain	UK - 0330 0249 279 Non UK - +39 0434 1696795 Fornito da BG Electrical Ltd Nexus Italia, Via Amman 10 33170 Pordenone, Italy

Visit our website at www.luceco.com Besuchen Sie uns auf www.luceco.de Visitez notre site Web www.luceco.fr Visite nuestra web en www.luceco.com Visitate il nostro sito www.luceco.com

EBH.JH.02.2017

297mm