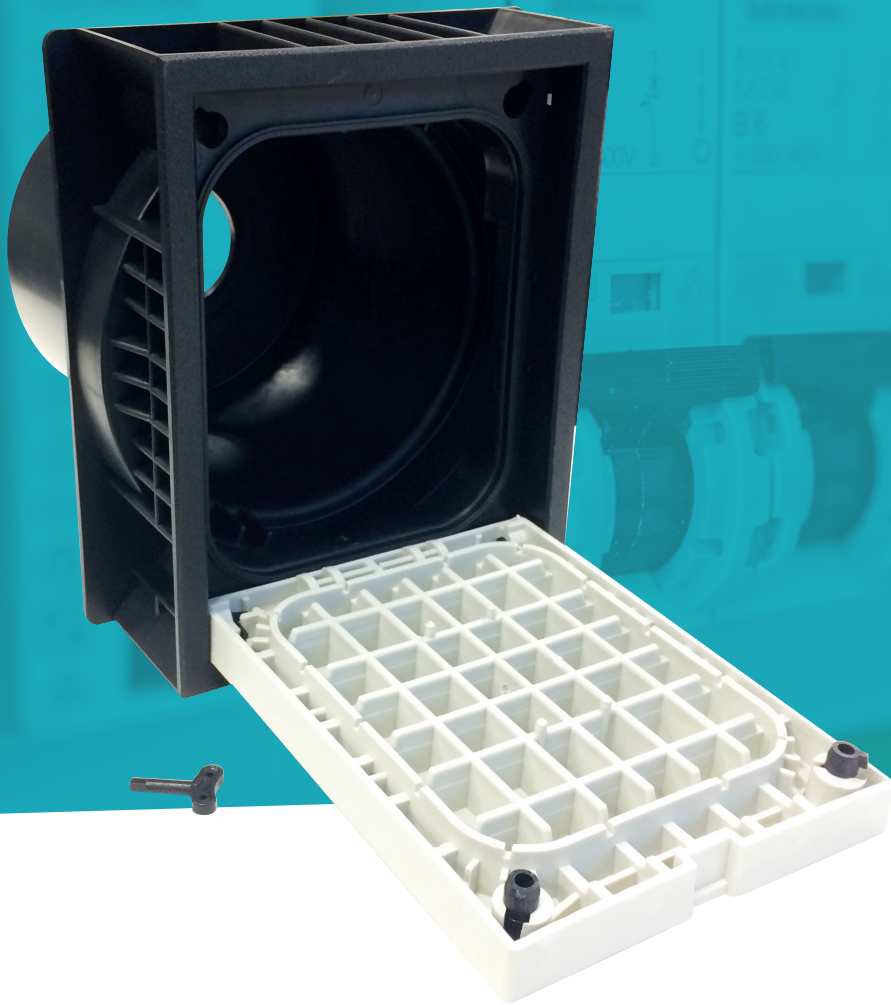


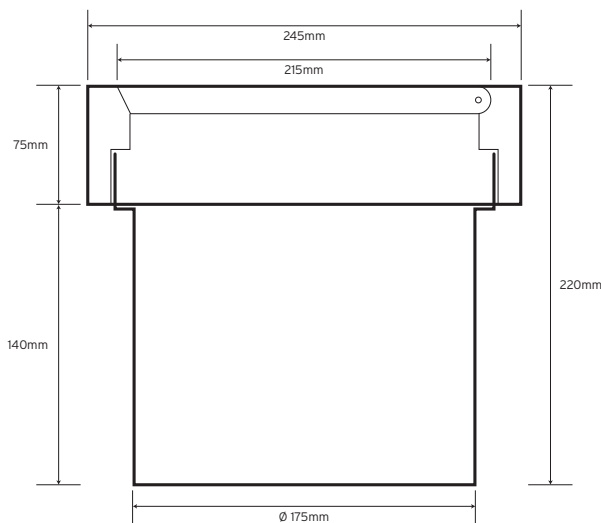
niGLON

Circuit Protection

EPT Lightweight Earth Pit



Technical Drawing



Technical Specifications

Weight	1.80kg
Load Rated	Up to 5,000kg
Material	High Performance Polymer
Lid Dimensions	245 x 220 x 215mm (L x W x D)
Pit Dimensions	Ø 175mm x 140mm

Features

- Lockable lid
- Large working area
- Lightweight
- UV stable and chemically resistant